



**MIRAGE**



**MIRAGE**  
LANGKAWI



Azimut 80 presents in beautiful condition and has been in the care of a full time crew of two since new. There is plenty of outdoor entertaining space with a large sun lounge and seating on the bow. On the flybridge there are two separate seating and dining tables served by a large wet bar and another two double sun loungers with storage below. Down in the well shaded cockpit there is another dining table with its own wet bar.

The upgraded and very powerful 1,800 horsepower MAN V12 engines can take the boat up to 31 knots. Stabiliser fins and full tropical air conditioning as well as twin 20 kilowatt generators add to the comfort.

# SPECIFICATIONS

## MAIN CHARACTERISTICS

Length	23.9 m
Beam	6.00 m
Draft	3.03 m
Hull	Fiberglass
Engines	2 x Man CR V12 Twin 1800 HP
Generators	3 x 200KW Caterpillar C9
Speeds	22 knots (cruising)
Range	4000 nautical miles
Fuel capacity	6,000 l
Water Maker	220 l/h
Water Capacity	3000 l

## ACCOMMODATION

Cabins	4 rooms
Guests	16-day trip / 8 overnight
Crew	2

## EQUIPMENT

Special features	Hydraulic swim platform Watermaker Joystick control
------------------	---

## CONSTRUCTION

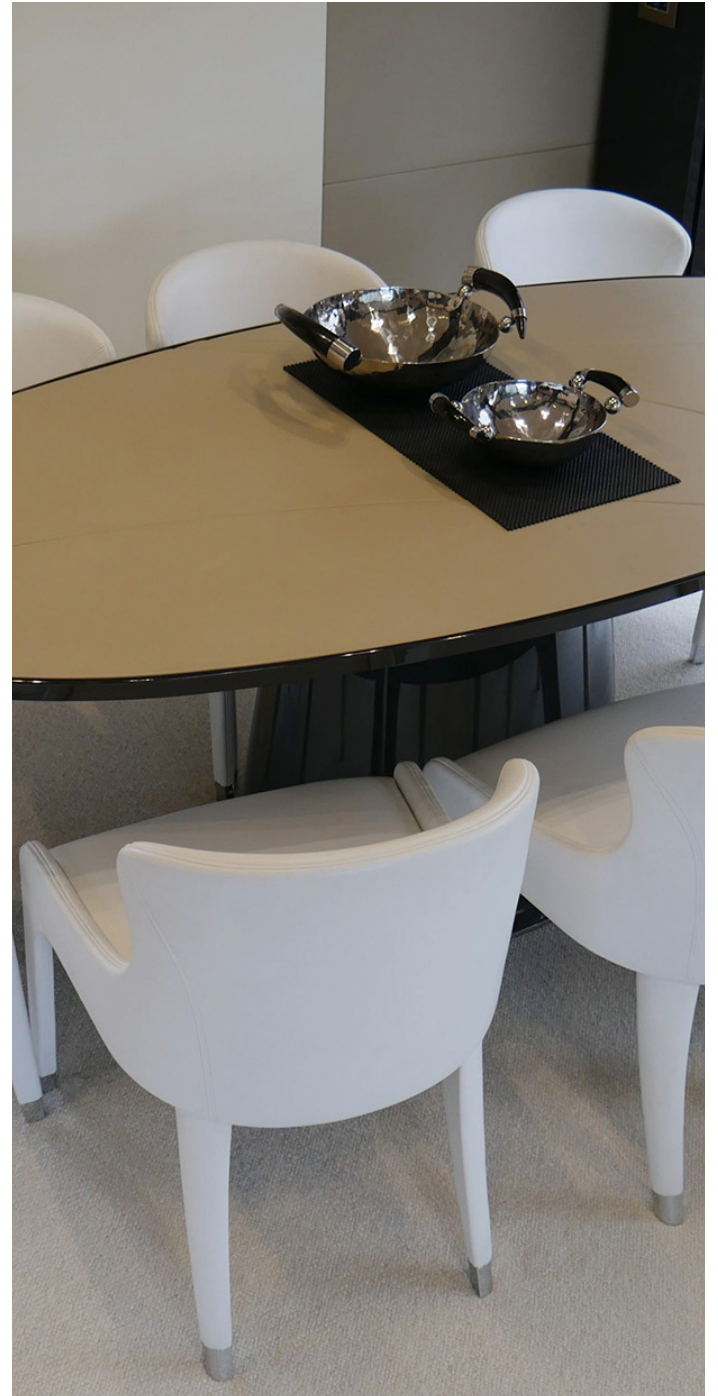
Built	2015
Builder	Azimut Shipyard
Interior designer	Salvagni Architetti
Flag	Malaysia





## INTERIOR

The sumptuous interior designed by Salvagni Architetti has a bright modern style and huge volume. The main deck is laid out with a lounge dining room, separate galley, day head and coffee corner opposite the helm station. Down below the accommodations feature a 4 cabin, 4 head layout with a double VIP forward, double guest cabin to port and a twin to starboard with the full beam owners cabin in the centre of the boat. The full beam head has dual access, two separate vanity units, a huge central rain shower with access from two sides, toilet, bidet and even a bathtub.





### **STATEROOMS**

1 Master room

Containing:

- Full Air conditioned
- 1 bed (200 cm x 200 cm)
- Bathroom
- WC

1 VIP room

Containing:

- Full Air conditioned
- 1 bed (180 cm x 200 cm)
- Bathroom
- WC

1 Double room

1 Twin room

### **RATES INCLUSION**

- Snorkeling mask
- Life Jacket
- Fuel surcharge
- National Park fee
- Travel insurance
- Satellite TV
- Fishing rods
- Around trip transfer (overnight only)
- Thai Lunch
- Thai Dinner (overnight only)
- Continental breakfast
- Seasonal fruits
- Water/Soft drinks, Coffee, Tea, Juices
- Snacks
- Towels

### **RATES EXCLUSION**

- Exclude alcohol (Wines and spirits list available)
- Massage therapist on demand

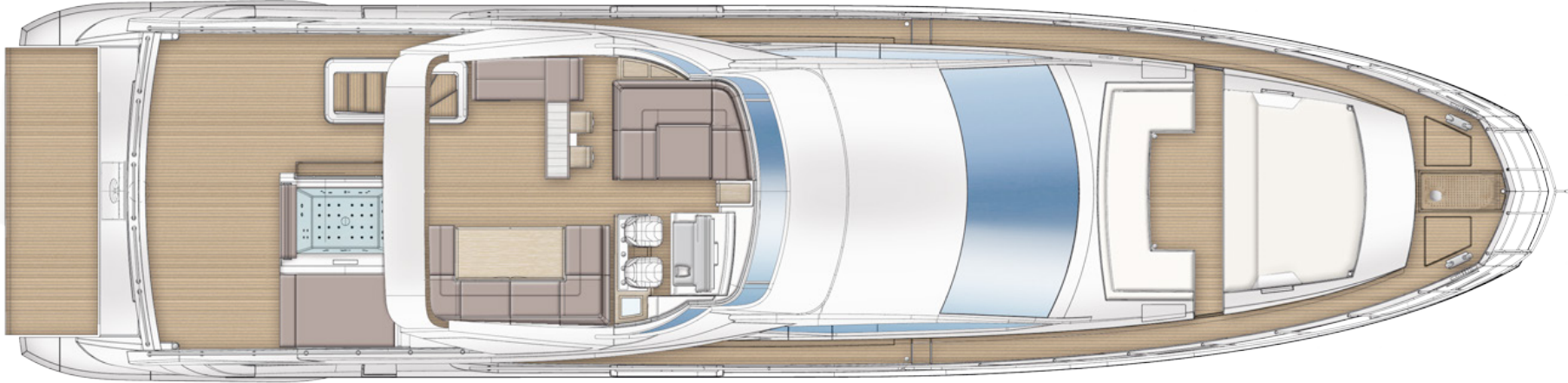




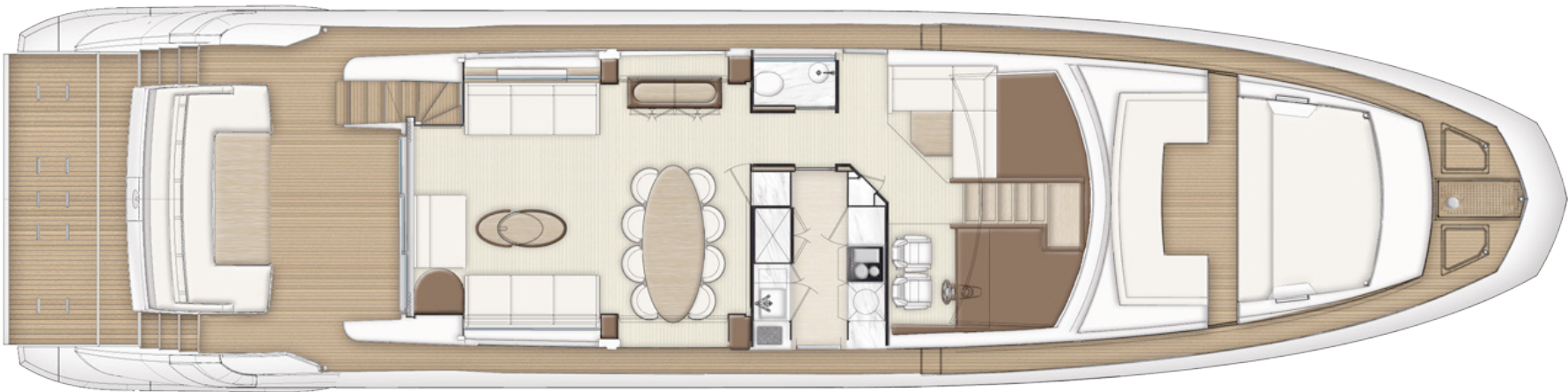


# DECK PLAN

## FLYBRIDGE



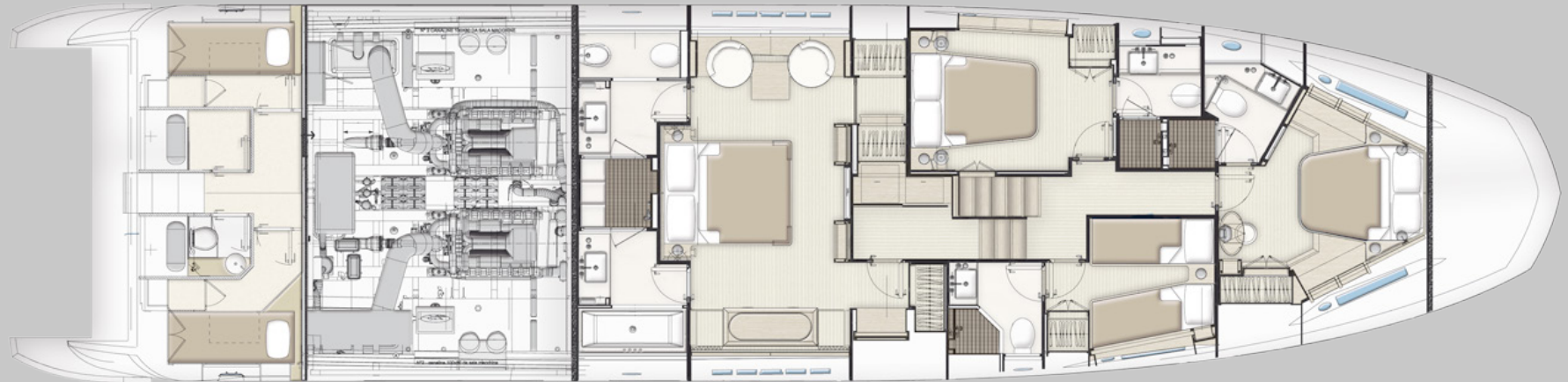
## MAIN DECK



## MAIN DECK - OPEN GALLEY



## LOWER DECK



**MIRAGE**