



JEMASA

Yacht Charter Details for 'JeMaSa', the 49.07m Superyacht built by Australian Navy

SPECIFICATIONS

LENGTH
49.07m / 161'

BEAM DRAFT
10m / 32'10 3.2m / 10'6

YEAR REFIT
1973 2025

CRUISING SPEED
12 Knots

ACCOMMODATION

GUESTS	CABINS	CREW
12	7	16

CABIN CONFIGURATION

1 Master	2 Double
2 Convertible	2 Bunk Beds

CHARTER RATES

SUMMER
from
\$231,000 / week + expenses

WINTER
from
\$231,000 / week + expenses

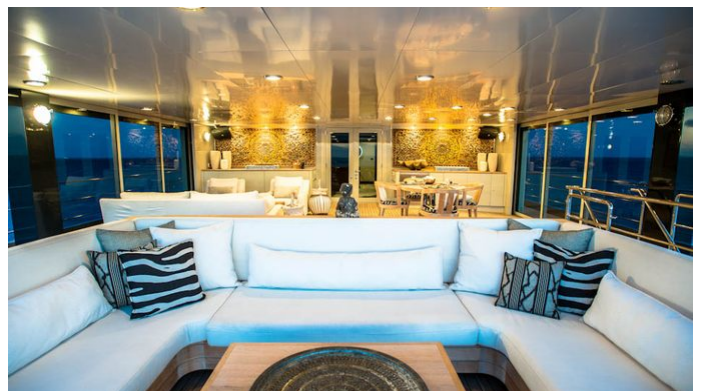
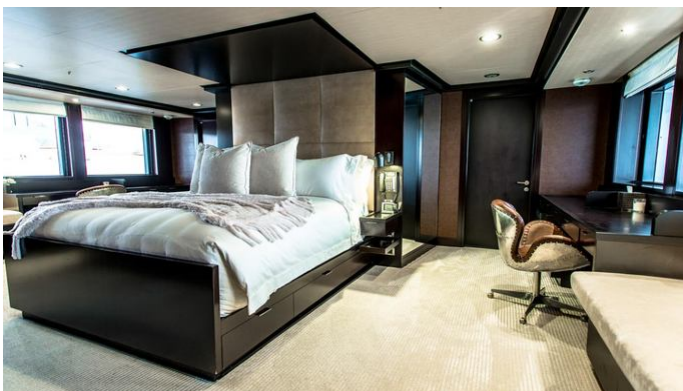
Details correct as of 6 Apr, 2025

FOR MORE INFORMATION:

[CLICK HERE](#) 

or SCAN QR CODE





MORE PHOTOS, VIDEO OR INTERACTIVE DECK PLANS:



[CLICK HERE](#)

JEMASA YACHT CHARTER

Superyacht JEMASA was built in 1973 by Australian Navy. She is a 49.07m / 161' motor yacht with exterior design by Marine . JeMaSa offers accommodation for up to 12 guests in 7 cabins with additional room for her crew of 16. She features a variety of amenities to ensure comfortable charter vacations, including, Air Conditioning, Stabilizers at Anchor, Stabilisers underway, WiFi connection on board, Deck Jacuzzi, Gym/exercise equipment, Helipad, Massage Room & Outdoor Cinema. She also carries an impressive collection of toys as listed below.

JEMASA AMENITIES & TOYS



Jacuzzi



Outdoor Cinema



Massage Room



Stabilizers Underway



Wi-Fi



At-Anchor Stabilizers



Deck Jacuzzi



Gym



Air Conditioning

For a full up-to-date list of leisure facilities or amenities onboard Motor Yacht JeMaSa please contact your Yacht Charter Broker prior to booking your vacation. If there is a particular water toy that you would like, but it is not listed, then it may be possible to rent this equipment for you.

MORE TENDERS, TOYS & YACHT AMMENITIES INFO:



[CLICK HERE](#)

CHARTER JEMASA

If you are interested in chartering JEMASA please contact your yacht charter broker for more information about booking a luxury charter vacation on board this Australian Navy superyacht .