



CARMEN SERENA

Yacht Charter Details for 'Carmen Serena', the 40m Superyacht built by Marine Industrial Technologies

SPECIFICATIONS

LENGTH
40m / 131'3

BEAM
7.4m / 24'3

DRAFT
2.45m / 8'

YEAR
1993

REFIT
2020

CRUISING SPEED
12 Knots

ACCOMMODATION

GUESTS	CABINS	CREW
10	5	8

CABIN CONFIGURATION

CHARTER RATES

SUMMER
from
€72,100 / week + expenses

WINTER
from
€72,100 / week + expenses

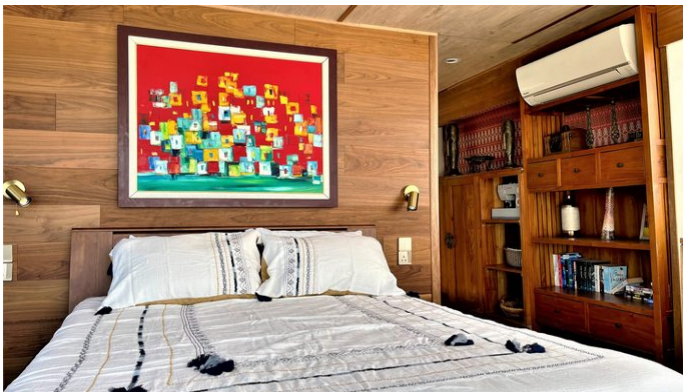
Details correct as of 20 Sep, 2024

FOR MORE INFORMATION:

[CLICK HERE](#) 

or SCAN QR CODE





MORE PHOTOS, VIDEO OR INTERACTIVE DECK PLANS:



[CLICK HERE](#)

CARMEN SERENA YACHT CHARTER

Superyacht CARMEN SERENA was built in 1993 by Marine Industrial Technologies. She is a 40m / 131'3 motor yacht with exterior design by Lally Poulias and interior styling by Lally Poulias . Carmen Serena offers accommodation for up to 10 guests in cabins with additional room for her crew of . She features a variety of amenities to ensure comfortable charter vacations. She also carries an impressive collection of toys as listed below.

CARMEN SERENA AMENITIES & TOYS

For a full up-to-date list of leisure facilities or amenities onboard Motor Yacht Carmen Serena please contact your Yacht Charter Broker prior to booking your vacation. If there is a particular water toy that you would like, but it is not listed, then it may be possible to rent this equipment for you.

MORE TENDERS, TOYS & YACHT AMMENITIES INFO:



[CLICK HERE](#)

CHARTER CARMEN SERENA

If you are interested in chartering CARMEN SERENA please contact your yacht charter broker for more information about booking a luxury charter vacation on board this Marine Industrial Technologies superyacht .