



MATA MUA

Yacht Charter Details for 'Mata Mua', the 38.5m Superyacht built by Scheepswerf Friesland

SPECIFICATIONS

LENGTH
38.5m / 126'4

BEAM
8.1m / 26'7

DRAFT
3.6m / 11'10

YEAR
1993

REFIT
2017

CRUISING SPEED
10 Knots

ACCOMMODATION

GUESTS
9

CABINS
4

CREW
6

CABIN CONFIGURATION

1 Master
1 Double
1 Pullman

1 VIP
1 Twin

CHARTER RATES

SUMMER
from
€68,000 / week + expenses

WINTER
from
€68,000 / week + expenses

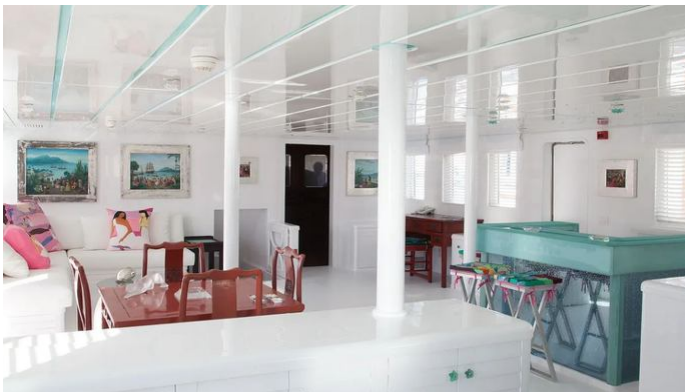
Details correct as of 20 Sep, 2024

FOR MORE INFORMATION:

[CLICK HERE](#) 

or SCAN QR CODE





MORE PHOTOS, VIDEO OR INTERACTIVE DECK PLANS:



[CLICK HERE](#)

MATA MUA YACHT CHARTER

Superyacht MATA MUA was built in 1993 by Scheepswerf Friesland. She is a 38.5m / 126'4 sail yacht with exterior design by Diana Yacht Design and interior styling by Lemmer . Mata Mua offers accommodation for up to 9 guests in 4 cabins with additional room for her crew of 6. She features a variety of amenities to ensure comfortable charter vacations, including Air Conditioning. She also carries an impressive collection of toys as listed below.

MATA MUA AMENITIES & TOYS



Air Conditioning

For a full up-to-date list of leisure facilities or amenities onboard Sail Yacht Mata Mua please contact your Yacht Charter Broker prior to booking your vacation. If there is a particular water toy that you would like, but it is not listed, then it may be possible to rent this equipment for you.

MORE TENDERS, TOYS & YACHT AMMENITIES INFO:



[CLICK HERE](#)

CHARTER MATA MUA

If you are interested in chartering MATA MUA please contact your yacht charter broker for more information about booking a luxury charter vacation on board this Scheepswerf Friesland superyacht .