

# ZALIV III



## ***A YARD ESTABLISHED TO BUILD CUSTOM YACHTS***

*Originally as shipbuilder and repairer since 1915, Campanella shipyard achieved success with a team of highly dedicated professionals at any level.*

*In 1978 the shipyard was acquired by Mondo Group that re-named it 'Mondo Marine'.*

*The yard is focusing on building light alloy and steel superyachts of over 40m. The emphasis is on totally custom builds, and every yacht is a unique creation that cannot be replaced.*

*Every MONDO MARINE design is inspired by emotion. Our work is always based on owners' demands, and we find a way to fulfill their dreams. Creating a yacht's interiors is a little like dressing a person - in this case, the owner! The Shipyard is owned by Alessandro Falciai and Roberto Zambrini.*



ZALIV III





ZALIV III





ZALIV III



ZALIV III





ZALIV III





ZALIV III



ZALIV III





ZALIV III















ZALIV III







ZAGLIV III



## SPECIFICHE TECNICHE

### DATI GENERALI

PROGETTO NAVALE:	<b>MONDO MARINE ENGINEERING</b>
DESIGN ESTERNI:	<b>GIORGIO VAFIADIS &amp; ASSOCIATES</b>
DESIGN INTERNI:	<b>LUCA DINI DESIGN</b>
REGISTRO DI CLASSE:	<b>ABS ⚡ A1 Ⓜ Commercial Yachting Service, ⚡ AMS</b>
MATERIALE COSTRUZIONE SCAFO:	<b>ALLUMINIO</b>
MATERIALE COSTRUZIONE SOVRASTRUTTURA:	<b>ALLUMINIO</b>

### DATI TECNICI

LUNGHEZZA FUORI TUTTO:	<b>49,36 m</b>
LARGHEZZA MASSIMA:	<b>9,00 m</b>
PESCAGGIO MASSIMO:	<b>2,30 m</b>
VELOCITÀ MASSIMA:	<b>23 nodi</b>
VELOCITÀ DI CROCIERA:	<b>21 nodi</b>
AUTONOMIA A 12 NODI:	<b>3.500 nm</b>
COMBUSTIBILE:	<b>80.000 l</b>
CASSE ACQUA DOLCE:	<b>11.800 l</b>
MOTORI PRINCIPALI:	<b>2 X MTU 16V 4000 M90</b>
POTENZA MASSIMA:	<b>2 X 3.645 HP a 2.100 giri/min</b>

## TECHNICAL SPECIFICATIONS

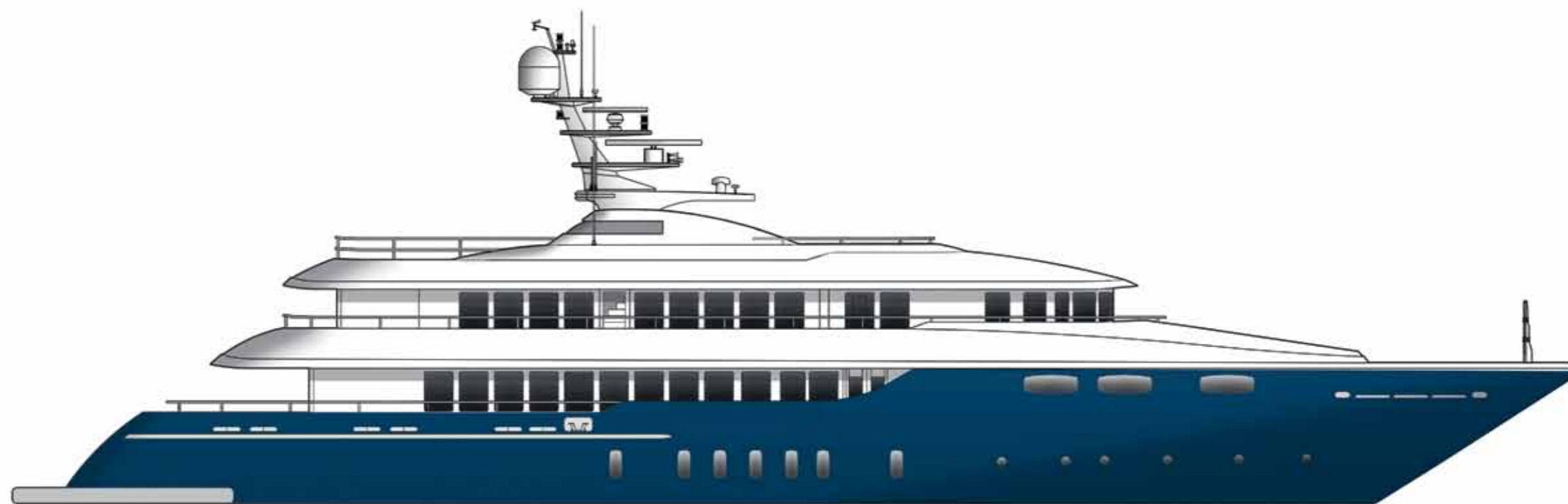
### GENERAL DATA

NAVAL ARCHITECTURE:	<b>MONDO MARINE ENGINEERING</b>
EXTERIOR DESIGN:	<b>GIORGIO VAFIADIS &amp; ASSOCIATES</b>
INTERIOR DESIGN:	<b>LUCA DINI DESIGN</b>
CLASS REGISTER:	<b>ABS ⚡ A1 Ⓜ Commercial Yachting Service, ⚡ AMS</b>
HULL MATERIAL:	<b>LIGHT ALLOY</b>
SUPERSTRUCTURE MATERIAL:	<b>LIGHT ALLOY</b>

### TECHNICAL DATA

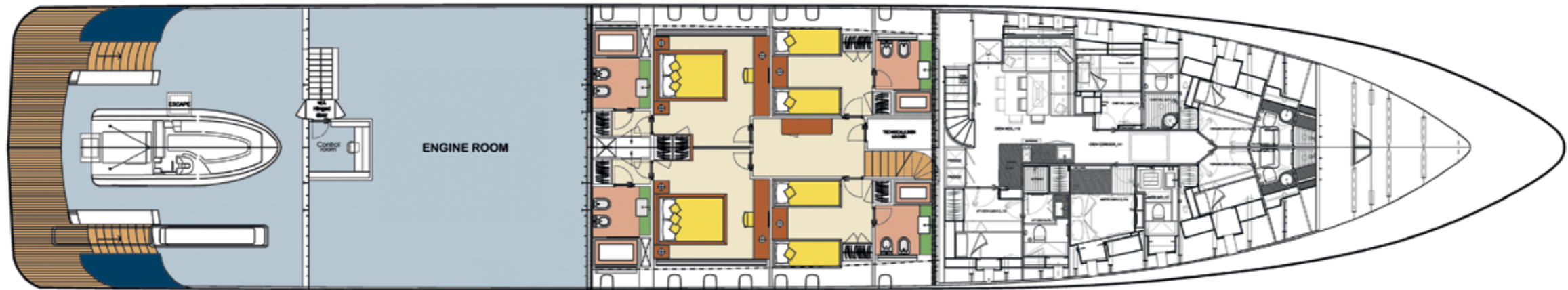
LENGTH OVERALL:	<b>49.36 m</b>
BEAM OVERALL:	<b>9.00 m</b>
DRAFT:	<b>2.30 m</b>
MAXIMUM SPEED:	<b>23 knots</b>
CRUISING SPEED:	<b>21 knots</b>
RANGE AT 12 KNOTS:	<b>3,500 nm</b>
FUEL CAPACITY:	<b>80,000 l</b>
FRESH WATER CAPACITY:	<b>11,800 l</b>
MAIN ENGINES:	<b>2 X MTU 16V 4000 M90</b>
MAXIMUM POWER:	<b>2 X 3,645 HP at 2,100 rpm</b>

## GENERAL ARRANGEMENT AND PROFILE

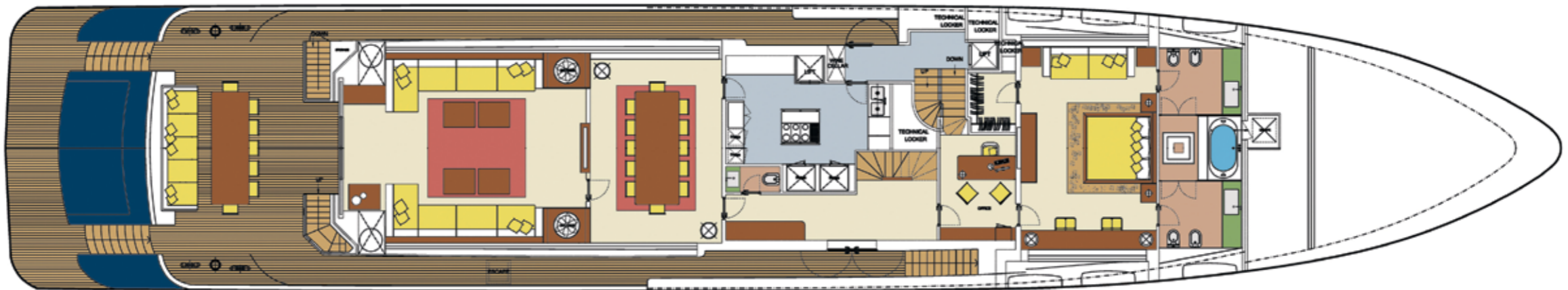




LOWER DECK



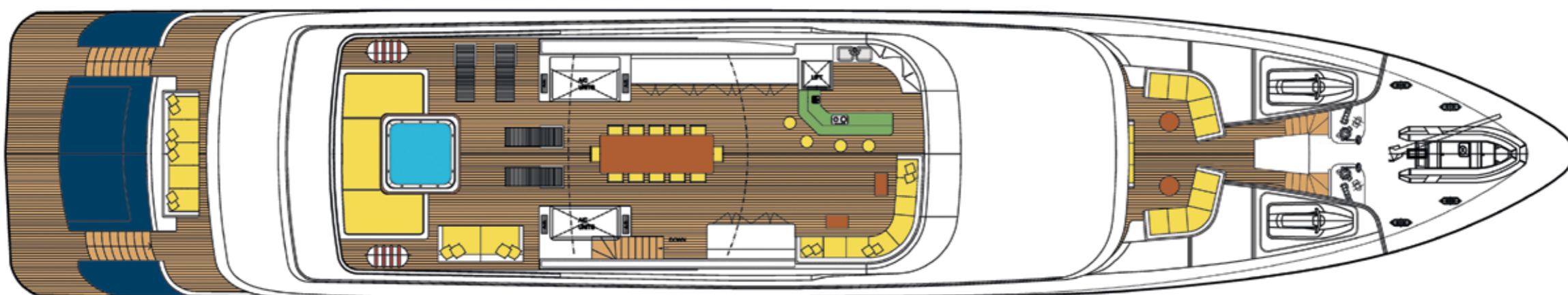
MAIN DECK

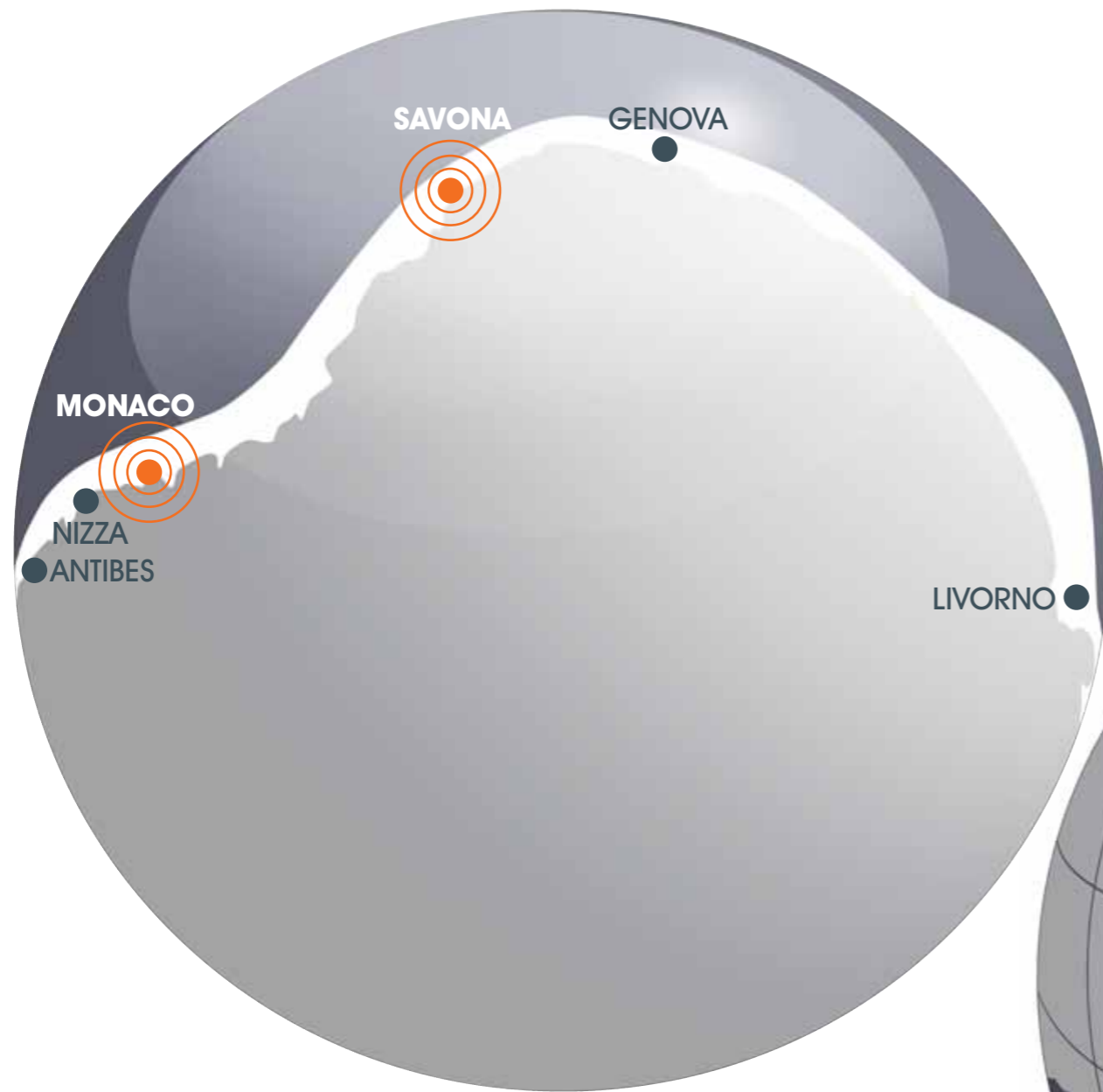


OWNER DECK



FLY DECK





**MONDO MARINE MC**

MONDO MARINE MC - 8, AVENUE DES LIGURES - 98000 MONACO MC - TEL. +377 977 72 080 - FAX +377 977 72 085

[WWW.MONDOMARINEMC.MC](http://WWW.MONDOMARINEMC.MC)

SHIPYARD - LUNGOMARE MATTEOTTI, 6 - 17100 SAVONA - ITALY