



Builder/Year
Lürssen Yachts, 2007

Designer exterior
Espen Ørno

Designer interior
Francois Zuretti

Length overall
70,20 m / 230'3"

Length in waterline
63,46 m / 208'2"

Beam 12,80 m / 41'10"
Draught 3,50 m / 11'5"

Construction material:
Steel hull and aluminium superstructure

Speed 15,5 knots max.
Range 4.000 nm at 12 knots

Main engines
2 x Caterpillar 3512 B,
each 1.500 KW / 2.038 hp

Generator sets
3 x Caterpillar C18,
each 350 kVA at 1.500 rpm

Emergency Genset
1 x Caterpillar C9,
190 kVA at 1.500 rpm

Stabilizers
Quantum zero speed
QC 1800 fwd and QC 1500 aft

Bow thruster
Brunvoll 200 kW,
elect. fixed pitch

Fuel capacity 150.000 l
Fuel capacity 200.000 l
Fresh water capacity 28.000 l

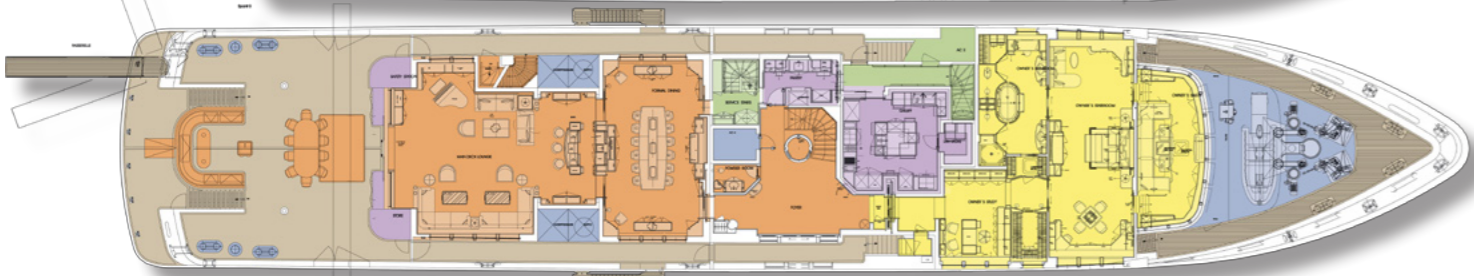
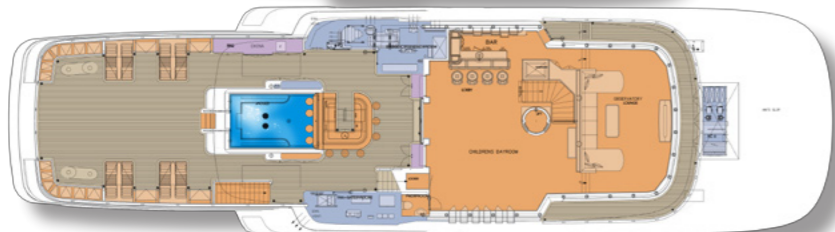
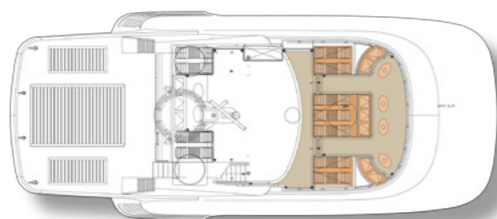
Fresh water makers
HEM, 2 x 18.000 l/day

Air conditioning
Heinen & Hopmann
chilled water, ducted air

Classification
LRoS - + 100A1, SSC Yacht
mono, G6+LMC UMS
MCA Large Yacht Code Compliant

Accommodation
Owner / Guests: 6 cabins for 12
Crew: 9 cabins for 19

SPECIFICATION



SAINT NICOLAS



LÜRSEN

Fr. Lürssen Werft GmbH & Co. KG
Zum Alten Speicher 11 · D - 28759 Bremen
Phone +49 421 66 04 166 · Fax +49 421 66 04 170
e-mail yachts@lurssen.com · www.lurssen.com



SAINT NICOLAS

The upper decks offer opportunities for in- and out-door dining, taking advantage of the panoramic sea view, as well as a children's play area, open-air gym and swimming pool complete with wet-and-dry bar.

At a huge 70 metres, this yacht features modern lines and a contemporary style. With a beam of 12,80m, she boasts extraordinary volumes for a yacht of her length, expanding over six decks and making her perfect for entertaining.

The overall effect of the interior design is of spaciousness and elegance. The use of a neutral but warm colour scheme and only the finest quality materials creates a classical, luxurious style which is carried throughout the yacht.

Saint Nicholas also houses three sizeable tenders in the boathouse after the engine room.

Powered by two CAT engines of 1.500 kW each, Saint Nicholas will reach a top speed of 15,5 knots and has a range of 4,000 nm.

In addition to the palatial owner's suite there are four guest cabins, which are divided into two double and two twin cabins, each with adjoining marble-decorated en-suite bathrooms. There is also a large VIP suite found on the bridge deck, with excellent views and good access to the main lounge.

