



LEGACY

112' 1" (34.14M) | WESTPORT | 2003

LEGACY

BASIC SPECIFICATIONS

BUILDER

Westport

FUEL TYPE

Diesel

GROSS TONNAGE

208 GT

CRUISING/MAX SPEED

12 knots / 25 knots

ACCOMMODATION

8 guests in 3 cabins

INTERIOR DESIGN

Pacific Custom Interiors

EXTERIOR DESIGN

Westport Yachts

LENGTH

112' 1" (34.14m)

BEAM

24' (7.29m)

HULL MATERIAL

GRP

CREW

5

FLAG

USA

BUILT/REFIT

2003 / 2023

DRAFT (F/M)

5' 7" (1.7m)

ENGINES

2 x MTU 2000 hp

LEGACY

KEY FEATURES

- › **PROVEN WESTPORT 112 PLATFORM OFFERING COMFORT, VOLUME, AND STABILITY**
- › **USD 4,000,000 IN UPGRADES COMPLETED IN 2023, INCLUDING FULL INTERIOR AND EXTERIOR REFITS.**
- › **EXPANSIVE FLYBRIDGE AND MULTIPLE INDOOR AND OUTDOOR DINING AREAS**
- › **PROFESSIONAL CREW OF 5 DELIVERING SEAMLESS CHARTER EXPERIENCES**
- › **SLEEPS 8 GUESTS IN 4 EN SUITE STATEROOMS (KING MASTER + 3 QUEENS)**
- › **JACUZZI SUNDECK WITH SPACIOUS LOUNGING AND SHADED AL FRESCO DINING**
- › **STARLINK HIGH-SPEED WIFI FOR SEAMLESS CONNECTIVITY AT SEA.**
- › **SHALLOW DRAFT IDEAL FOR BAHAMAS CRUISING AND SECLUDED ANCHORAGES**

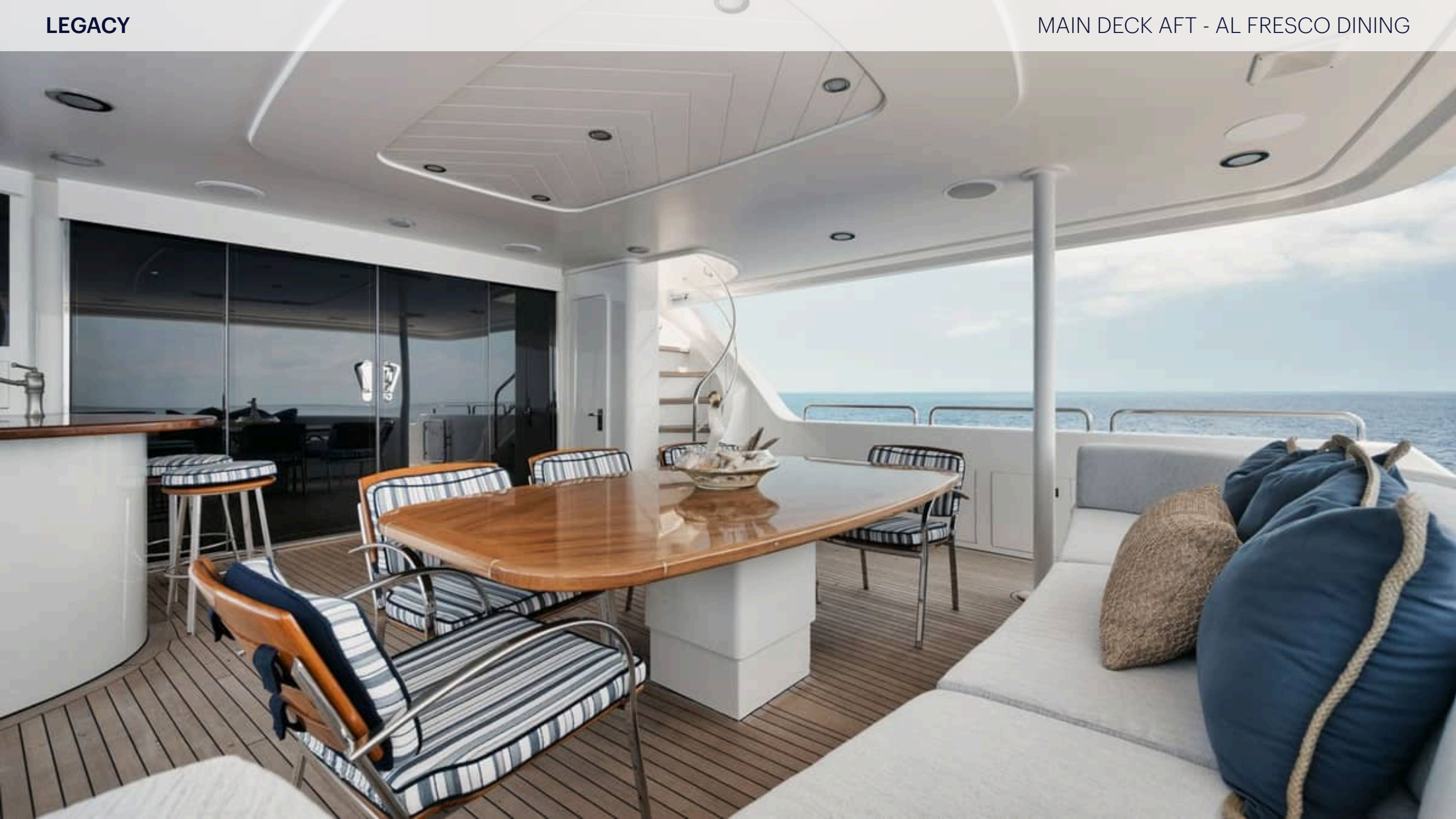
LEGACY

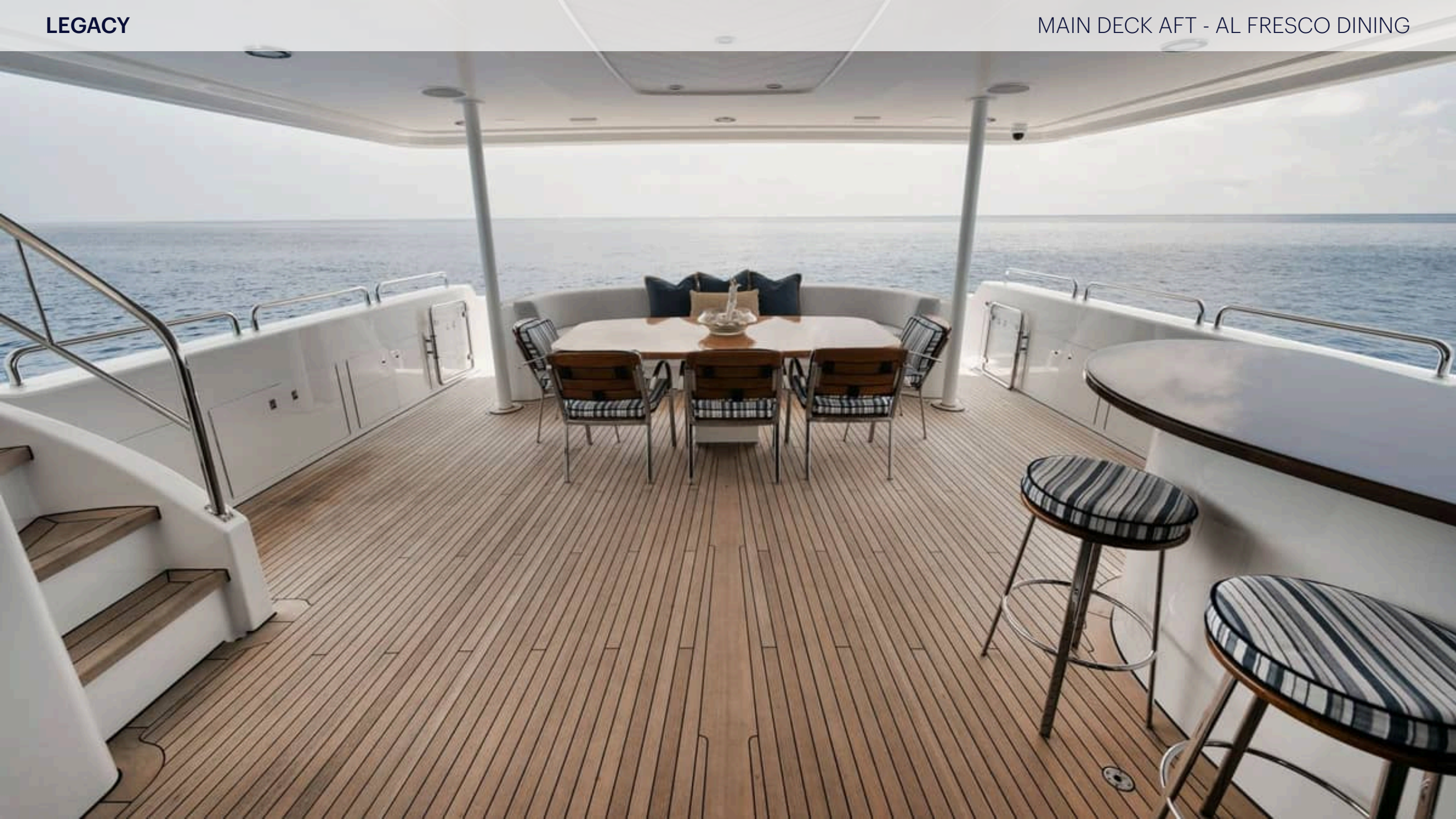
WATER TOYS

- › TENDER:
- › 16' 2023 WALKER BAY INFLATABLE WITH 70HP YAMAHA
- › 2 X SEA BOBS
- › 3 X SEA FANS
- › SPEARFISHING GEAR
- › 39' YELLOWFIN 2023 WITH QUAD 400HP MERCURY'S
- › TOYS:
- › 2 X WAKE BOARDS
- › 4 X NOMAD BROWNIE INDIVIDUAL HOOKAS
- › SNORKEL GEAR











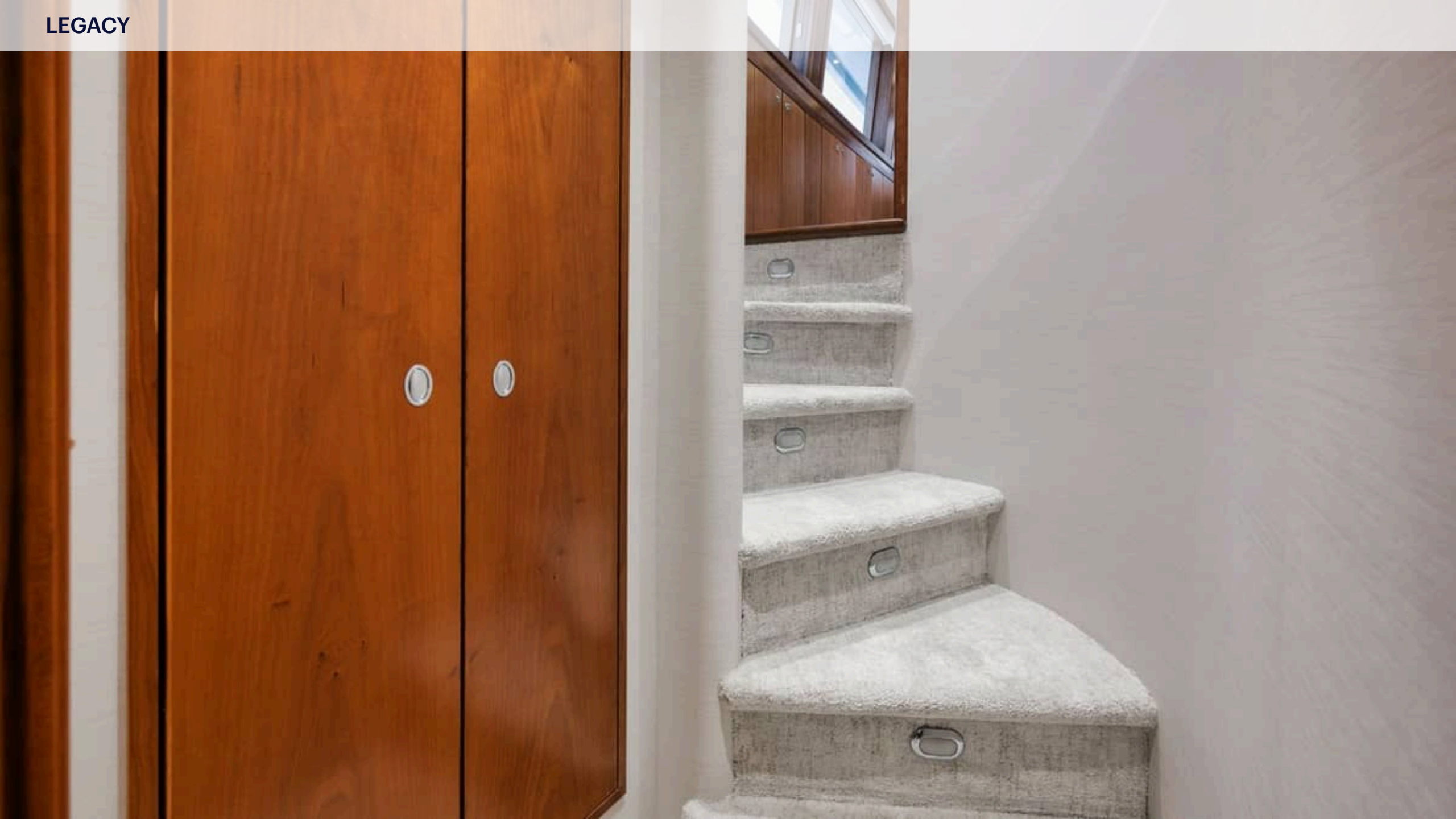






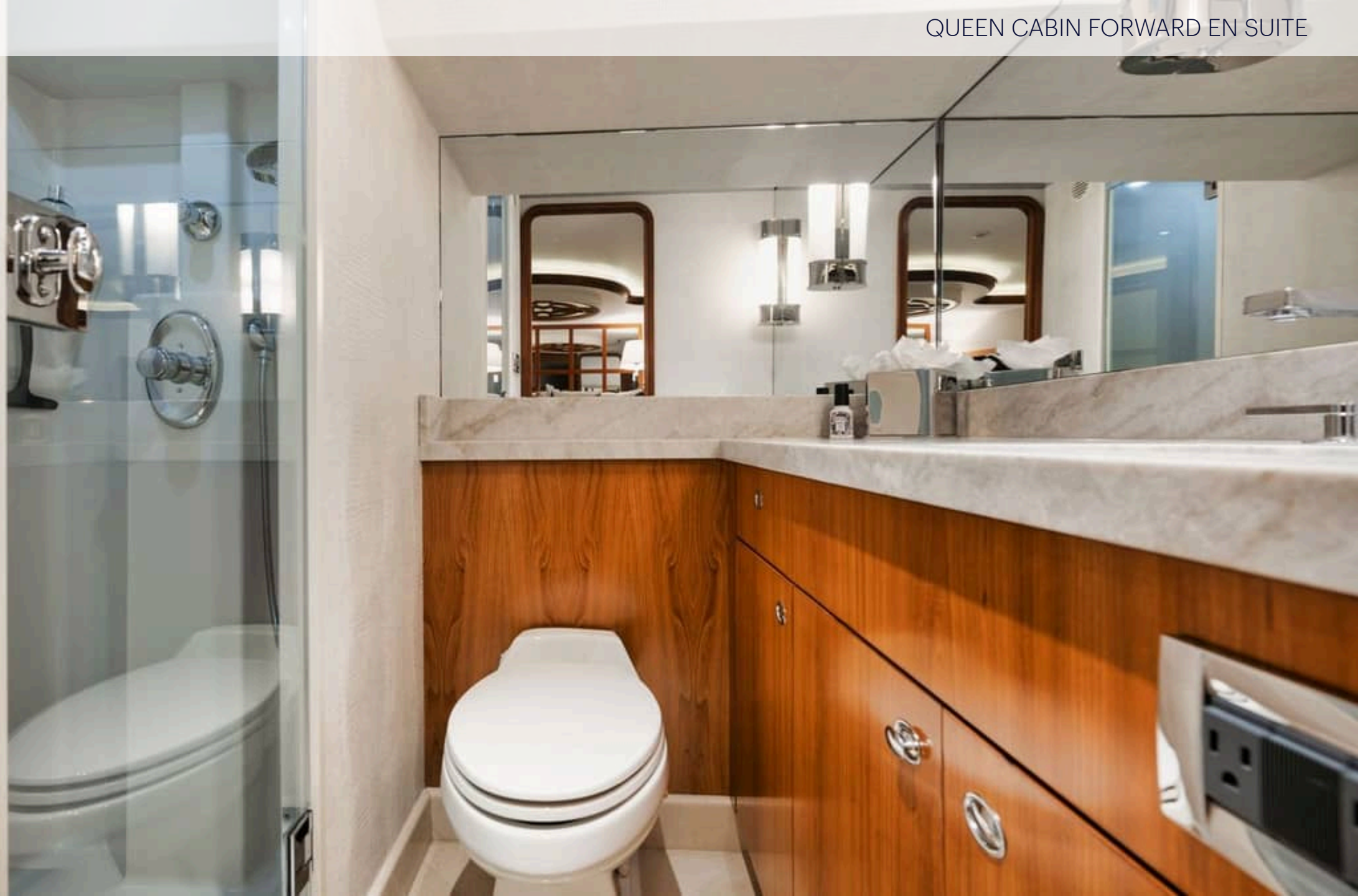


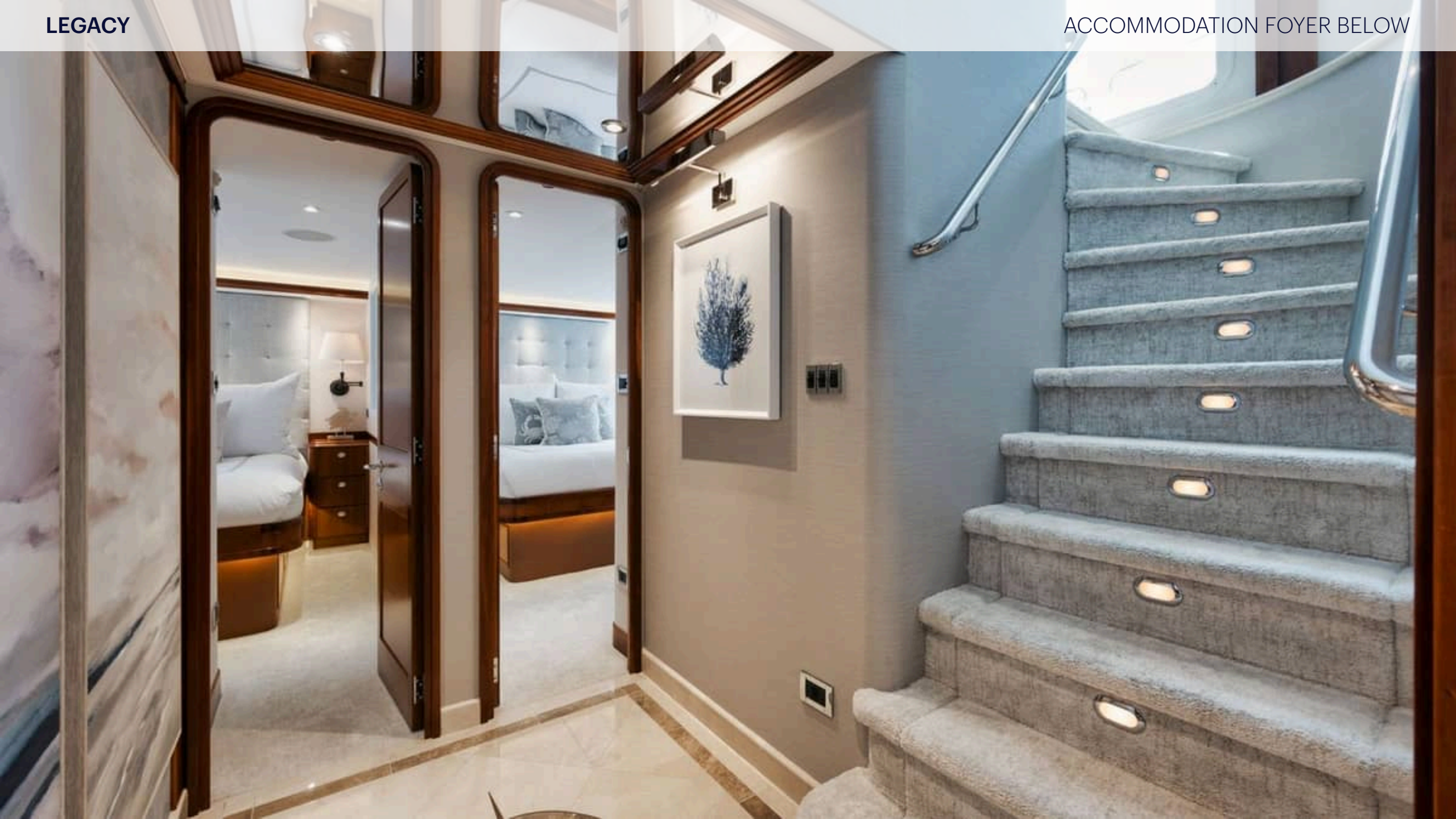


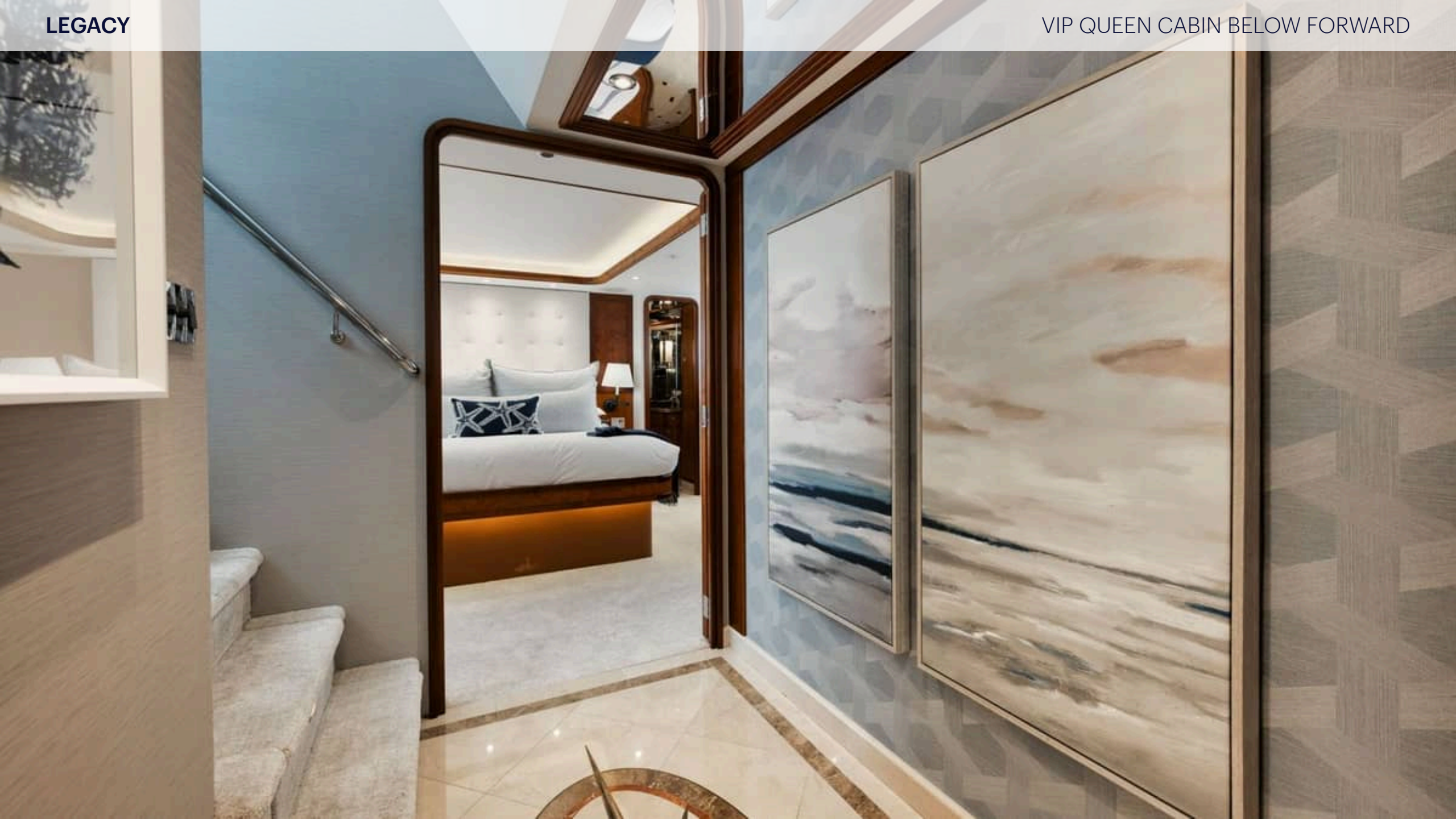




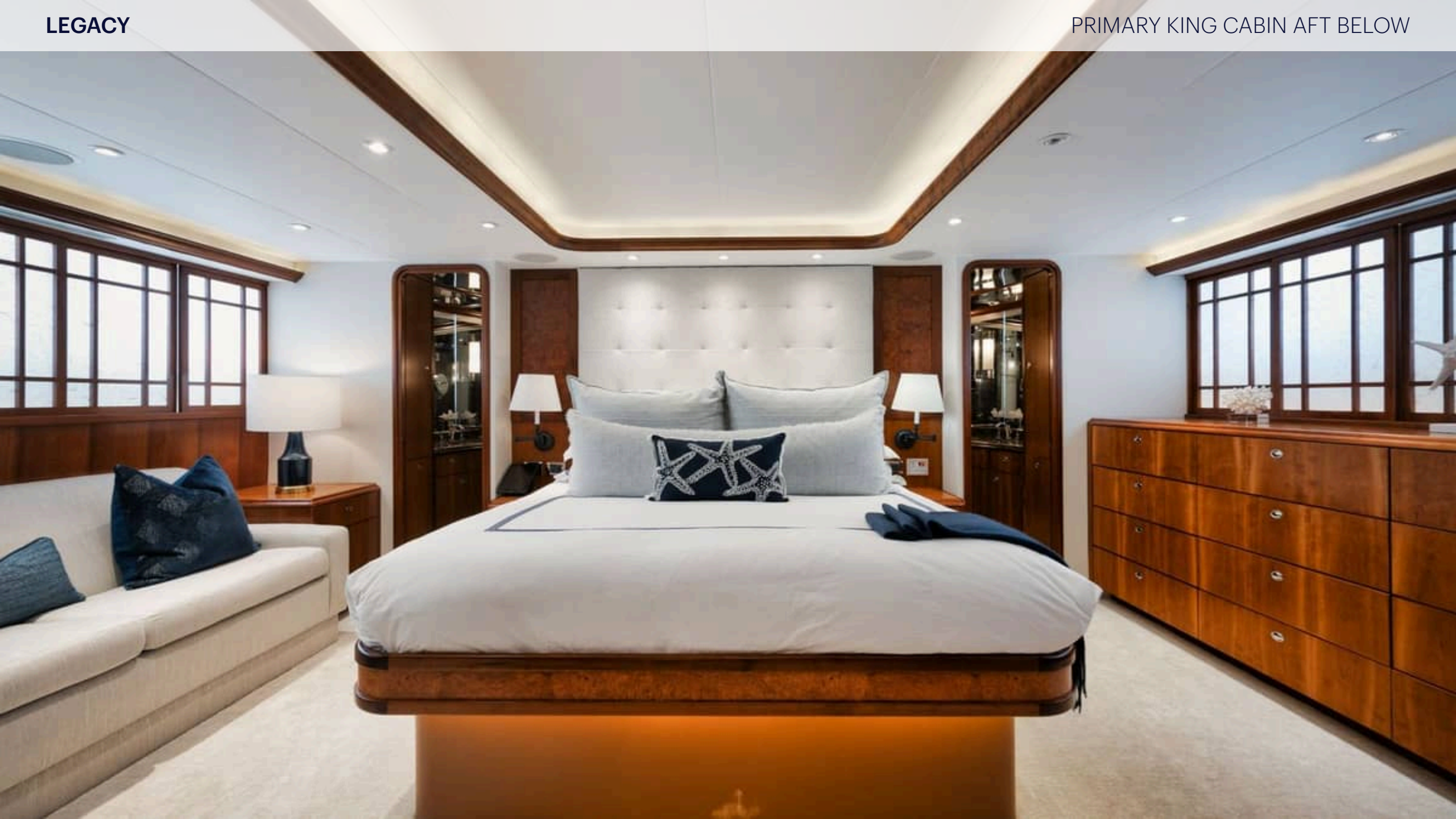


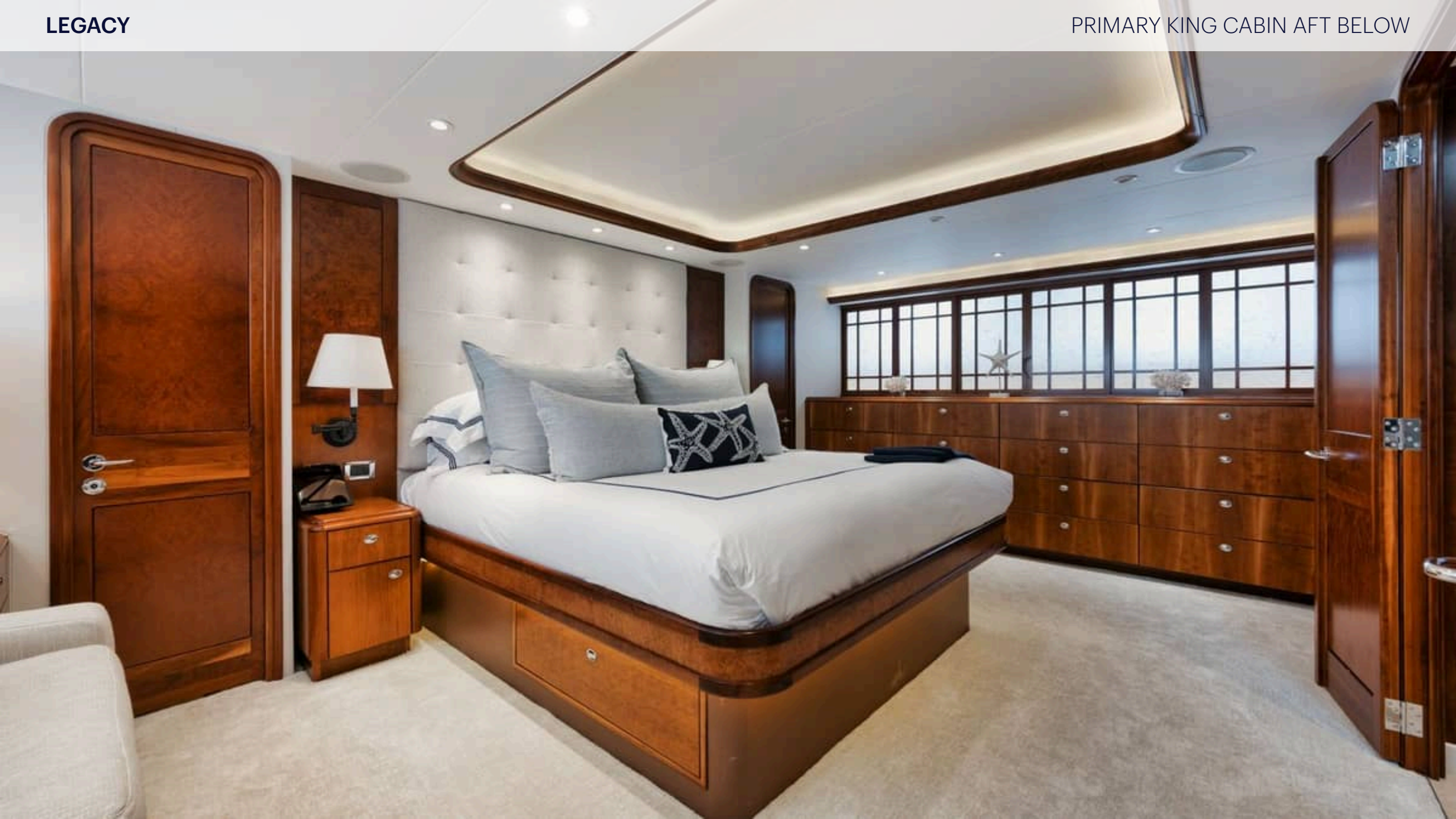


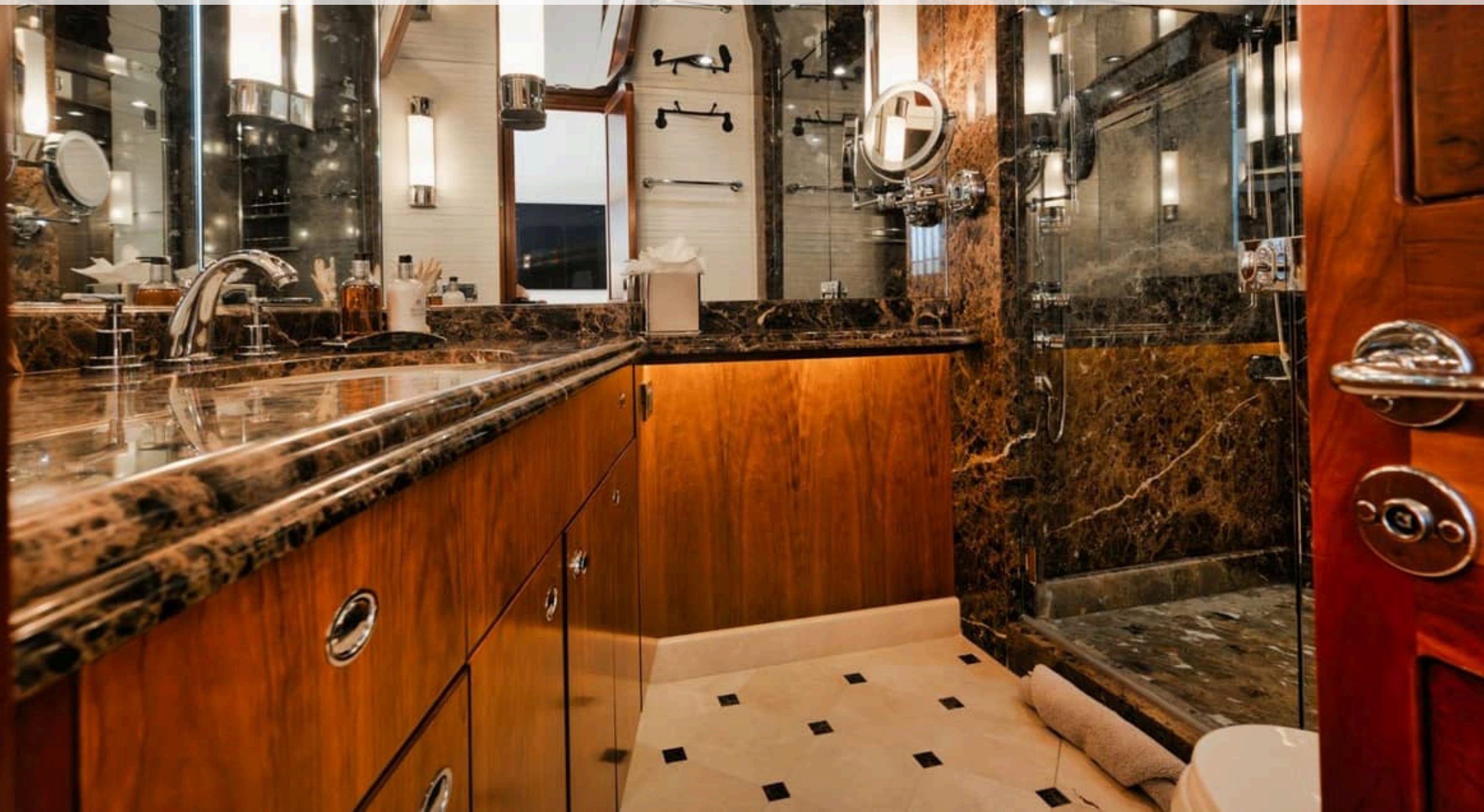


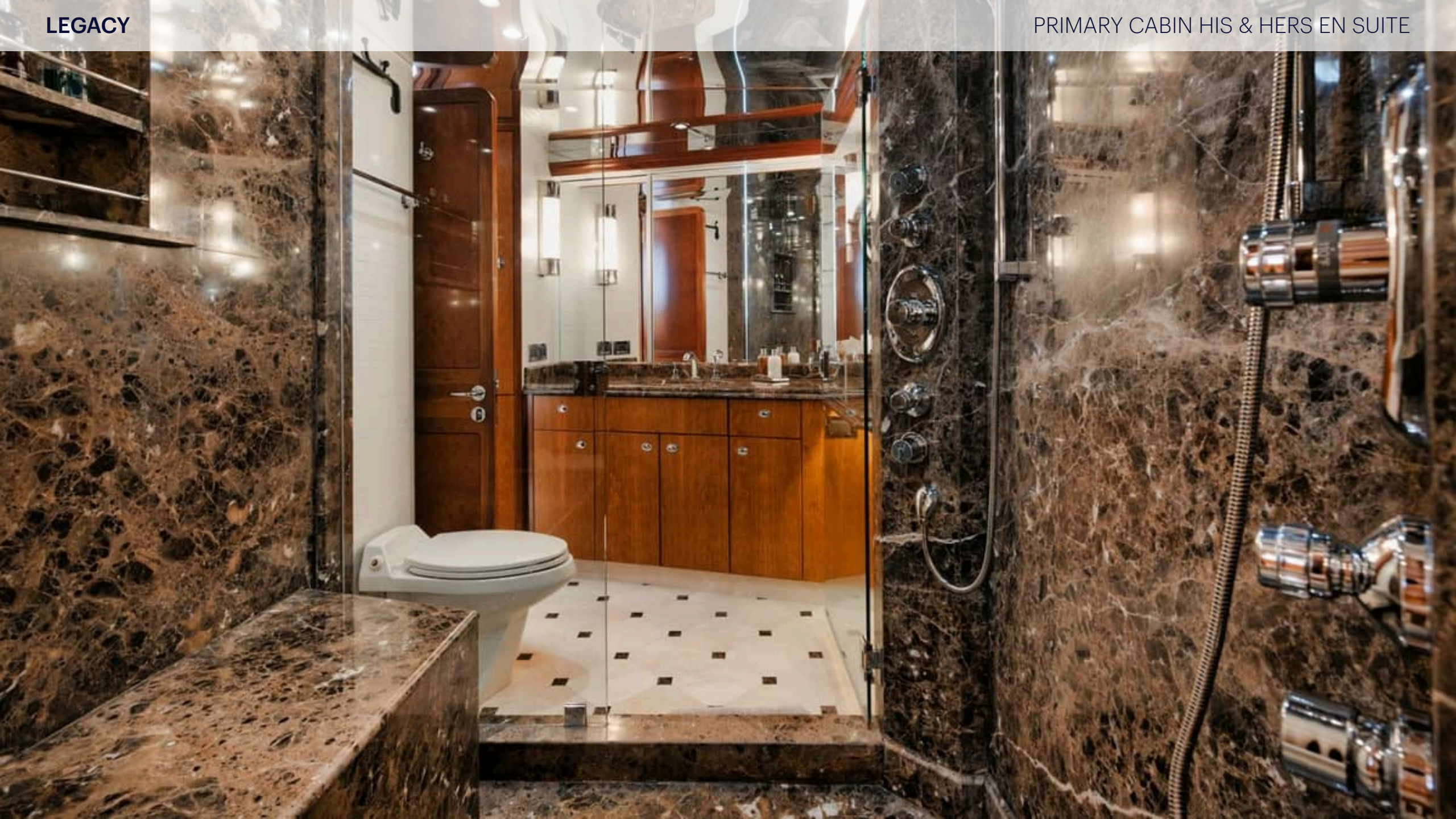


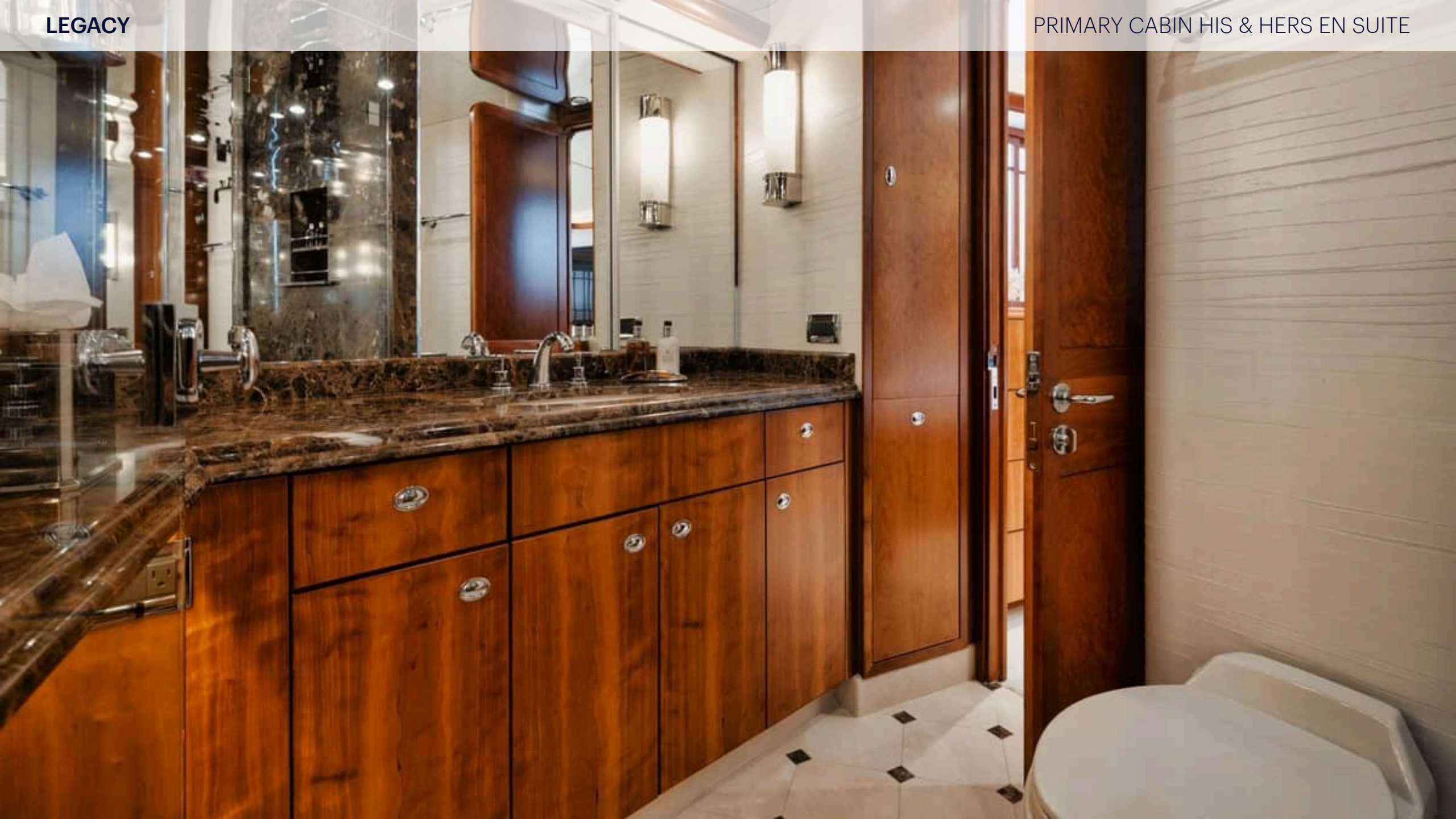


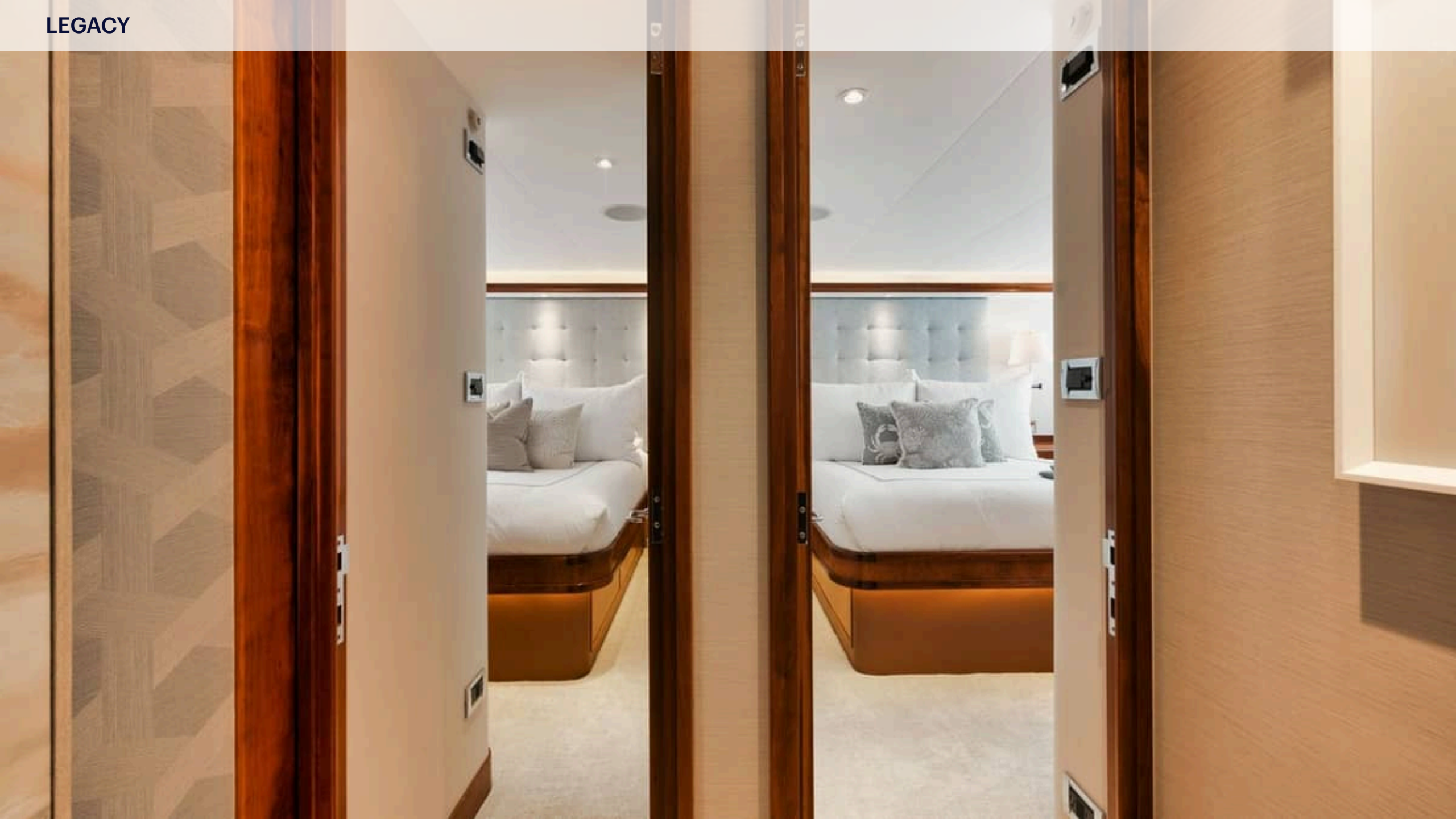






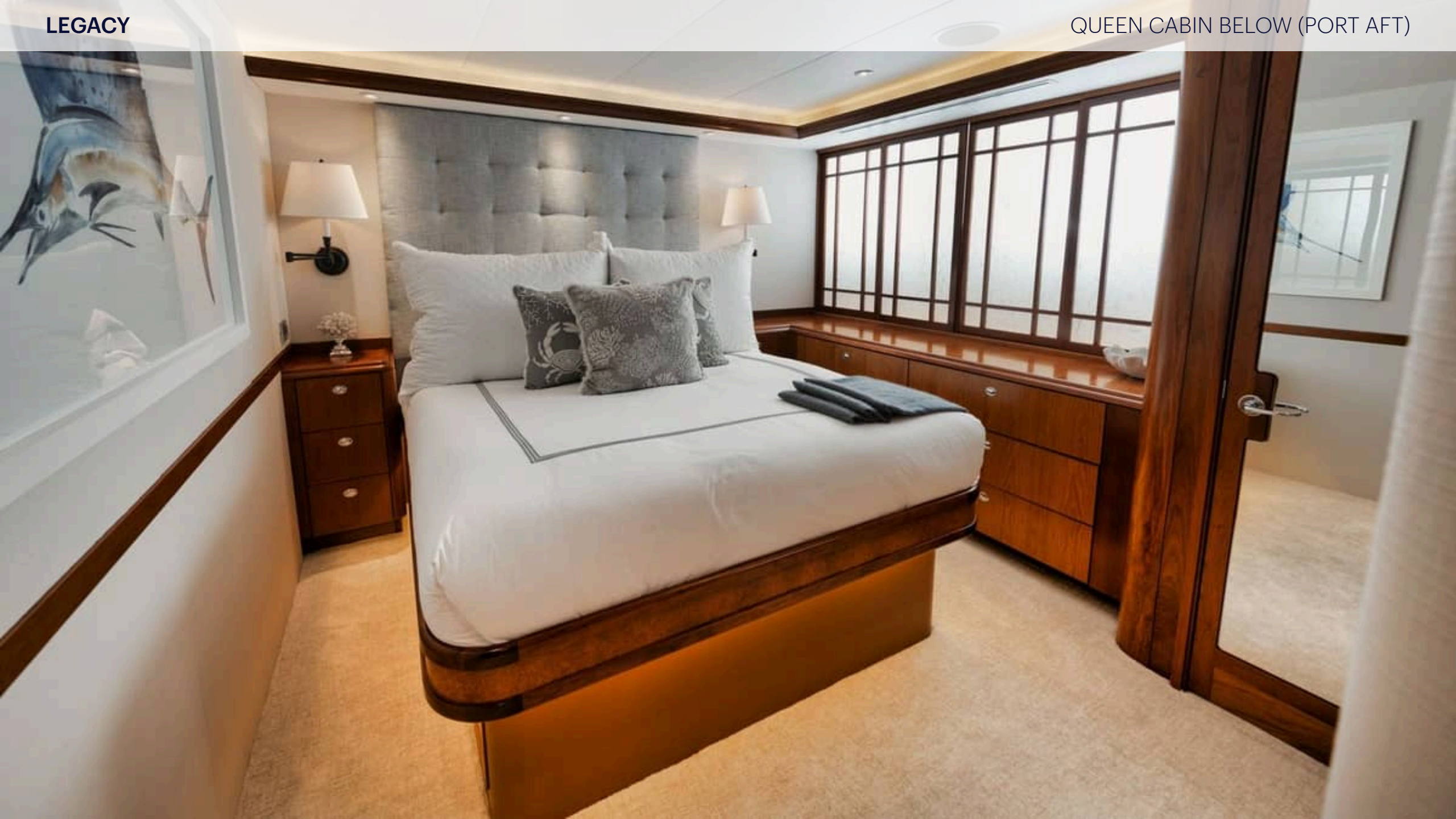




















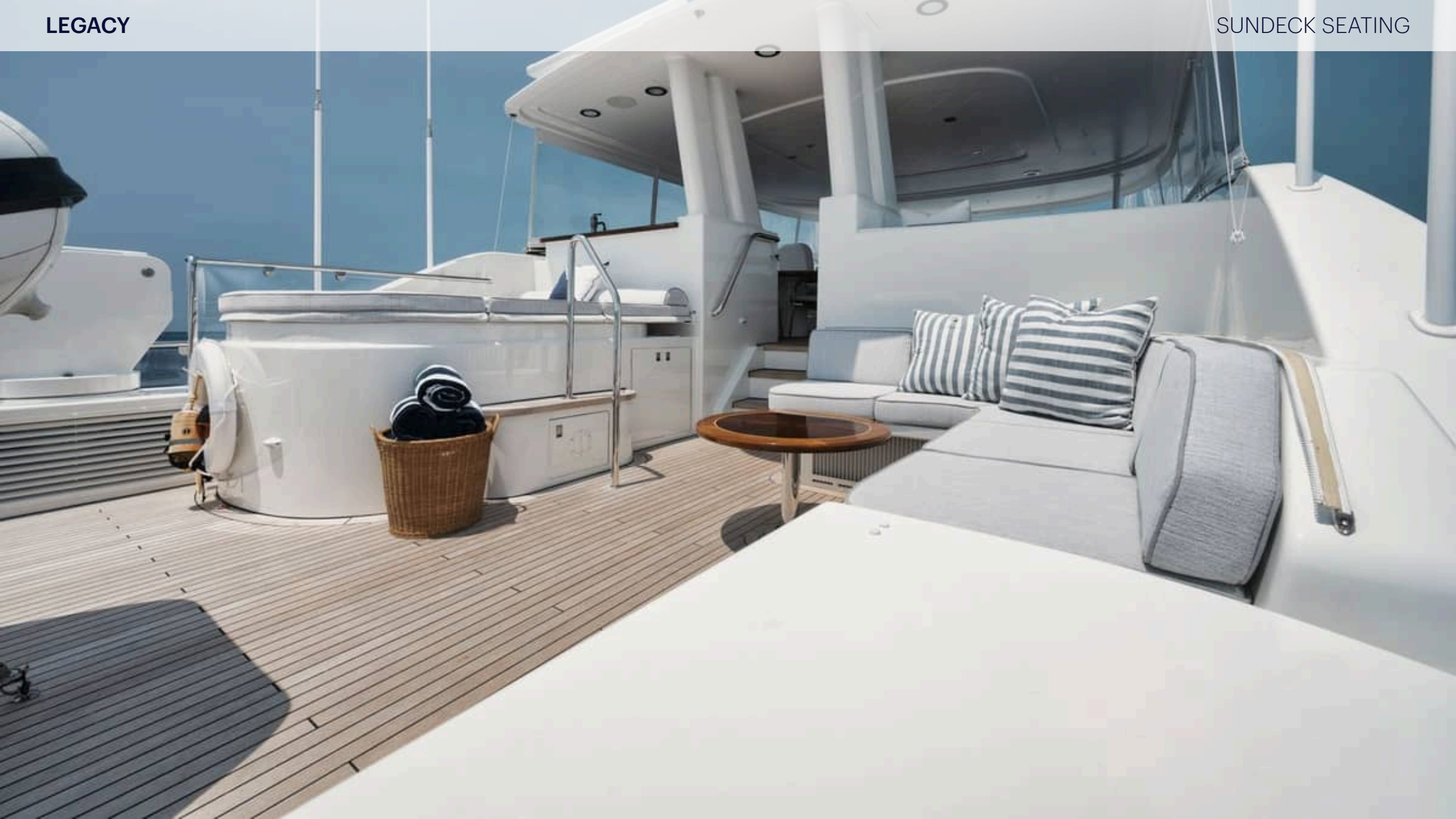


LEGACY













LEGACY

BOW SEATING













LEGACY

LEGACY

A low-angle, upward-looking shot of the front of a white boat. The word "LEGACY" is prominently displayed in large, raised, metallic letters across the front of the hood. Below the letters, a circular emblem is partially visible. The boat's interior ceiling is visible above, featuring several circular and rectangular lights and vents. The background shows a clear blue sky.

