

FOR CHARTER

KENSHO



From swim deck to sun deck, Kenshō is committed to life on the water. Her owner, in love with the at-sea lifestyle, threw convention out of the window with her layout. Using asymmetry, integrated outside living areas and spaces in unexpected places, he created a space that was totally dedicated to life on the water, allowing the sea to be viewed – and enjoyed – at every turn.

THE ART OF LIVING

Fun is promised on every level, from her swim deck with its gym, 6m swimming pool and high-octane collection of toys, to her sun deck, where everything from sunrise smoothies to sundowners can be enjoyed under a vast skylight. Inside, Kenshō's colossal interiors are calming and sophisticated. Six staterooms capture all the Zen of a Buddhist temple, with warm woods, paneling and genuine Asian-inspired touches from architectural design team Jouin Manku, all bathed in natural light from dawn until dusk. With a dedicated spa treatment room too, there's every opportunity for total relaxation, while the sensational quietness of the yacht, both underway and at anchor, is on another level to anything else – all designed to keep guests in absolute serenity. But the biggest attraction is always the sea, visible from every angle, and enjoyed at every moment.

FOR CHARTER



KENSHŌ

SPECIFICATION



BUILDER
ADMIRAL
YACHTS

BUILT
2022

GUESTS
12 + 4 STAFF
IN 8 CABINS

CREW
23

LENGTH
75.2M
(246'71")

BEAM
12.8M (41'9")

DRAFT
3.4M
(11'15")

MAX SPEED
15.8 KNOTS

FOR CHARTER

KENSHO



FOR CHARTER


KENSHO

Kenshō's interior spaces, connected by a central elevator and feature staircase, are made to feel even more spacious with lofty ceiling heights, large windows, and exceptionally wide walkways which connect the different living areas, rendering them almost open plan when doors are opened.

SPECTACULAR SPACES

Designed not as a floating palace but as an at-sea retreat, the layout has been adapted to suit how the yacht will be used, with the main salon found not on the main deck as one might expect, but in a remarkable configuration of forward and aft living spaces on the upper deck, with spectacular forward views afforded through full length 180° windows.

Design firm Jouin Manku, renowned for their architectural transformations of some of the world's most prominent hotels and restaurants, has created a beautiful, yet absolutely livable interior in their first yacht project, combining warm woods, soft lighting and Asian-inspired detailing to inspire a space that is not only intricately decorated and expertly crafted, but is calming and perfectly balanced with life on the water.

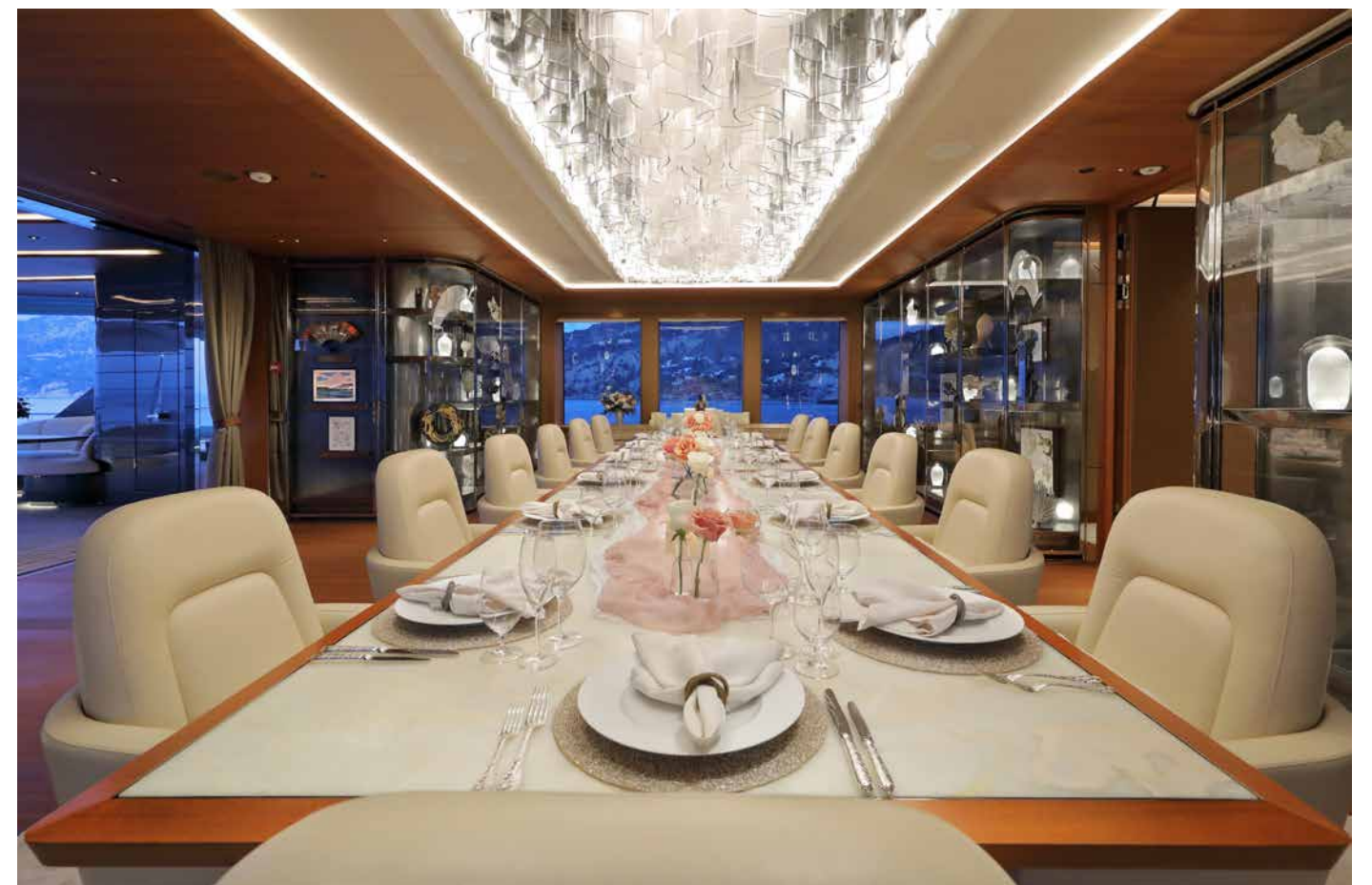
The image shows the main salon of a yacht. The room is characterized by its warm, dark wood paneling and a ceiling with intricate, layered, organic patterns. Two large, white, curved sofas face each other, flanking a central round wooden coffee table. A large flat-screen TV is mounted on the back wall, displaying a cityscape. To the right, a large abstract painting with vibrant, colorful lines is displayed. Large windows on the left and right sides offer a view of the ocean. The lighting is soft and ambient, creating a calm and sophisticated atmosphere.

Design firm Jouin Manku, renowned for their architectural transformations of some of the world's most prominent hotels and restaurants, has created a beautiful, yet absolutely livable interior in their first yacht project, combining warm woods, soft lighting and Asian-inspired detailing to inspire a space that is not only intricately decorated and expertly crafted, but is calming and perfectly balanced with life on the water.





DINING AREA



KENSHŌ



LOUNGE

KENSHŌ



LOUNGE

KENSHŌ



GYM



KENSHO



ELEVATOR

KENSHO

Six staterooms capture all the Zen of a Buddhist temple, with warm woods, paneling and genuine Asian-inspired touches from architectural design team Jouin Manku, all bathed in natural light from dawn until dusk.

A MASTERCLASS IN RELAXATION

The principal suite is an on-the-water retreat, with four interconnecting rooms: a lounge/media room with curved sofa, bedroom, dressing room and bathroom with a central tub, all of which are inspired by Asian myth and modern craftsmanship. Loft-like volume and views to port and starboard through full length opening windows create a feeling of space and tranquility.





PRINCIPAL STATEROOM



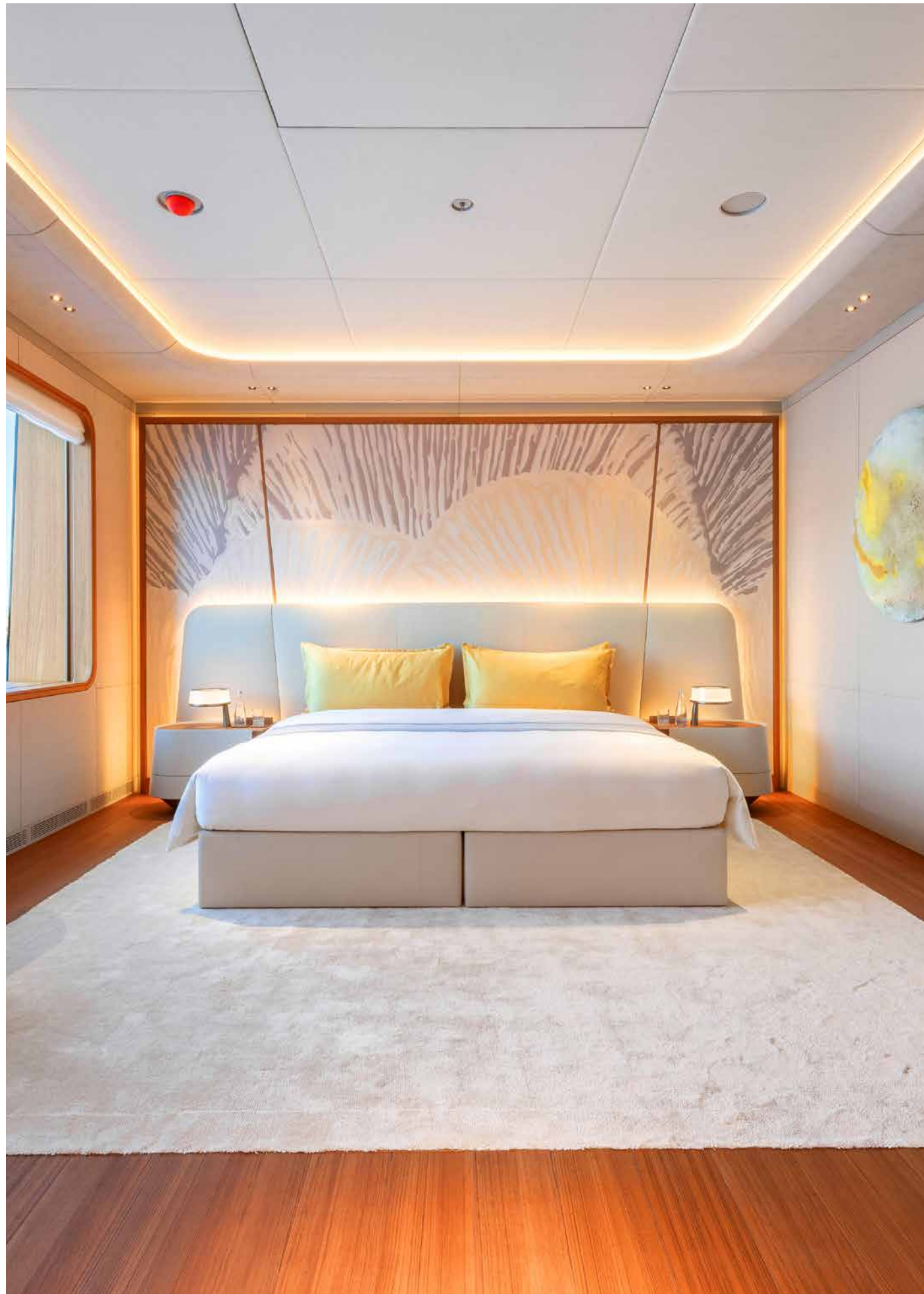
KENSHŌ





GUEST STATEROOMS

KENSHŌ



GUEST STATEROOMS



KENSHO



GUEST STATEROOMS

KENSHŌ

Kenshō's exterior living spaces extend across four decks, from a sprawling swim deck with 6m glass-fronted pool on the lower deck, to a magnificent indoor-outdoor sun deck crowned by a unique skylight on the top.

SENSATIONAL. ALL DAY, EVERYDAY.

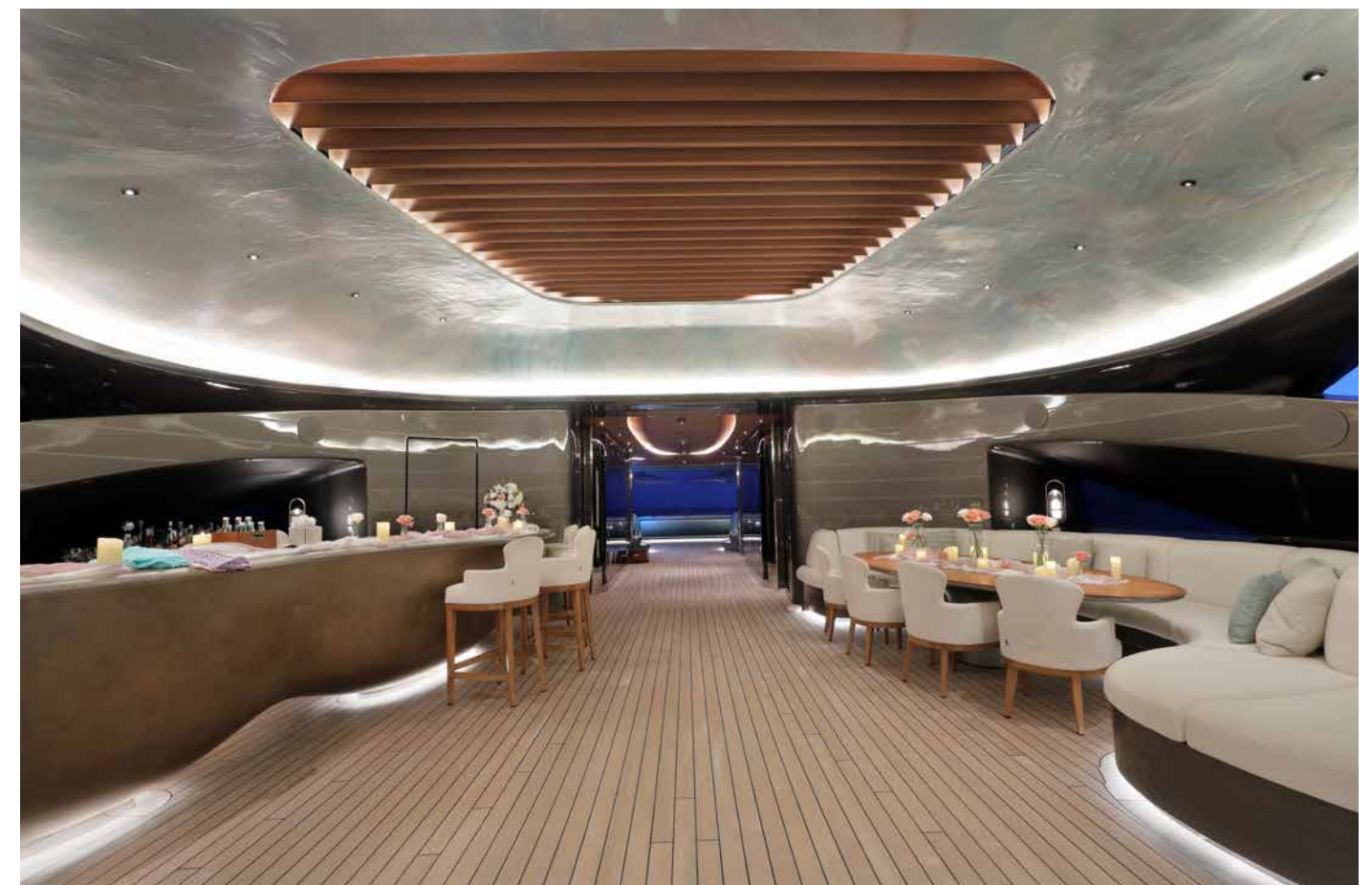
From fitness to relaxation or entertaining, guests' needs are met by a variety of different areas, including a state-of-the-art gym on the swim deck, a secluded forward lounging area on the bow, a sheltered dining area on the upper deck and fully-equipped bar on the sun deck.

The sun deck, also served by the elevator, is a spectacular space, with forward and aft zones that are connected by one of the yacht's characteristic wide walkways. Glass windbreak doors can be shut, allowing total protection from the elements, or left open, allowing guests to enjoy the breeze – and uninterrupted views – through the centre of the yacht.





SUN DECK



KENSHŌ





SUN DECK

KENSHŌ





UPPER DECK AFT



KENSHO





MAIN DECK AFT



KENSHŌ





KENSHO

GEORGE TOWN

LOWER DECK

KENSHO





EXTERIOR LIVING

KENSHŌ



EXTERIOR LIVING

KENSHO



THIS IS KATANA

KATANA

KENSHŌ

SPECIFICATION



BUILDER
ALIA YACHTS

GUESTS
12

LENGTH
13M (42'66")

DRAFT
0.7M (2'3")

BUILT
2024

CREW
2

BEAM
3.9M (12'8")

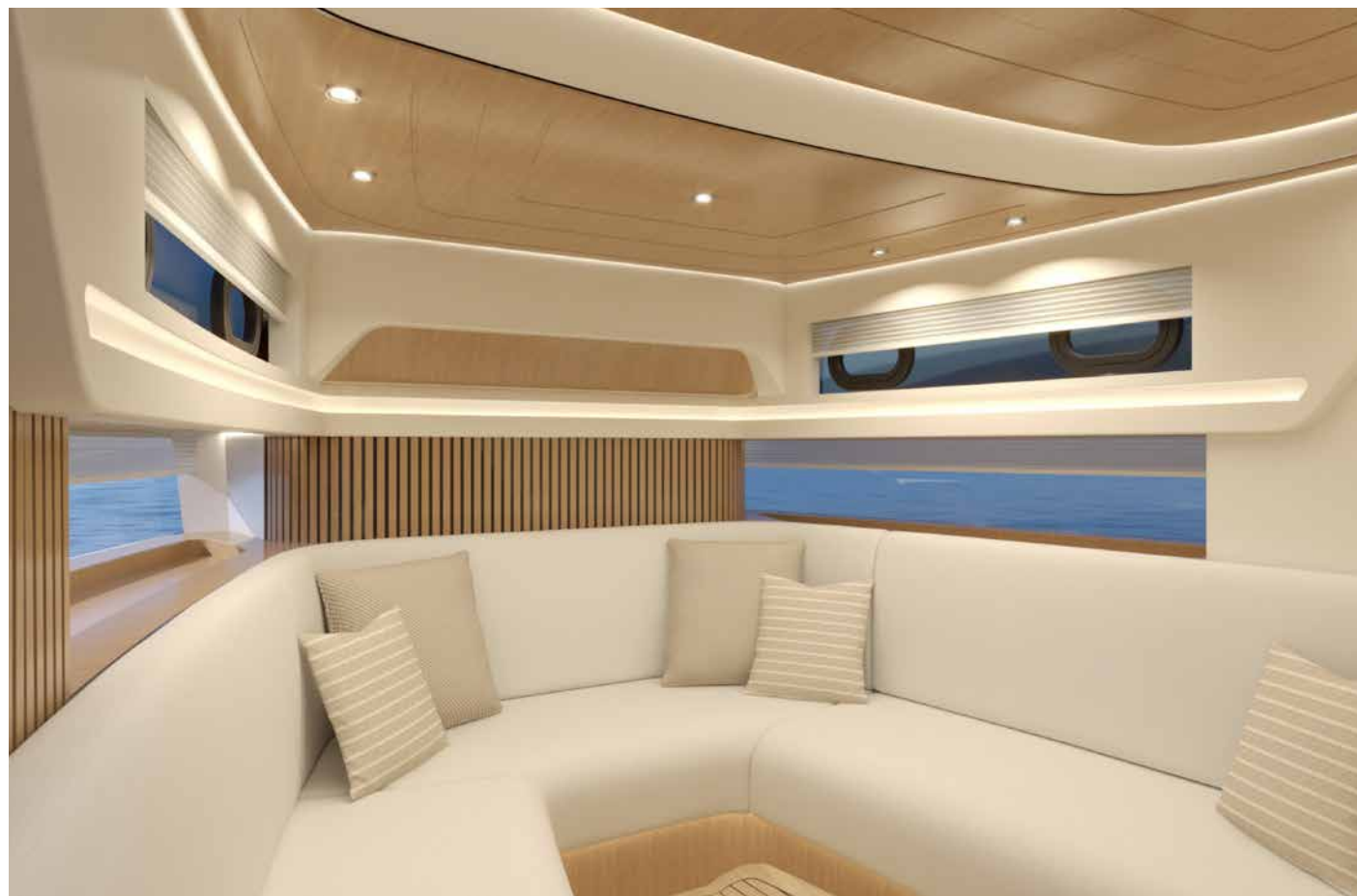


Step aboard Katana, the embodiment of freedom. With comfortable indoor and outdoor seating, a swim platform and sun lounging area, Katana isn't just a dayboat, she's a passport to new experiences that are inaccessible to most charter guests.

THE FREEDOM OF THE OCEAN

Imagine impromptu lunches on secluded sandbanks, or exploring hidden bays and tranquil inlets that others can only dream of. Katana's impressive speed ensures you can explore further, faster, making her the ideal vessel for hosting dive expeditions wildlife-watching excursions or hosting beach barbeques.





KATANA



KENSHO



KATANA



KENSHŌ



KATANA

KENSHŌ

Kenshō's custom 9-metre limousine tender not only shares the mothership's style and grace, but also features an integrated beach ladder on the foredeck, perfect for exploring harder-to-reach coves and bays.

ENDLESS FUN

Her collection of E-foils, E-bikes, jet skis and more will keep you having fun in the sun all day long.





THE TOYBOX

CUSTOM BUILT LIMO ^{9M}

SOLAS TENDER ^{7M}

JET SKIS ^{X2}

RADINN JET BOARD ^{X1}

LIFT E-FOIL ^{X1}

AUDI E-TRON E-FOIL ^{X1}

SEABOBS ^{X3}

**TOWABLES: COUCH, BANANA
AND A COUPLE OTHERS**

PADDLE BOARDS

PEDAL BOARDS

**INFLATABLE TRAMPOLINE AND CLIMBING CUBE
WITH SMALL SLIDE ON IT**

E-BIKES



TENDERS & TOYS



KENSHŌ









FOR CHARTER

KENSHŌ

SUN DECK

UPPER DECK

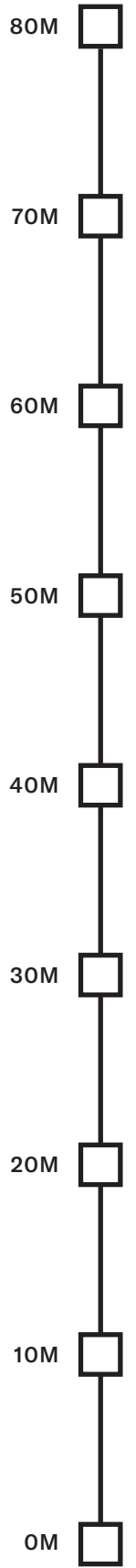
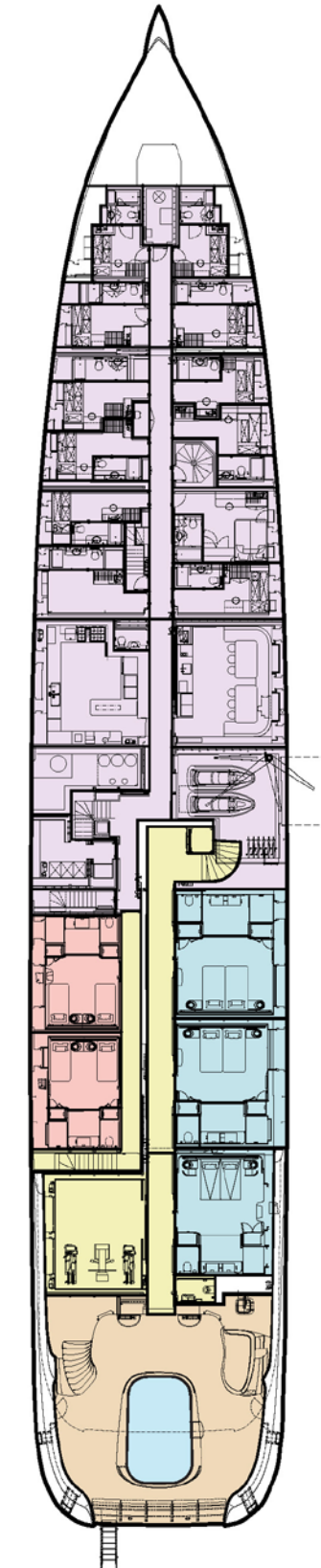
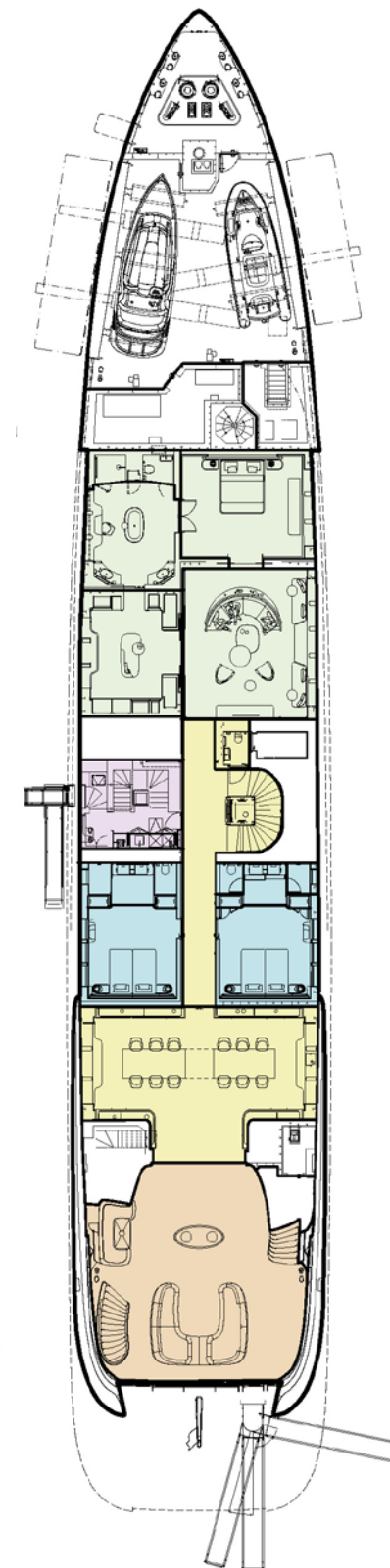
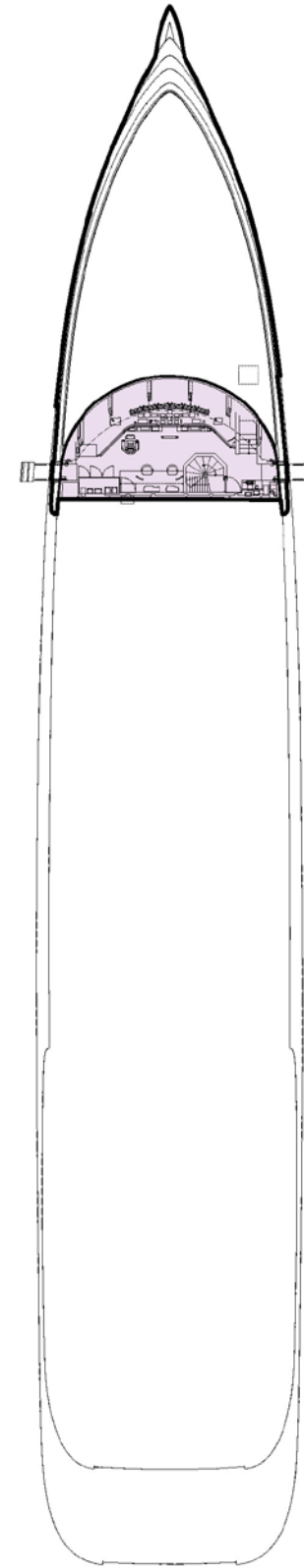
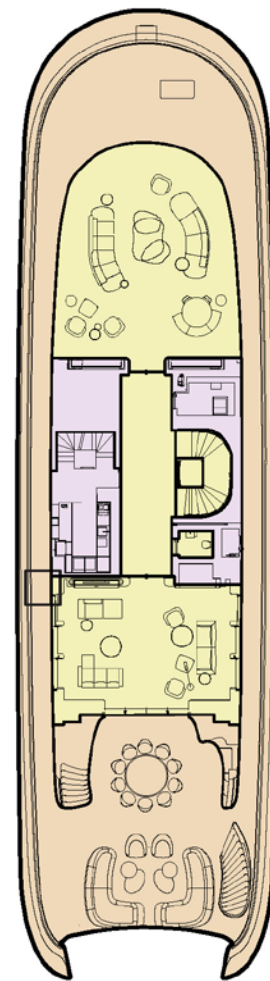
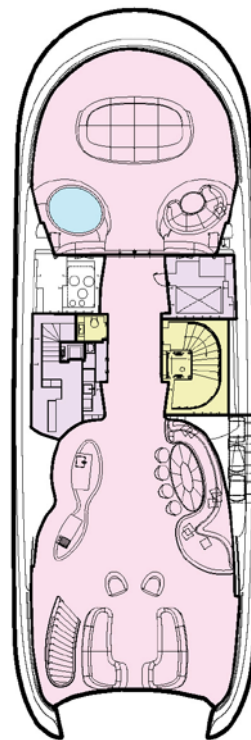
BRIDGE DECK

MAIN DECK

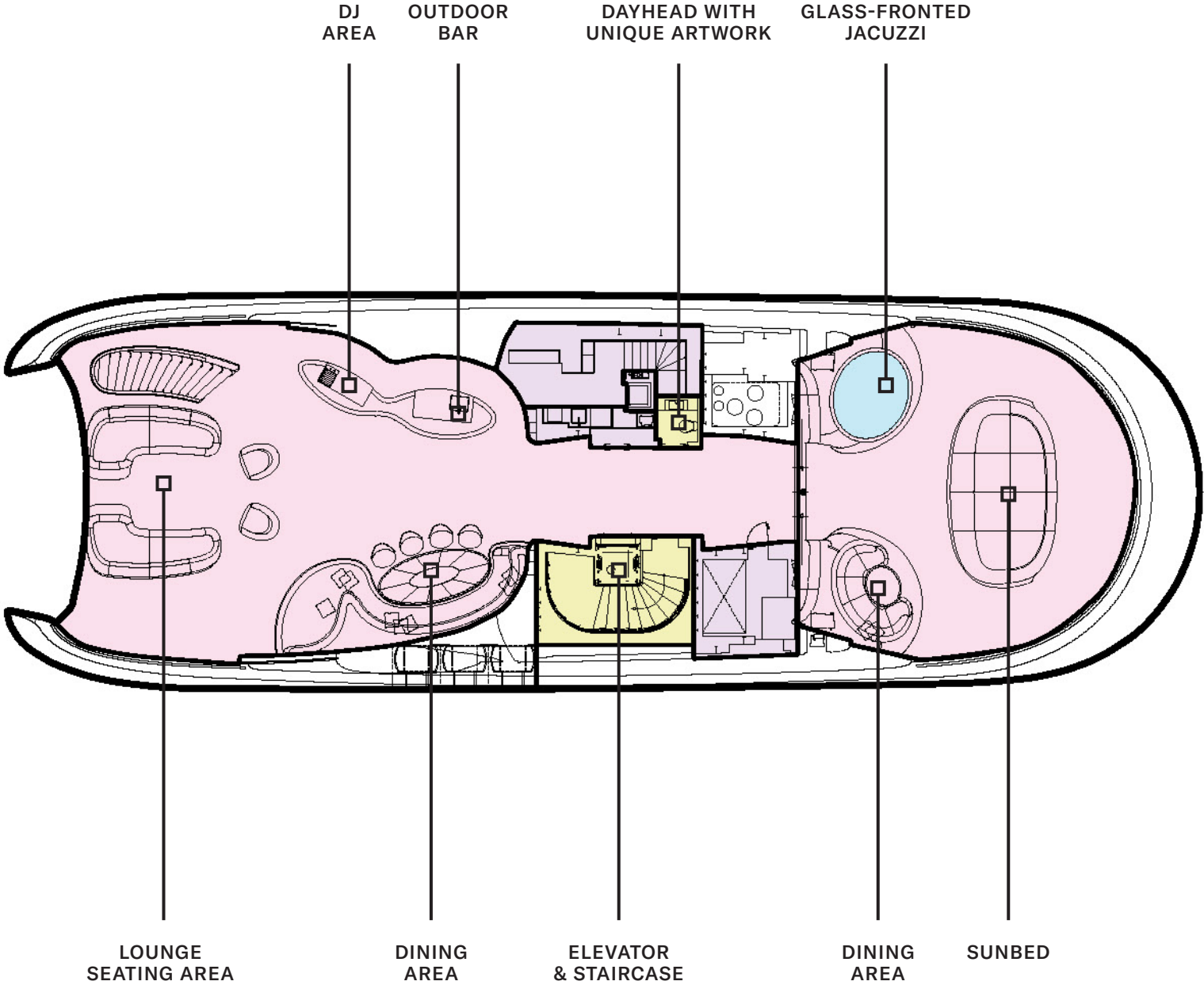
LOWER DECK

KEY

- DECK
- GUEST AREAS
- PRINCIPAL CABIN
- GUEST CABINS
- SUN DECK
- FITNESS & WELLBEING
- STAFF CABINS
- CREW AREAS

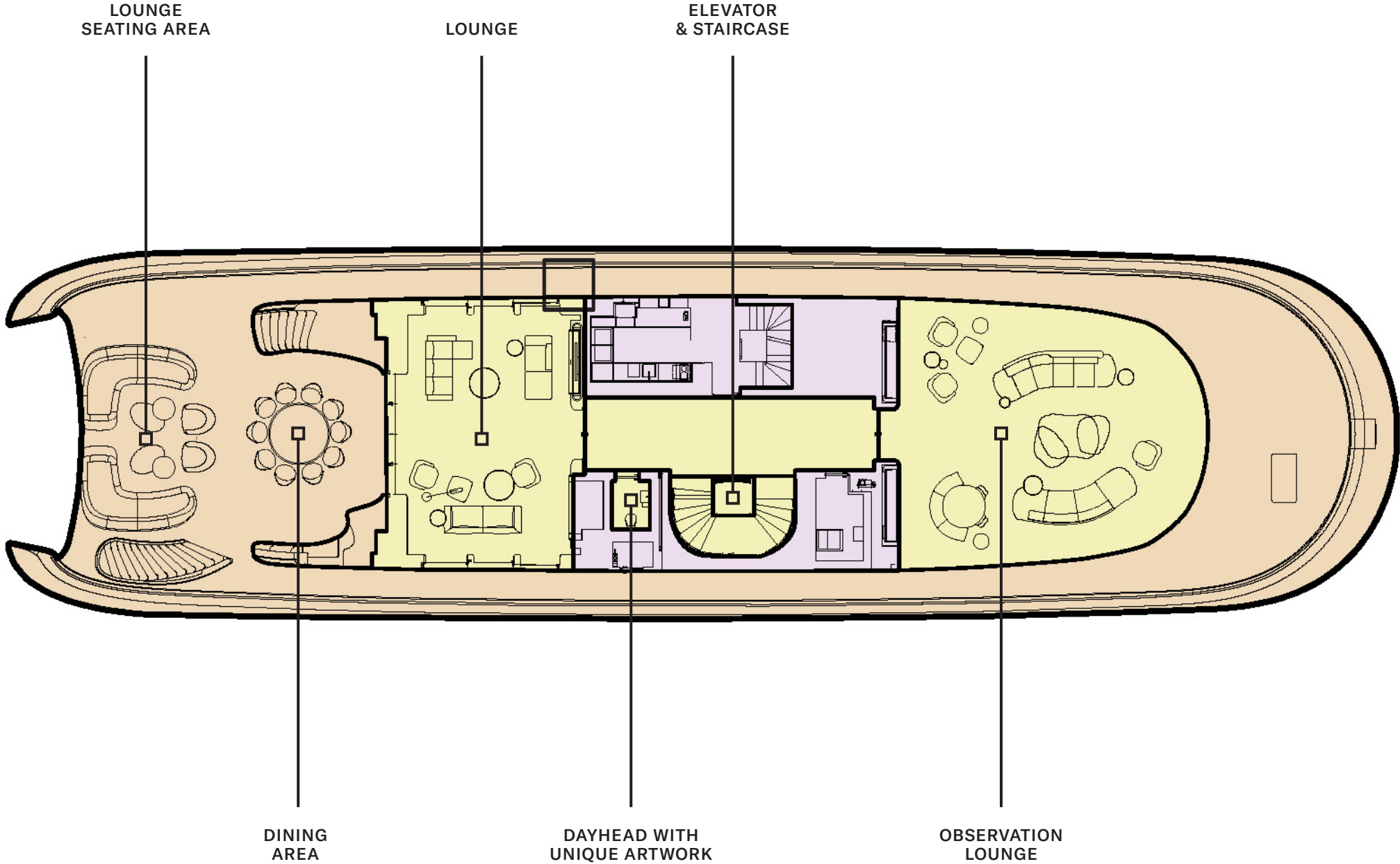


SUN DECK



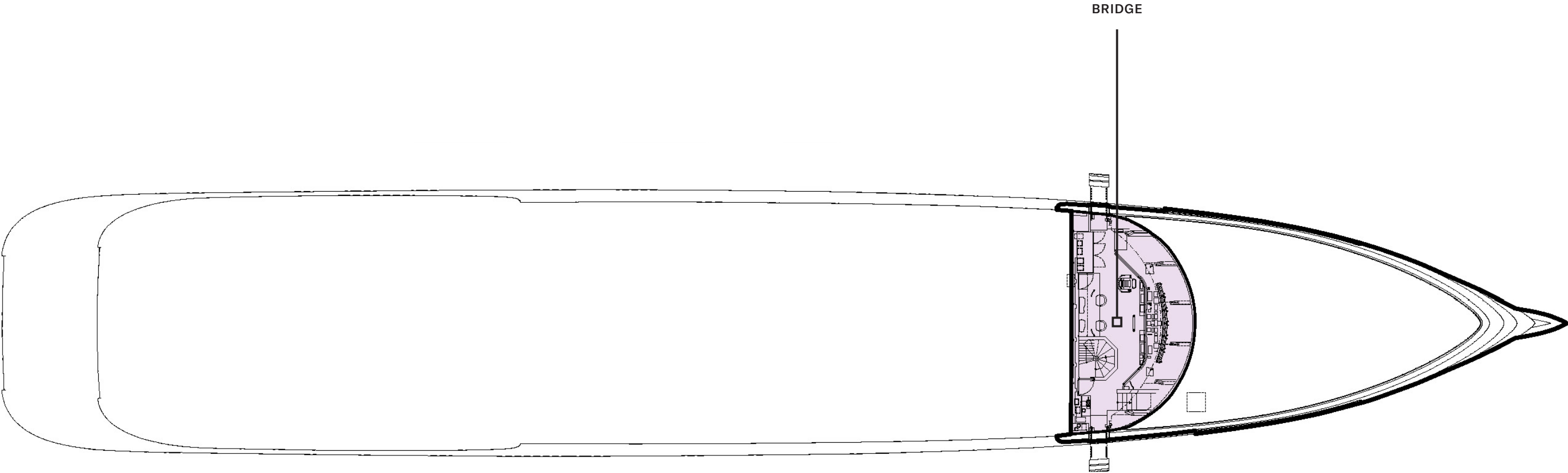
- KEY
- DECK
 - GUEST AREAS
 - PRINCIPAL CABIN
 - GUEST CABINS
 - SUN DECK
 - FITNESS & WELLBEING
 - STAFF CABINS
 - CREW AREAS

UPPER DECK



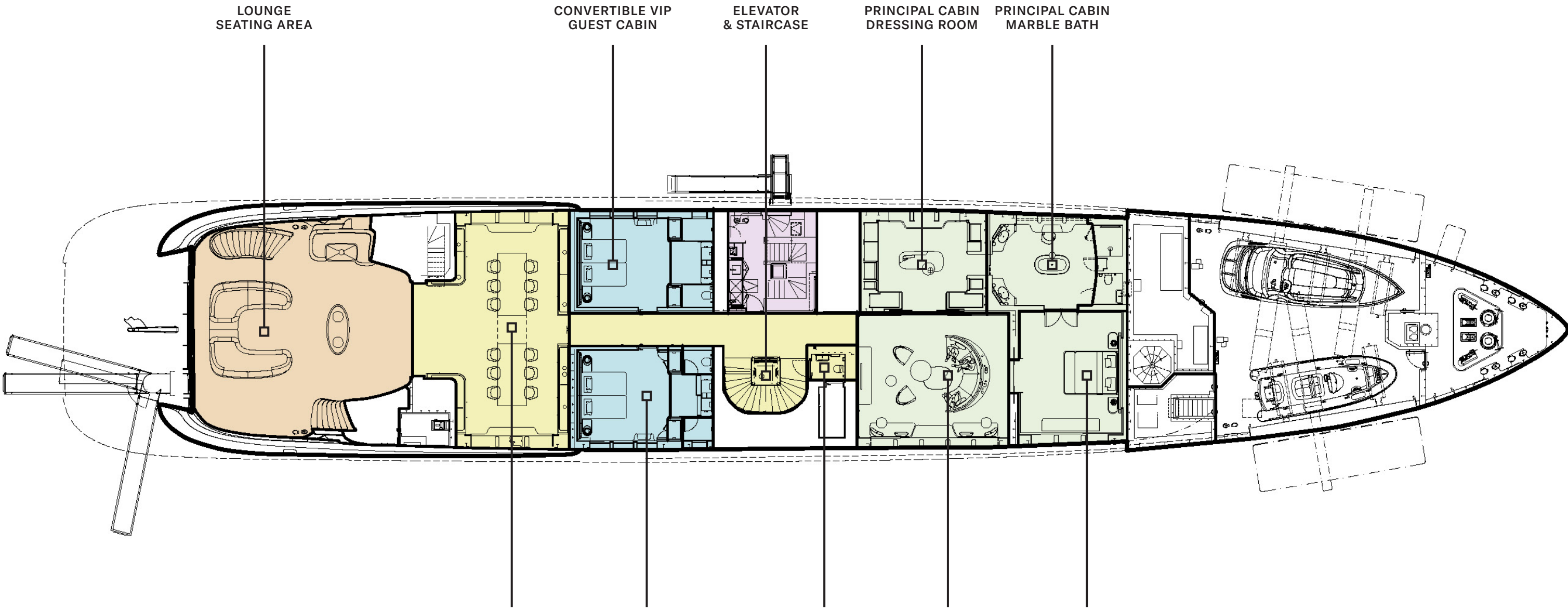
- KEY
- DECK
 - GUEST AREAS
 - PRINCIPAL CABIN
 - GUEST CABINS
 - SUN DECK
 - FITNESS & WELLBEING
 - STAFF CABINS
 - CREW AREAS

BRIDGE DECK



- KEY
- DECK
 - GUEST AREAS
 - PRINCIPAL CABIN
 - GUEST CABINS
 - SUN DECK
 - FITNESS & WELLBEING
 - STAFF CABINS
 - CREW AREAS

MAIN DECK



- KEY
- DECK
 - GUEST AREAS
 - PRINCIPAL CABIN
 - GUEST CABINS
 - SUN DECK
 - FITNESS & WELLBEING
 - STAFF CABINS
 - CREW AREAS

LOWER DECK



KEY

DECK

GUEST AREAS

PRINCIPAL CABIN

GUEST CABINS

SUN DECK

FITNESS & WELLBEING

STAFF CABINS

CREW AREAS

GYM

CONVERTIBLE GUEST CABIN

CONVERTIBLE GUEST CABIN

ELEVATOR & STAIRCASE

FOR CHARTER

KENSHO

