



KENSHŌ

FOR CHARTER

SPECIFICATION

Builder
Admiral Yachts

Delivery
2022

Length
75.2m (246'71")

Beam
12.8m (41'9")

Draft
3.4m (11'15")

12 Guests + 4 Staff
in 8 Cabins

Crew
23



KENSHŌ

THE ART OF LIVING

From swim deck to sun deck, Kenshō is committed to life on the water. Her owner, in love with the at-sea lifestyle, threw convention out of the window with her layout. Using asymmetry, integrated outside living areas and spaces in unexpected places, he created a space that was totally dedicated to life on the water, allowing the sea to be viewed – and enjoyed - at every turn.

Fun is promised on every level, from her swim deck with its gym, 6m swimming pool and high-octane collection of toys, to her sun deck, where everything from sunrise smoothies to sundowners can be enjoyed under a vast skylight. Inside, Kenshō's colossal interiors are calming and sophisticated. Six staterooms capture all the Zen of a Buddhist temple, with warm woods, paneling and genuine Asian-inspired touches from architectural design team Jouin Manku, all bathed in natural light from dawn until dusk. But the biggest attraction is always the sea, visible from every angle, and enjoyed at every moment.



KENSHŌ





INTERIOR LIVING

SENSATIONAL. ALL DAY, EVERYDAY.

Kenshō's interior spaces, connected by a central elevator and feature staircase, are made to feel even more spacious with lofty ceiling heights, large windows, and exceptionally wide walkways which connect the different living areas, rendering them almost open plan when doors are opened.

Designed not as a floating palace but as an at-sea retreat, the layout has been adapted to suit how the yacht will be used, with the main salon found not on the main deck as one might expect, but in a remarkable configuration of forward and aft living spaces on the upper deck, with spectacular forward views afforded through full length 180° windows.

Design firm Jouin Manku, renowned for their architectural transformations of some of the world's most prominent hotels and restaurants, has created a beautiful, yet absolutely livable interior in their first yacht project, combining warm woods, soft lighting and Asian-inspired detailing to inspire a space that is not only intricately decorated and expertly crafted, but is calming and perfectly balanced with life on the water.







INTERIOR LIVING DINING AREA



INTERIOR LIVING LOUNGE

KENSHO



INTERIOR LIVING LOUNGE





INTERIOR LIVING GYM

KENSHŌ



CABIN ARRANGEMENT

A MASTERCLASS IN RELAXATION

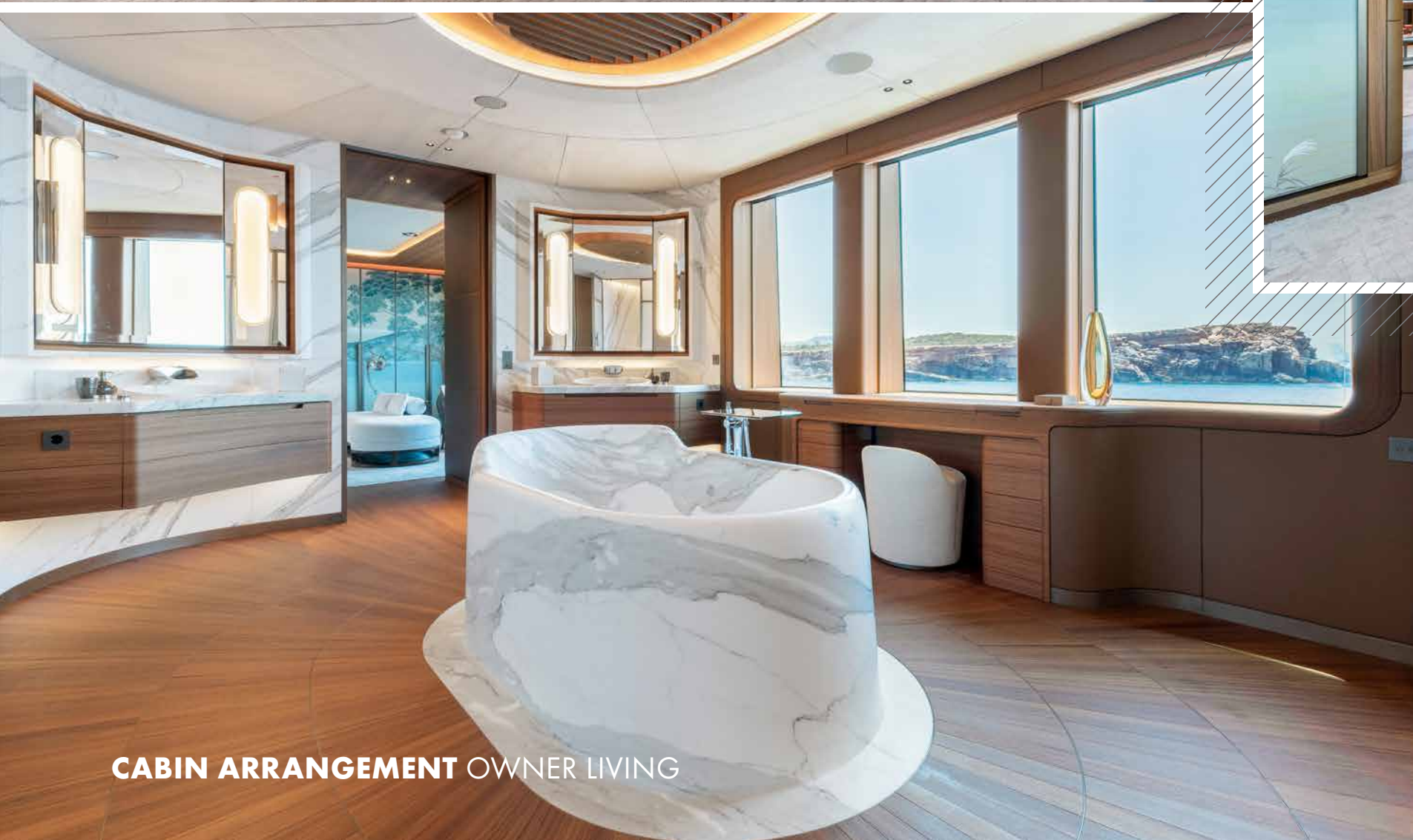
Six staterooms capture all the Zen of a Buddhist temple, with warm woods, paneling and genuine Asian-inspired touches from architectural design team Jouin Manku, all bathed in natural light from dawn until dusk.

The Master suite is an on-the-water retreat, with four interconnecting rooms: a lounge/media room with curved sofa, bedroom, dressing room and bathroom with a central tub, all of which are inspired by Asian myth and modern craftsmanship. Loft-like volume and views to port and starboard through full length opening windows create a feeling of space and tranquility.

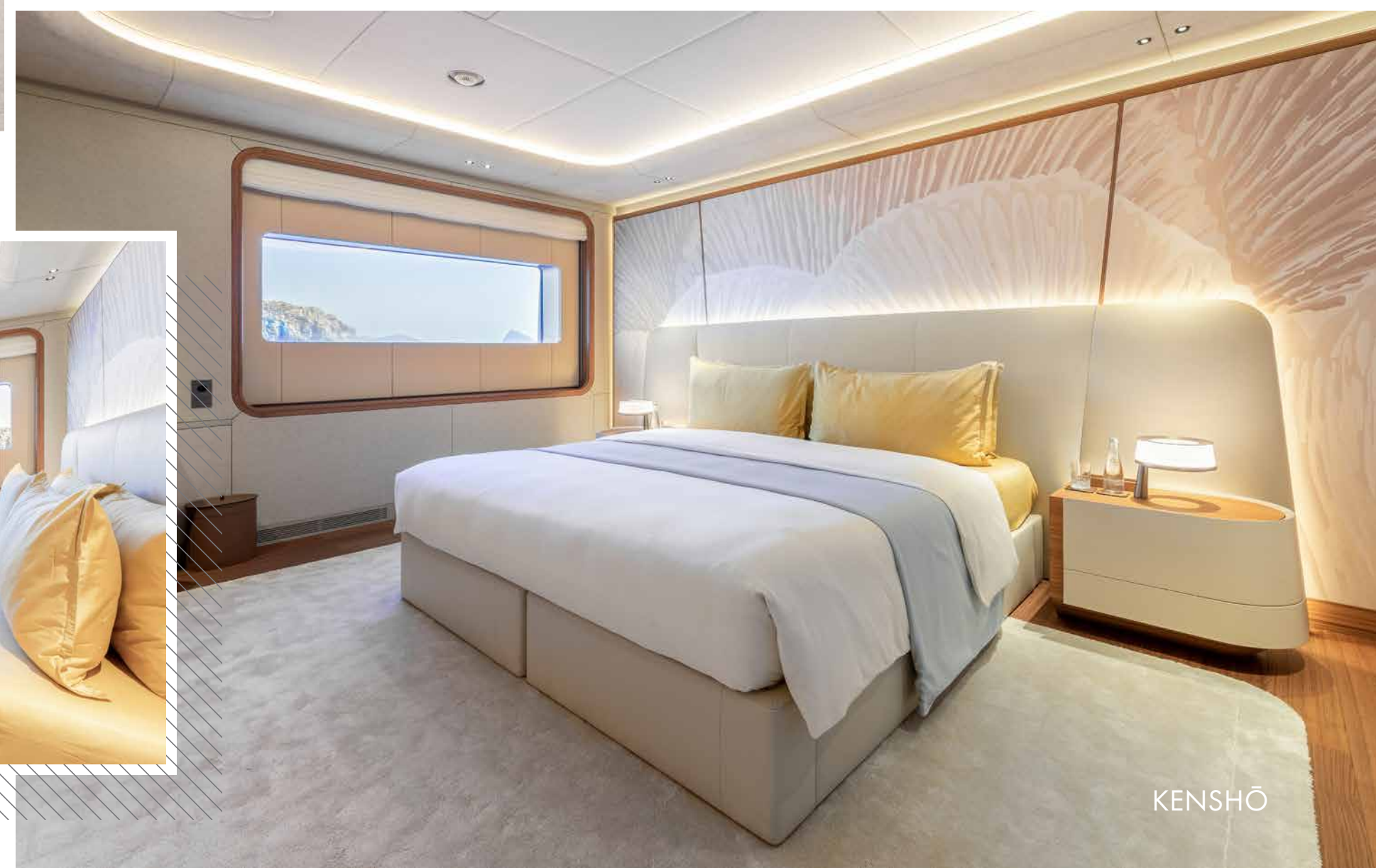
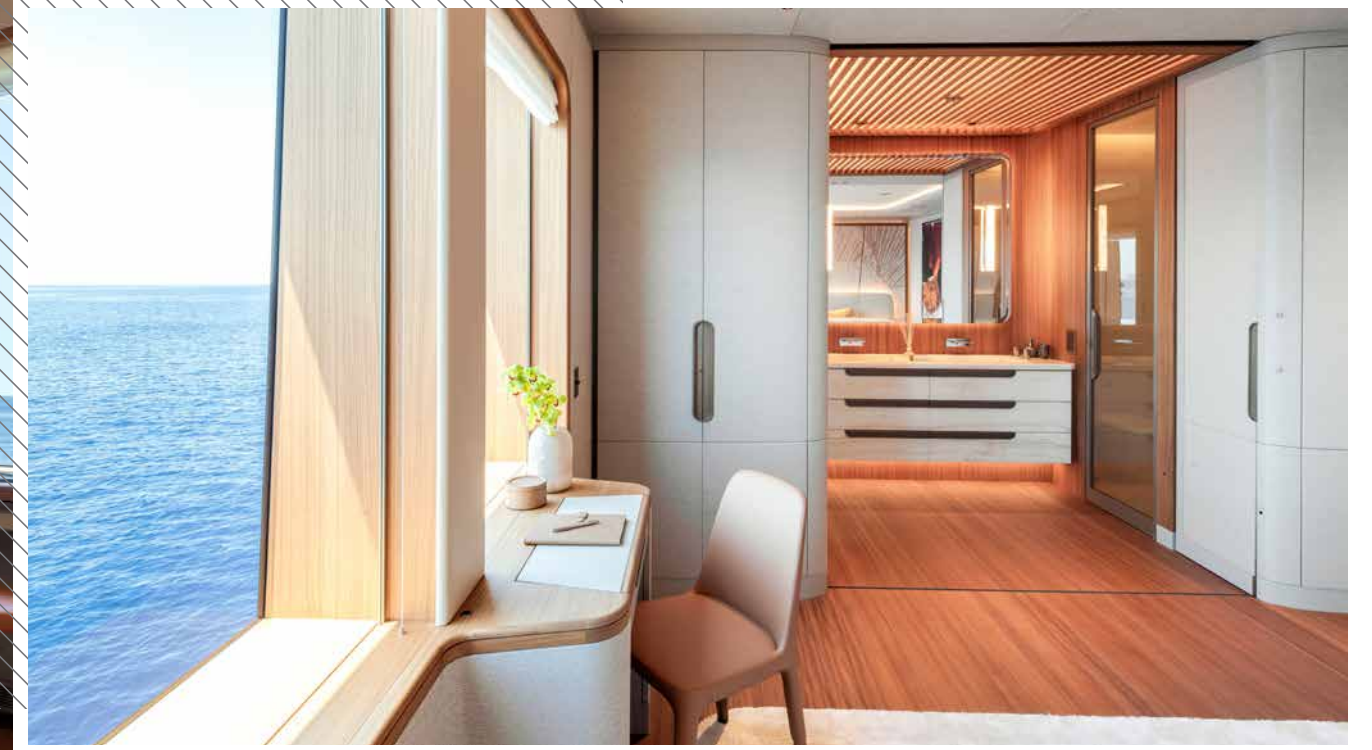


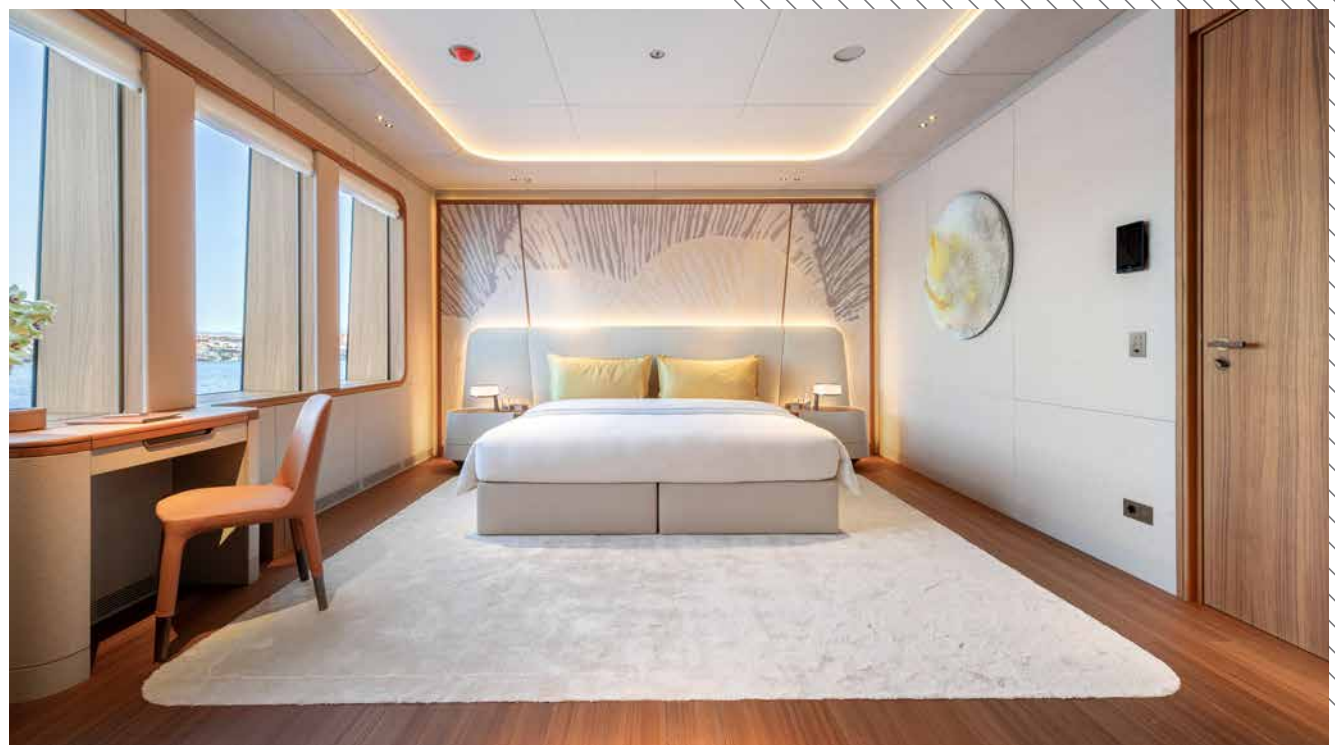


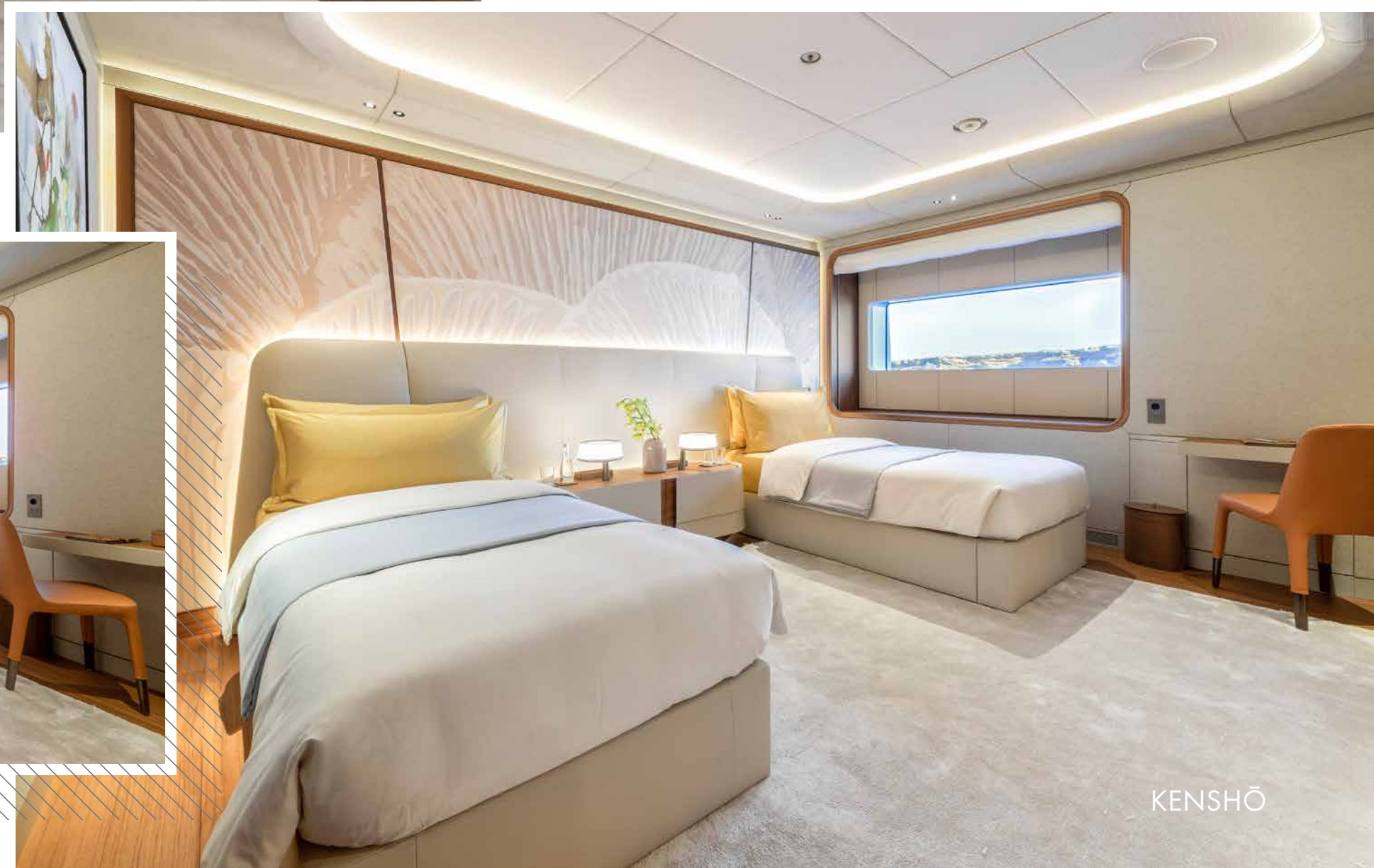
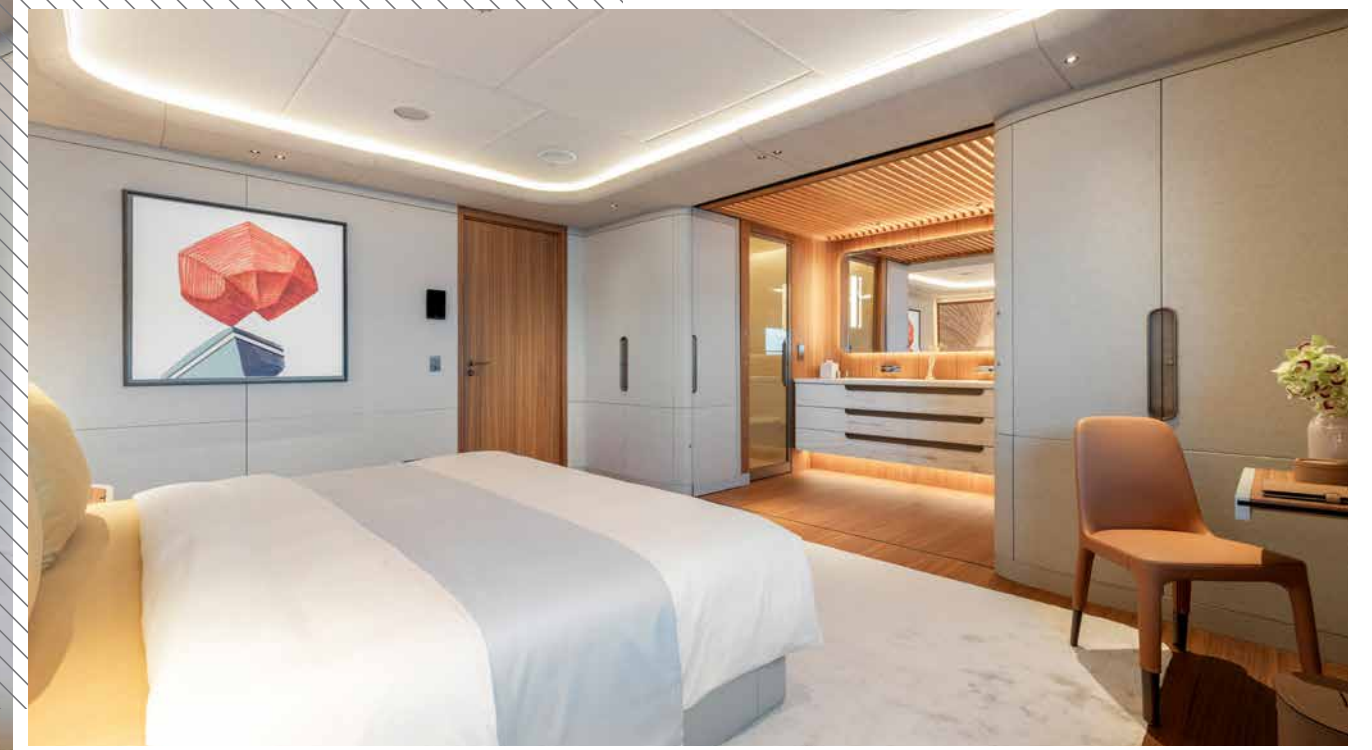
CABIN ARRANGEMENT OWNER STATEROOM



CABIN ARRANGEMENT OWNER LIVING









EXTERIOR LIVING

SENSATIONAL. ALL DAY, EVERYDAY.

Kenshō's exterior living spaces extend across four decks, from a sprawling swim deck with 6m glass-fronted pool on the lower deck, to a magnificent indoor-outdoor sun deck crowned by a unique skylight on the top.

From fitness to relaxation or entertaining, guests' needs are met by a variety of different areas, including a state-of-the-art gym on the swim deck, a secluded forward lounging area on the bow, a sheltered dining area on the upper deck and fully-equipped bar on the sun deck.

The sun deck, also served by the elevator, is a spectacular space, with forward and aft zones that are connected by one of the yacht's characteristic wide walkways. Glass windbreak doors can be shut, allowing total protection from the elements, or left open, allowing guests to enjoy the breeze – and uninterrupted views - through the centre of the yacht.



EXTERIOR LIVING SUN DECK

KENSHŌ



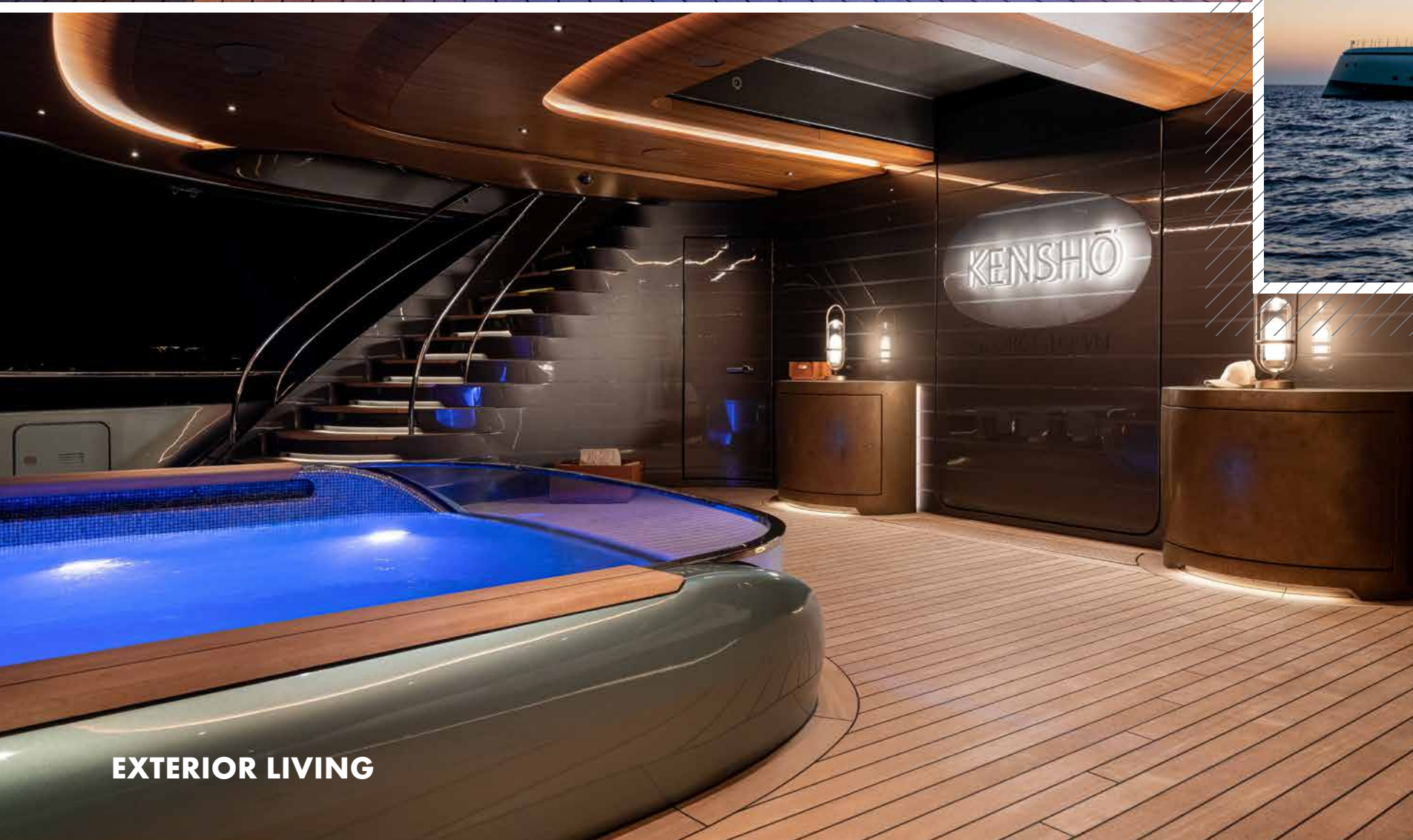
EXTERIOR LIVING SUN DECK







KENSHŌ
GEORGE TOWN



EXTERIOR LIVING

KENSHO

TENDERS & TOYS

ENDLESS FUN

Kenshō's custom 9-metre limousine tender not only shares the mothership's style and grace, but also features an integrated beach ladder on the foredeck, perfect for exploring harder-to-reach coves and bays. Her collection of E-foils, E-bikes, jet skis and more will keep you having fun in the sun all day long.







TENDERS & TOYS

KENSHO



TENDERS & TOYS

TENDERS & TOYS

WHAT'S IN THE TOYBOX

-
- 9m custom built limo
 - 7m solas tender
 - 2 jetskis
 - Ebikes
 - Efoils
 - Towables and inflatables

KENSHŌ



YACHT LAYOUT

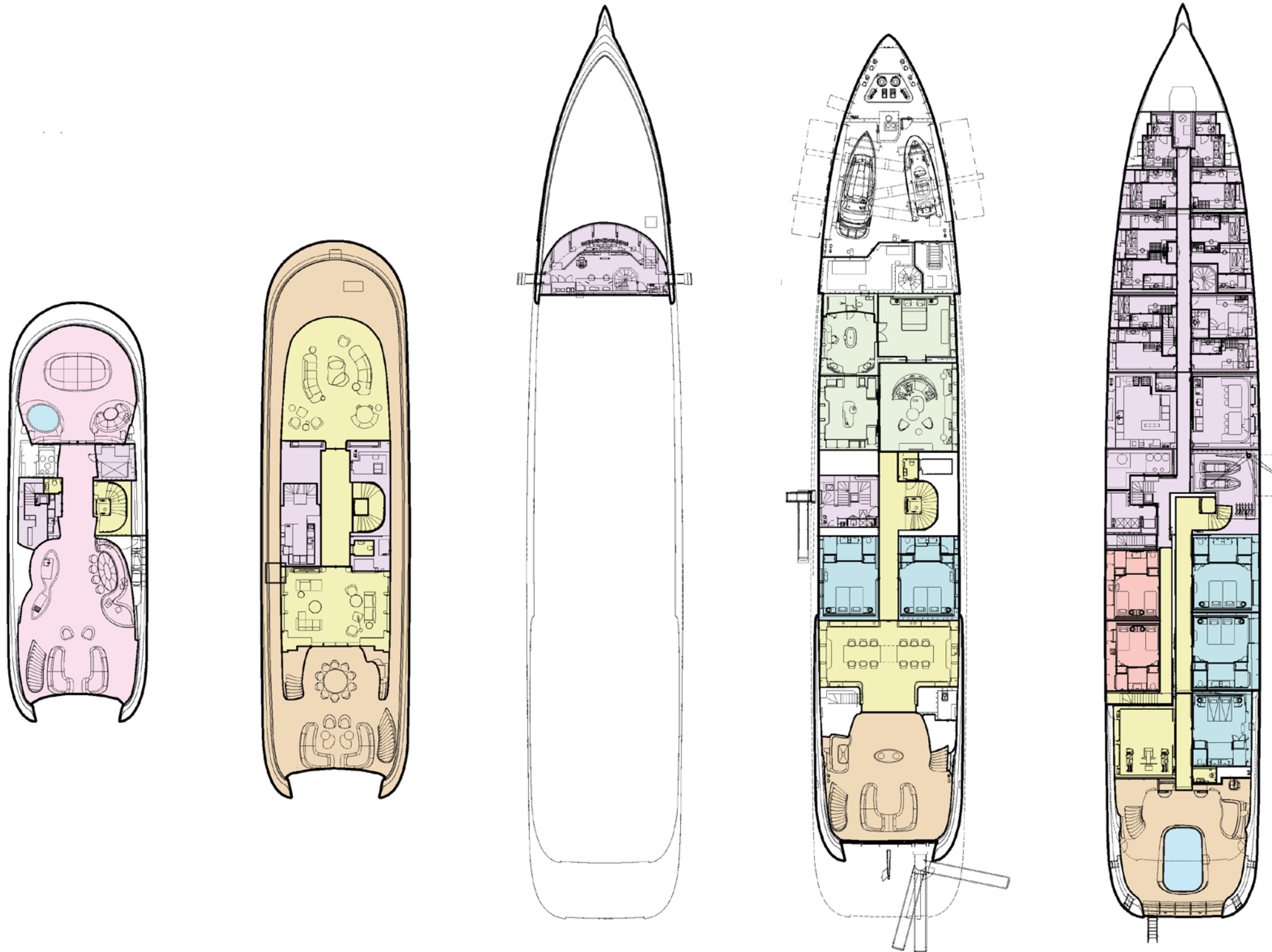
SUN DECK

UPPER DECK

BRIDGE DECK

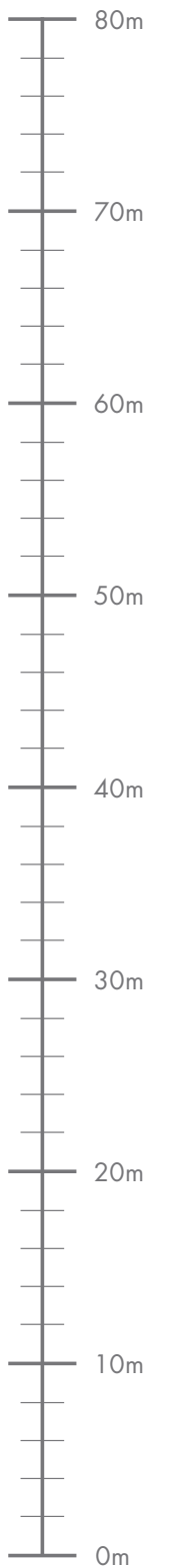
MAIN DECK

LOWER DECK



KEY

- Deck
- Guest Areas
- Master Cabin
- Guest Cabins
- Sun Deck
- Crew Areas





KENSHŌ

FOR CHARTER