



ILLUSION V

---

FOR CHARTER

# SPECIFICATIONS

---

Length	58m / 190'3" ft
Beam	10.8m / 35'35" ft
Draft	3.60m / 11'10" ft
Build	Benetti
Year	2014
Guests	12
Cabins	6
Crew	14
Max Speed	15 knots
Cruising Speed	12 knots



# MAIN FEATURES

---

- Beautiful contemporary Green & Mingarelli interior design
- Luxurious design touches like Lalique crystal, onyx, and silk throughout
- Silent; built with intentional noise and vibration reduction
- Versatile accommodation for up to 12 guests
- Lavish main deck master suite with private cinema room
- Full-beam lower deck VIP suite, can act as second master
- A choice of air-conditioned alfresco dining
- Sundeck Jacuzzi offering spectacular views
- Air-conditioned sundeck veranda with skylight
- Stylish beach club with full bar and guest shower
- Vast array of the latest water toys for all ages
- Amazing guest beach setup
- Onboard masseuse offering a wide range of complimentary treatments
- Long-standing Captains and professional charter crew



# INTERIOR

---

Illusion V's stunning interior designed by Green & Mingarelli is unquestionably luxurious and yet it is extremely comfortable and inviting.

Travertine, wood, parchment and several kinds of marble alternate with other more unusual materials like stingray, coconut weave, and mother of pearl.

The inlaid Lalique crystal adds yet another touch of elegance and luminescence, and the ivory leather ceilings complete the effect of space and light.

A majestic central spiral staircase connects all three of the interior decks.

The two beautiful saloons present a choice of relaxed lounge areas, games tables, and full bars – two of the six that can be found onboard. The main saloon also offers a wide screen TV and the upper saloon a wine cellar and humidor for cigars.

A notable characteristic throughout Illusion V's interior is the silence. Noise and vibration reduction was prioritised by the Benetti technicians, together with a specialised Danish company, and they succeeded admirably.







**INTERIOR** MAIN SALOON / MAIN DECK





**INTERIOR** UPPER SALOON / UPPER DECK

# GUEST ACCOMMODATION

---

Illusion V comfortably sleeps up to 12 guests across 6 luxurious cabins, with a sleeping arrangement of three double cabins and three twin cabins across two decks.

The full-beam master suite is the only cabin on the main deck and features its own private cinema room and a spacious bathroom that is entirely finished in onyx with carved marble handbasins. This too includes an enormous central shower, a beautiful underlit bathtub, and his-and-hers dressing rooms.

On the level below, the lower deck accommodation comprises of a full-beam VIP suite that could act as a second master cabin. Located amidships, the VIP suite takes full advantage of the (almost) eleven meter beam and offers the same exquisite finishings as found in the master suite above.

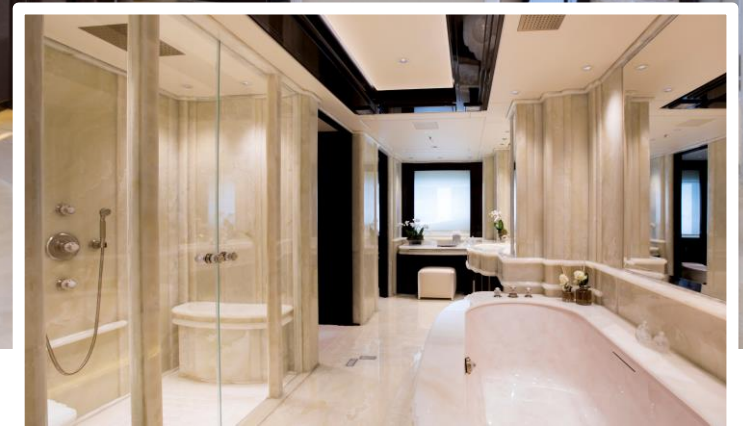
Four further guest cabins complete the accommodation on the lower deck; three twins and a final double cabin. All these cabins are generously sized, expertly laid out, and exquisitely furnished.







**INTERIOR** MASTER SUITE BEDROOM / MAIN DECK



ILLUSION 

INTERIOR MASTER SUITE BATHROOM / MAIN DECK



ILLUSION

INTERIOR MASTER SUITE CINEMA ROOM / MAIN DECK



**INTERIOR** VIP SUITE / LOWER DECK



**INTERIOR** DOUBLE CABIN / LOWER DECK



**INTERIOR** TWIN CABIN / LOWER DECK

# EXTERIOR

---

Set across four decks there is ample choice for guests to relax and enjoy their time onboard.

The sun deck is undoubtedly the most popular area. A large Jacuzzi laid with pebbles to create Illusion V's ubiquitous rose motif has a dramatic entrance of rustic travertine steps and is surrounded by sunpads. On this deck you can also find a full bar with BBQ, a large sofa, and sun-loungers.

Amidship on this top deck is a spectacular veranda housing a 12-seat dining table which can be sheltered from the wind (or the heat) thanks to double sliding-doors forward and aft. Even when indoors guests can enjoy a view of the starry heavens through the six window skylight.

A further choice for guest dining can be found on the upper deck aft with its large dining table comfortably seating 14 guests, as well as another full bar and service area and relaxing sofas.

The main deck aft is spacious and its c-shaped sofa, intentionally backed by raised storage to grant greater privacy, comfortable lounge chairs, and corner bar welcome guests when they step onboard.

Finally there is a stylish beach club with a full bar and guest shower on the lower deck, and a large swim platform giving guests direct access to the water.







**EXTERIOR** SUN DECK / SUN LOUNGERS & SEATING



**EXTERIOR** SUN DECK / VERANDA DINING (SEATS 12)



ILLUSION

EXTERIOR SUN DECK / JACUZZI & BAR

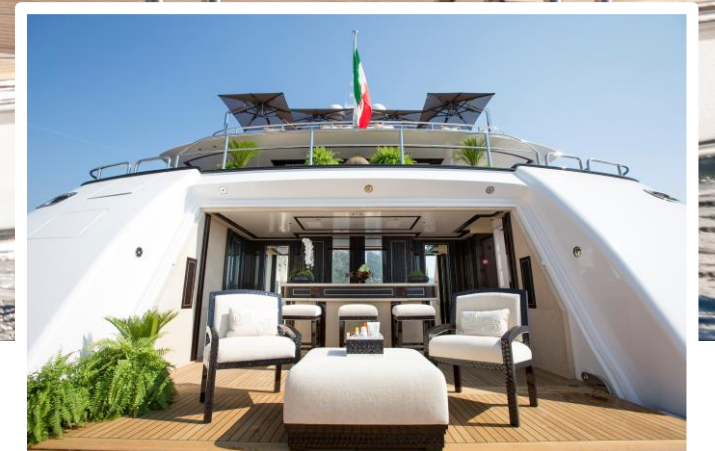


**EXTERIOR** UPPER DECK / DINING (SEATS 14)



ILLUSION

EXTERIOR MAIN DECK



ILLUSION

**EXTERIOR** BEACH CLUB / LOWER DECK

# TENDERS & TOYS

---

## Tenders:

- 9.5m / 31ft Custom Novurania Chase tender (12pax)
- 7.5m / 24ft Dariel DT7.5 Jet tender (12pax)

## Water Toys:

- 2 x Custom SeaDoo RXT 230 Jetskis with dock
- 3 x Seabob F5S
- Jetsurf Adventure DFI
- FunAir Jungle Jo with climbing wall
- Aquaglide splash mat
- Variety of towables (chariot, solo, flyers)
- 2 x Ronix wakeboards
- 2 x Skurfboard
- Waterskis (pro and beginner)
- SUPs
- Snorkelling gear
- SCUBA diving gear (various sizes)
- 2 x spearguns
- Fishing rods (standard & trolling)

## Gym Equipment:

- Keiser M3i stationary exercise bike
- Skylon S Elliptical Cross Trainer
- 1090 Dumbbells & kettle bells (selection of weights)
- Weighted jump rope
- TRX suspension training system
- Yoga mats

## Beach Setup:

- Private cabana
- Beach games

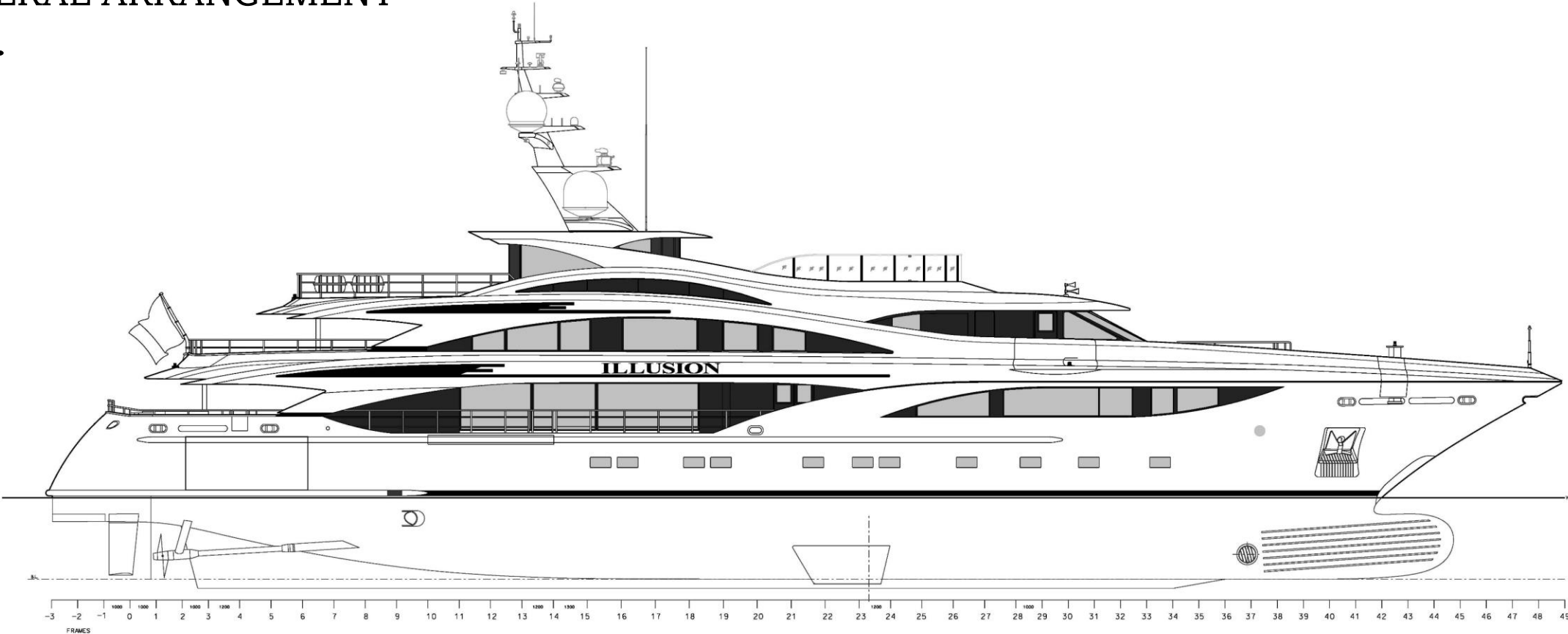




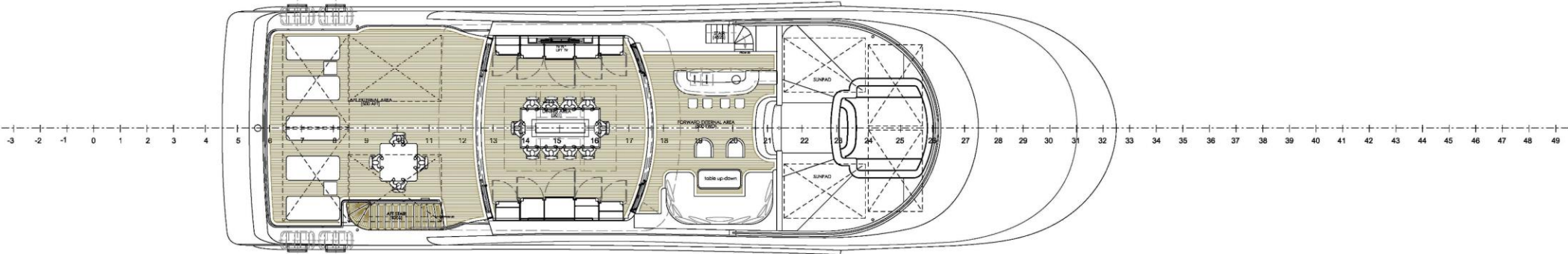


**LIFESTYLE** WATERSPORTS & ACTIVITIES

# GENERAL ARRANGEMENT

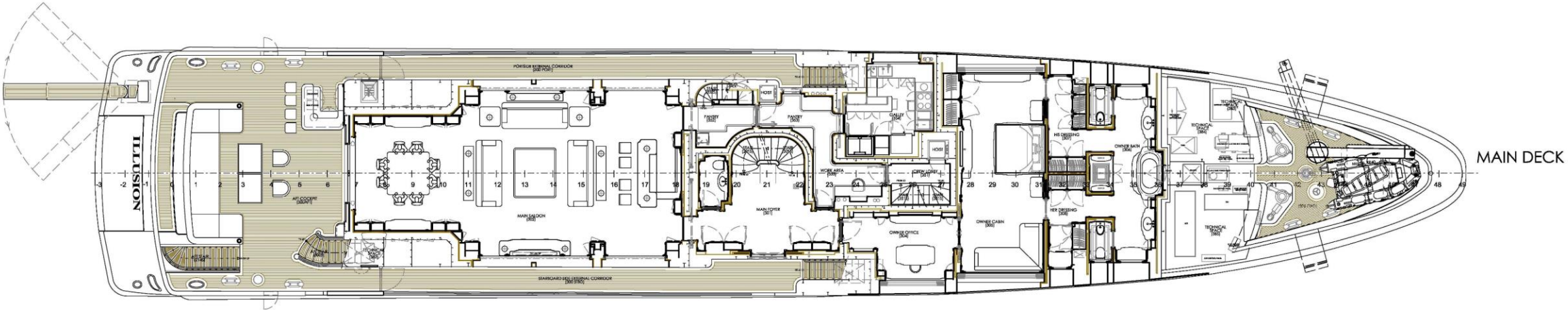
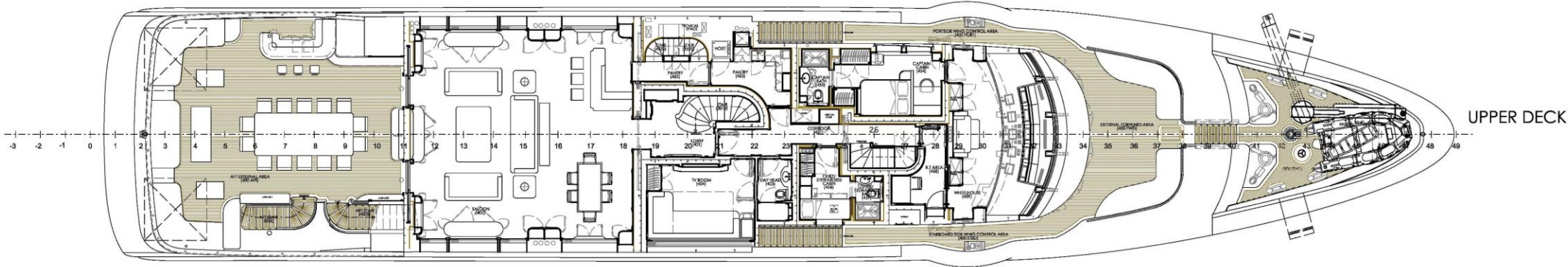


SIDE VIEW

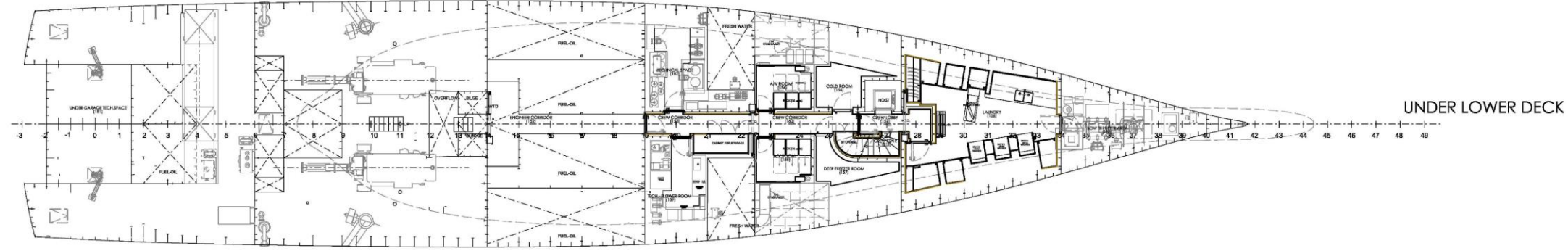
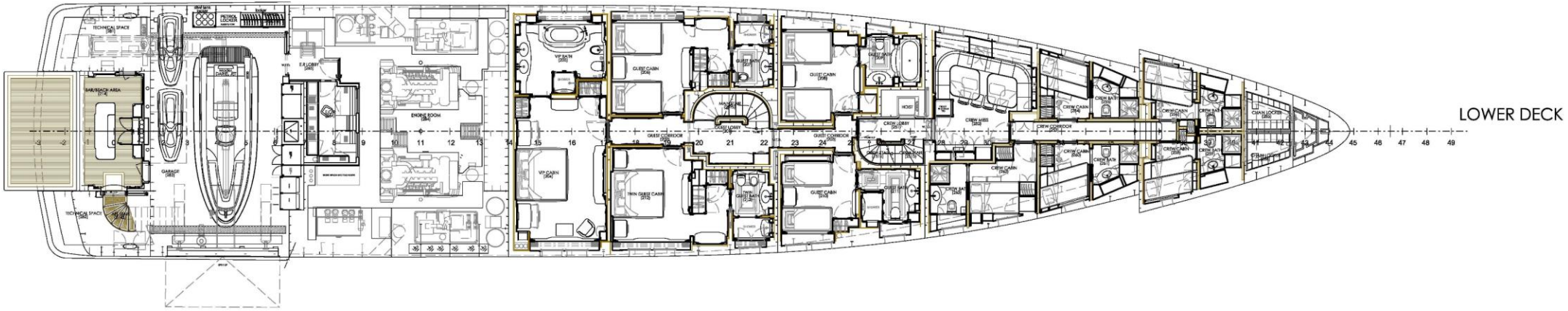


SUN DECK

# GENERAL ARRANGEMENT



# GENERAL ARRANGEMENT





# ILLUSION V

FOR CHARTER