



HOSPITALITY

164' 1" (50m) | Westport | 2011

HOSPITALITY

BASIC SPECIFICATIONS

BUILDER

Westport

BEAM (ft/m)

30' 8" (9.34m)

CRUISING/MAX SPEED

15 / 25 Knots

CREW

11

RANGE

5107 nm

LENGTH (ft/m)

164' 1" (50m)

DRAFT (ft/m)

7' 7" (2.31m)

FUEL CONSUMPTION

132 US Gall/Hr

ACCOMMODATION

12 guests in 7 cabins

INTERIOR DESIGNER

Donald Starkey

BUILT/REFIT

2011 / 2021

GROSS TONNAGE

492 GT

ENGINES

2 x MTU 16V 4000 M90 3650
hp

ARRANGEMENTS

1 Single, 4 Double, 1 Triple, 1
Twin

HOSPITALITY

KEY FEATURES

- › PRIVATE OWNER'S SUITE ON UPPER DECK WITH PRIVATE BALCONY
- › EXCELLENT SELECTION OF WATER TOYS INCLUDING FLYBOARD, WATERSLIDE, SEABOBS, SUPS AND MORE
- › VIP CABIN ON MAIN DECK WITH LARGE MARBLE-CLAD ENSUITE
- › FULL GYM WITH STATE OF THE ART EQUIPMENT, SINGLE BED AND PULLMAN
- › 7 STATEROOMS OFFER FLEXIBLE ACCOMMODATIONS + LIBRARY THAT HAS BEEN CONVERTED TO A GYM
- › UPDATED INTERIOR AND EXTERIOR IN 2021
- › VAST EXTERIOR DECK SPACES GREAT FOR ENTERTAINING
- › 2020 FREEMAN 42LR TOWED-TENDER, E-FOILS, JET SURF ADVENTURE DFI PLUS, 3X WAVERUNNERS - 2X SEA-DOO GTX 300 LIMITED 2020, 1X YAMAHA FX CRUISER SVHO 2020

HOSPITALITY

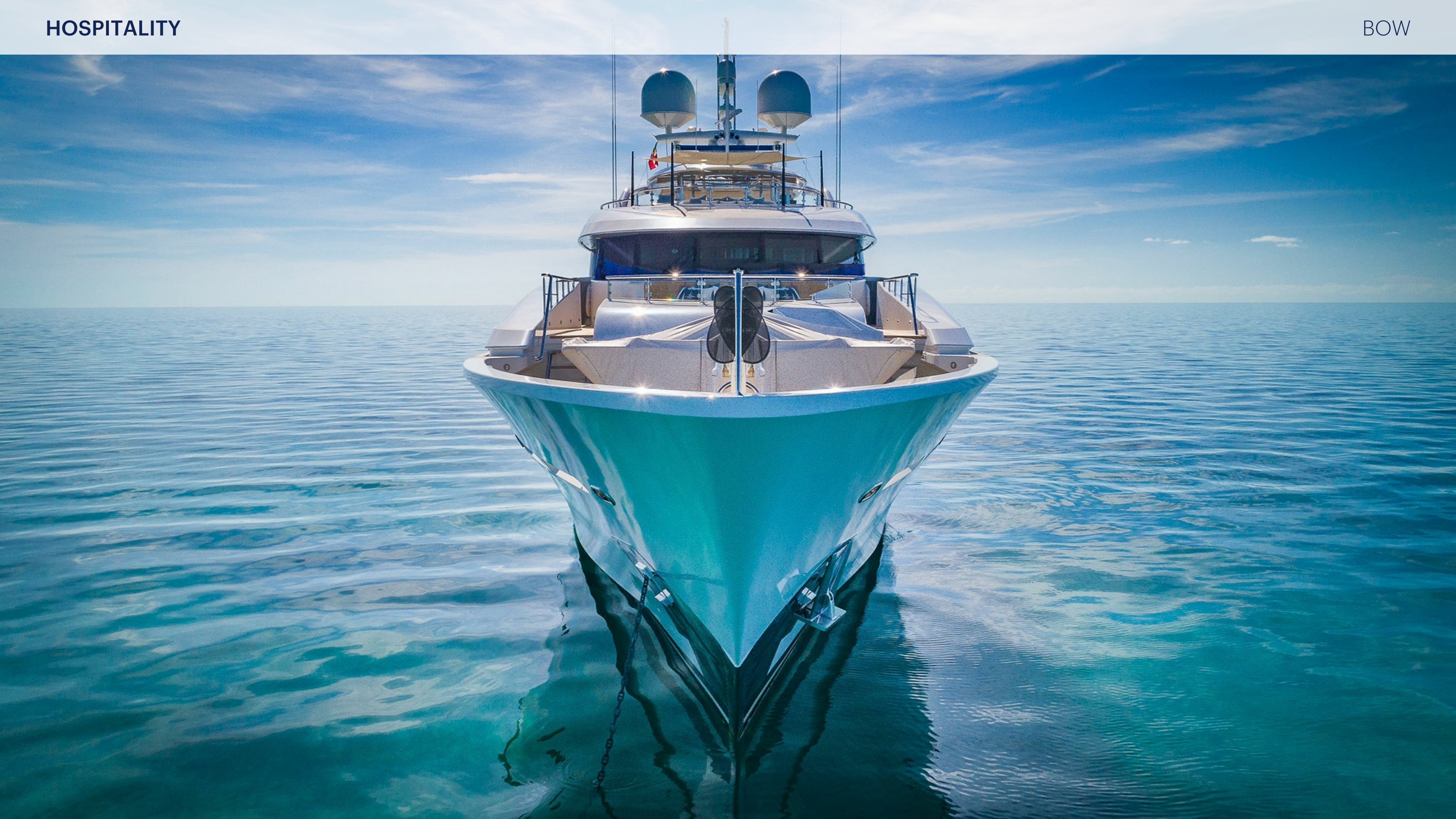
WATER TOYS

- › 1X FREEMAN 42FT DUAL HAUL LONG RANGE TENDER FOUR 400HP OUTBOARD ENGINES 1 X BRIG 17 FT INFLATABLE TENDER 100HP OUTBOARD ENGINE
- › 1X YAMAHA FX CRUISER SVHO WAVE RUNNER 3X SEABOBS
- › 2X SOLID PADDLE BOARDS - SUP
- › 2X SKURFBOARDS - BONZAI MODELS
- › 1X WATERSKIS - O'BRIEN
- › 2X E-FOIL
- › 1X FLYBOARD - ZAPATA
- › 2X AQUABANAS PLATFORMS
- › 1X WAKEBOARD (MENS) - HYPERLITE
- › 2X ROCKIN MARBLE INFLATABLE TUBE - SPORTSSTUFF 1X INFLATABLE TUBE - AIRHEAD REVOLUTION
- › 2X SEA-DOO GTX 300 LIMITED WAVE-RUNNERS
- › 1X WATER SLIDE
- › 1 X BOTE 10FT INFLATABLE HANGOUT WATER HAMMOCK / POOL
- › 1X WAKEBOARD (WOMEN'S) - HYPERLITE 1X WAKESKATE - RONIX
- › 1X KITESURF TRAINING KITE - OZONE

HOSPITALITY

WATER TOYS

- › 1X KITE - PRISM
- › 1X FOOTBALL
- › FISHING GEAR - BOTH TROLLING AND DEEP DROP
- › 20X SNORKEL SETS - CRESSI & OZONE
- › 1X RUGBY BALLS
- › SPEAR FISHING GEAR
- › 1X SOCCER BALL - NIKE
- › 1X FRISBEE



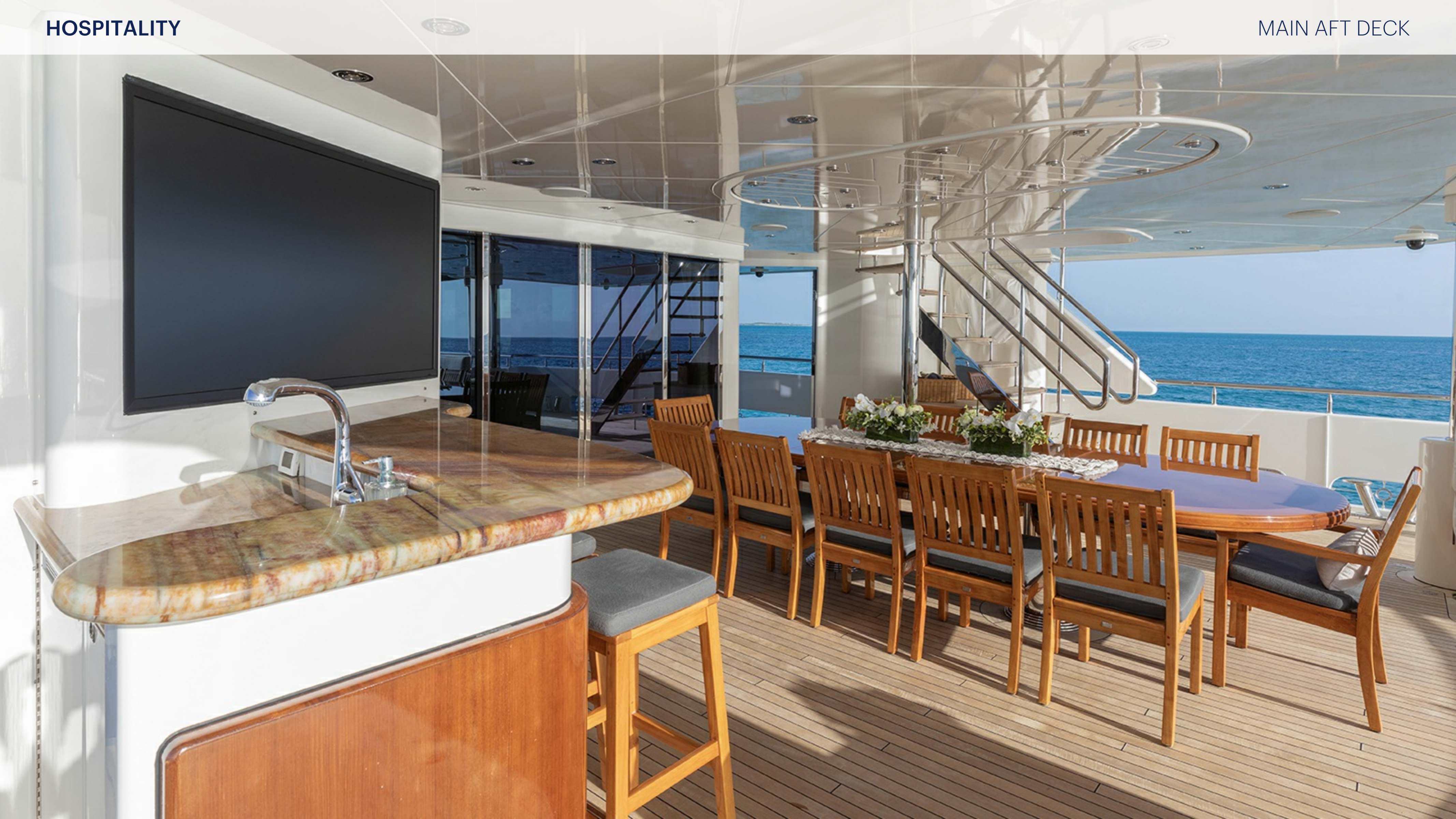
HOSPITALITY



































































































































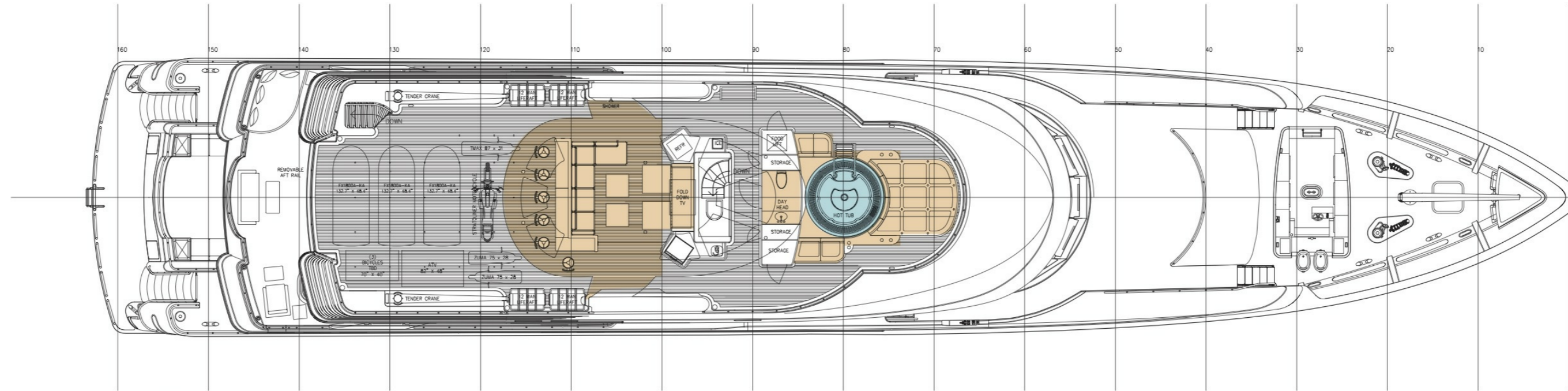




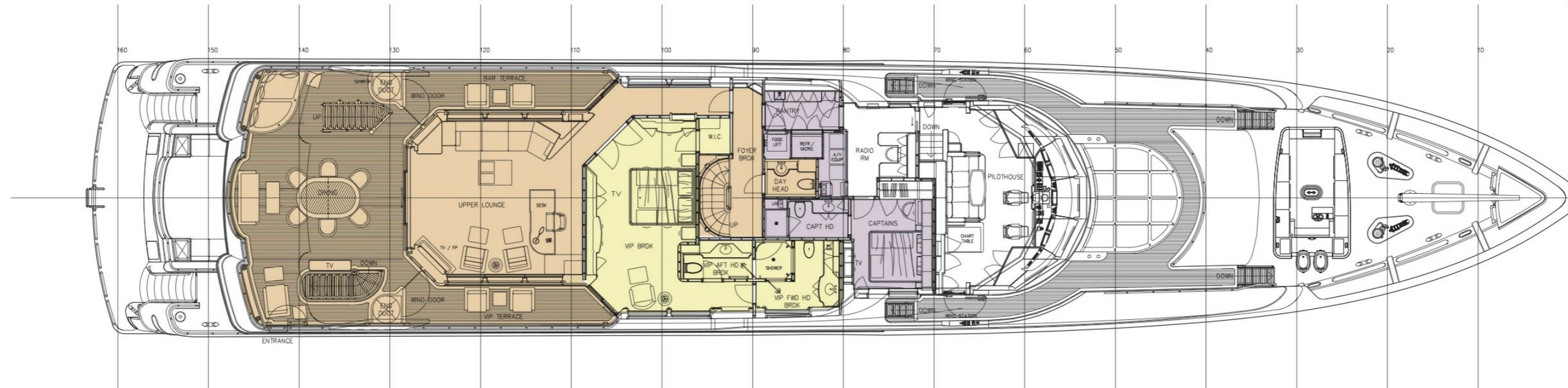








SUN DECK



BRIDGE DECK

- STATEROOMS
- JACUZZI
- GUEST COMMON AREAS
- CREW AREAS/CABINS
- ENGINE ROOM

02-09-11	BAK	FINAL UPDATES
PROPERTY OF WESTPORT SHIPYARD INC. ©		
000.001-5008	DS	A
000.001-5008	14-04-03	SCALE: 1/8" = 1'-0"
5008		

NOTE: SOME NON-STANDARD FEATURES ARE SHOWN

	WESTPORT 164' MOTOR YACHT		YARD RefNo
	<small>The Studio 2 Richmond Road, Marshm Malden, TX 77131 TEL: +44(0)20 8569 9921 FAX: +44(0)20 8569 9962 Email: info@dsdesigns.co.uk</small>		PROJ. No. 5208
YACHT INTERIORS AND DESIGN CONSULTANTS	PROFILE AND ARRANGEMENT	SCALE 1 : 96	DATE 14/04/03
THIS DRAWING IS PROTECTED BY COPYRIGHT AND MUST NOT BE REPRODUCED WHOLLY OR IN PART WITHOUT THE WRITTEN PERMISSION.			WPSY DWS No. 000.001-5008

