



ELA

163' 5" (49.8m) | Heesen | 2021

ELA

BASIC SPECIFICATIONS

BUILDER

Heesen

BEAM (ft/m)

29' 7" (9m)

CRUISING/MAX SPEED

12 / 19.5 Knots

CREW

9

RANGE

3750 nm

LENGTH (ft/m)

163' 5" (49.8m)

DRAFT (ft/m)

6' 11" (2.1m)

FUEL CONSUMPTION

200 Liters/Hr

ACCOMMODATION

12 guests in 6 cabins

INTERIOR DESIGNER

Cristiano Gatto Design

BUILT/REFIT

2021 / --

GROSS TONNAGE

499 GT

ENGINES

2 x MTU 12V 2000 M72

ARRANGEMENTS

ELA

KEY FEATURES

- › LARGE EXTERIOR DECKS
- › ZERO SPEED STABILIZERS
- › TOWED TENDER
- › GYM
- › JACUZZI
- › SAUNA
- › CRISTIANO GATTO DESIGN INTERIORS
- › SIX STATEROOM LAYOUT, ACCOMMODATING 12 GUESTS

ELA

WATER TOYS

- › 7M RIB FJORD TOWED TENDER
- › 2 X HOBIE MIRAGE ITREK 11
- › 2 X SEA DOO GTX 300 LTD JETSKIS
- › DOUBLE DEPTH MECHANICAL/SUBMERSIBLE SWIM PLATFORM
- › 3 X F5 SEABOBS
- › 1 X HOBIE MIRAGE ITREK 14
- › 2 X SCHILLER BIKES
- › 1 X FLITEBOARD E-FOIL
- › 2 X RED RIDE STAND-UP PADDLE BOARDS
- › 14 X CRESSI PRO DIVE PACKAGES



















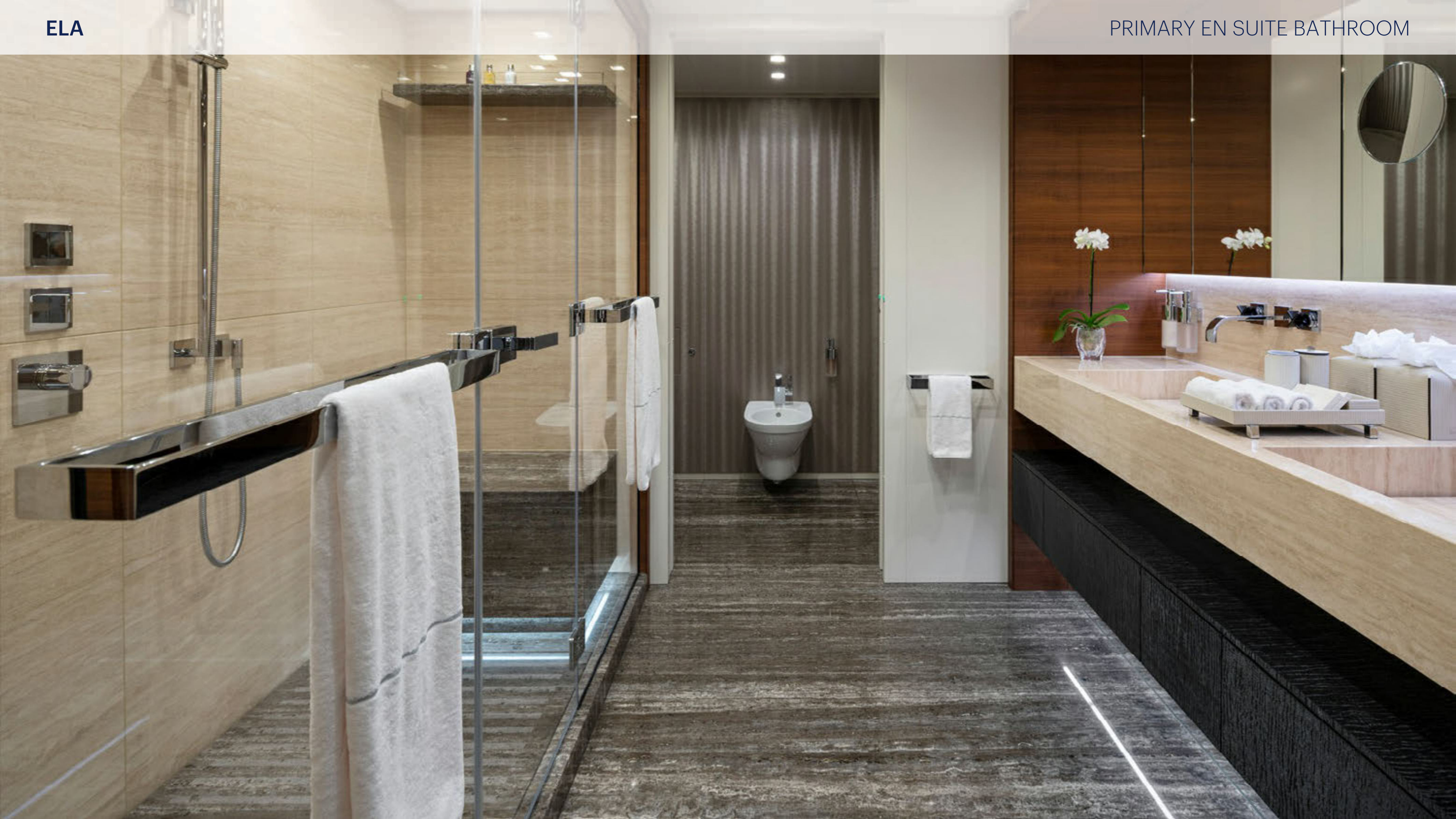




























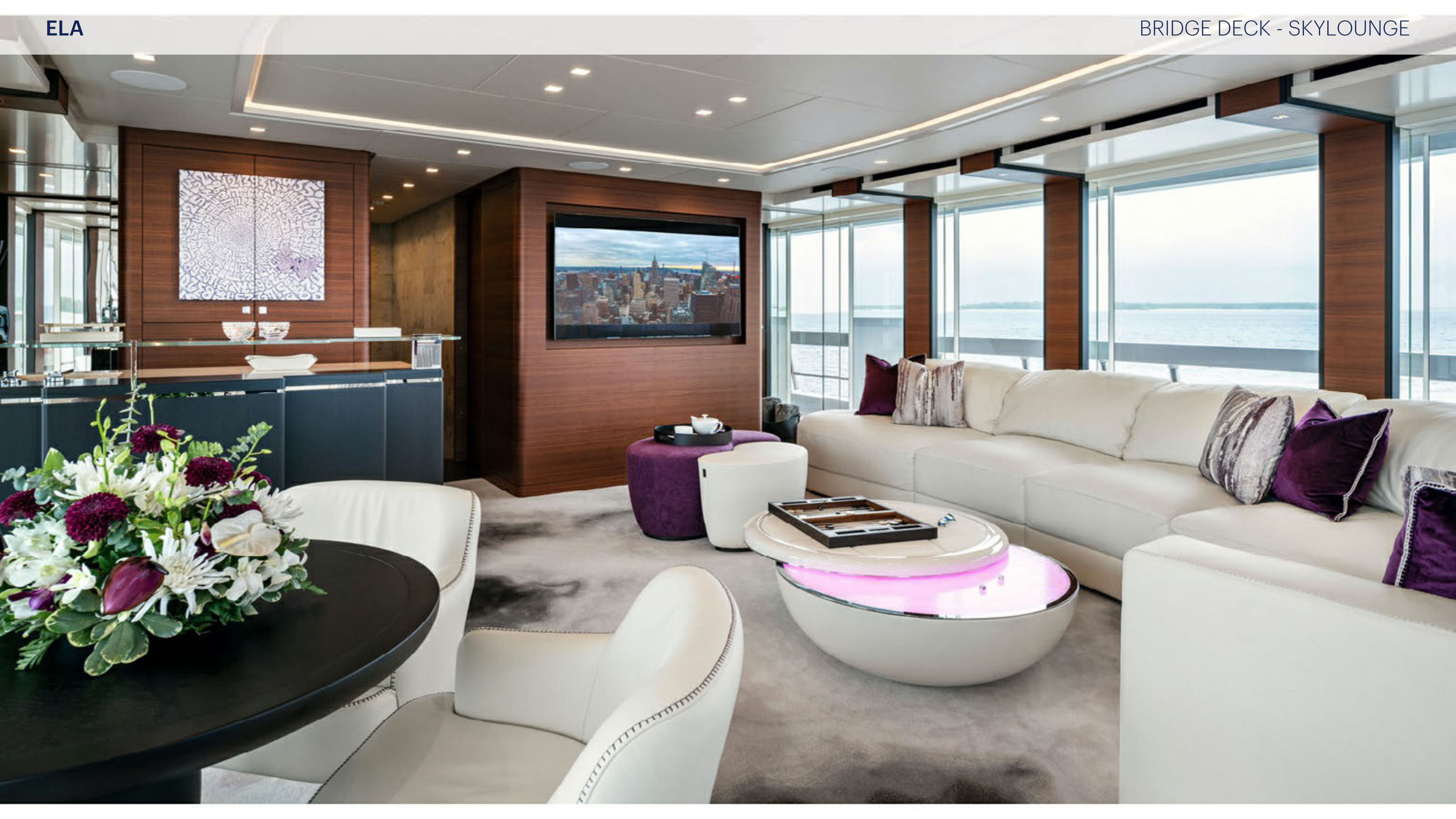














Stack of books including:
- WHITE
- ANDREW ANKIN INTERIOR DESIGN REVUE VOL. 19
- ANDREW ANKIN INTERIOR DESIGN REVUE VOL. 24
- Orchid
- MADE WONDERS























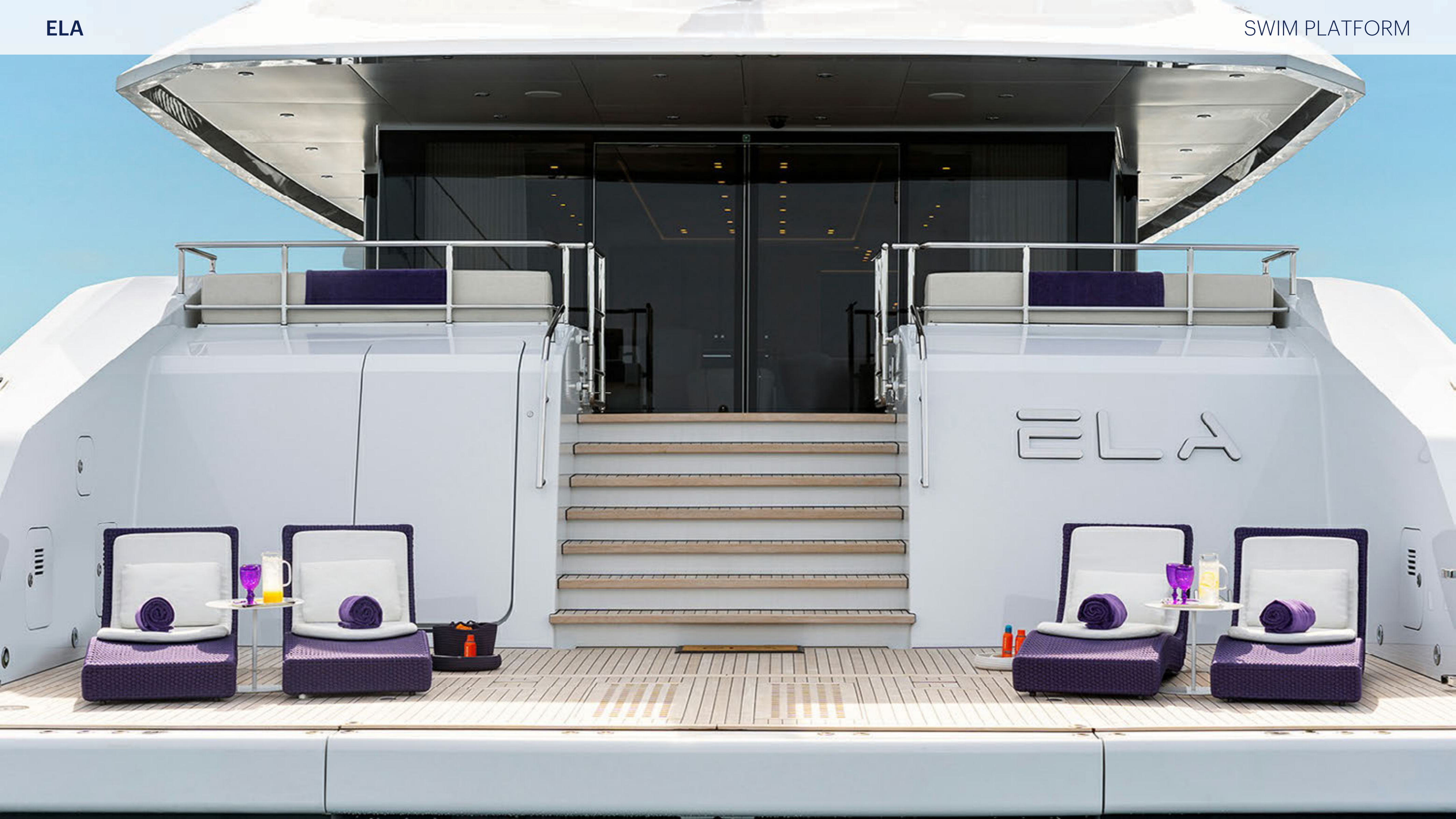
ELA

HYDRAULIC SWIM PLATFORM



ELA

SWIM PLATFORM



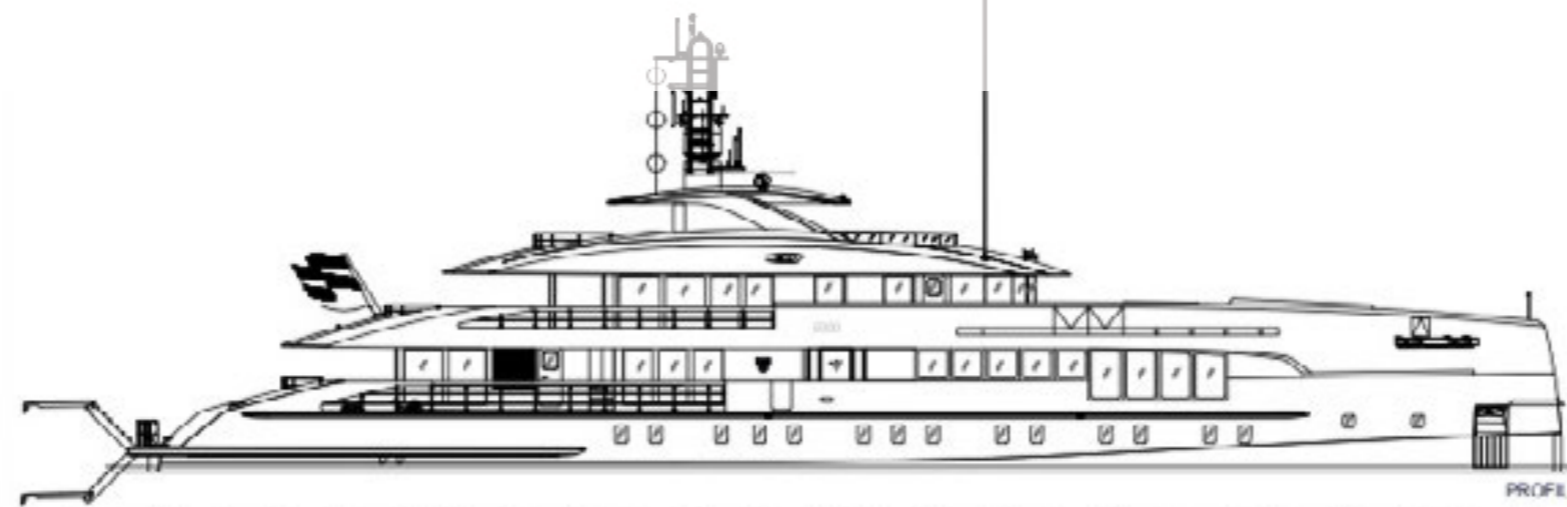




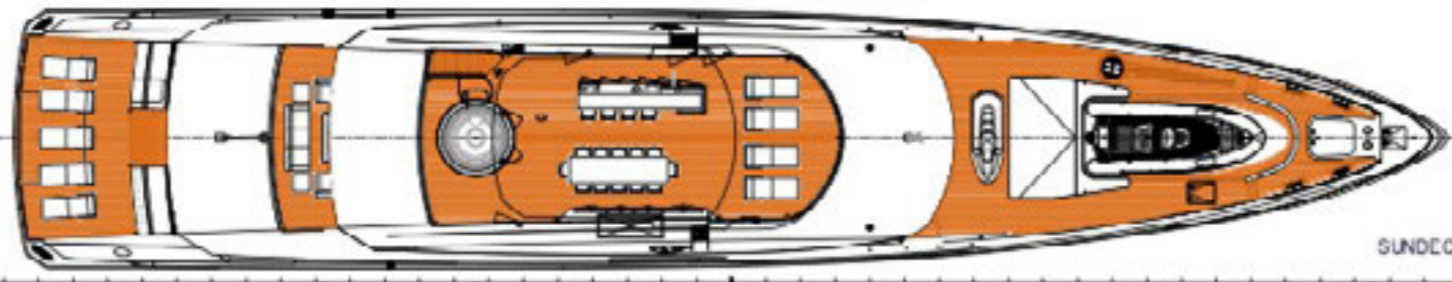








1 2 3 4 5 6 7 8 9 10 11 12 13 14 15 16 17 18 19 20 21 22 23 24 25 26 27 28 29 30 31 32 33 34 35 36 37 38 39 40



1 2 3 4 5 6 7 8 9 10 11 12 13 14 15 16 17 18 19 20 21 22 23 24 25 26 27 28 29 30 31 32 33 34 35 36 37 38 39 40



1 2 3 4 5 6 7 8 9 10 11 12 13 14 15 16 17 18 19 20 21 22 23 24 25 26 27 28 29 30 31 32 33 34 35 36 37 38 39 40



1 2 3 4 5 6 7 8 9 10 11 12 13 14 15 16 17 18 19 20 21 22 23 24 25 26 27 28 29 30 31 32 33 34 35 36 37 38 39 40



1 2 3 4 5 6 7 8 9 10 11 12 13 14 15 16 17 18 19 20 21 22 23 24 25 26 27 28 29 30 31 32 33 34 35 36 37 38 39 40

LENGTH OVERALL = 43.85 METER
BEAM OVERALL = 9.10 METER

- = BULKHEADS B 15
- = BULKHEADS A 0
- = BULKHEADS A 0

NO	REVISION	DATE	BY
1	Initial Issue	2019.11.25	ENG
2	Design Update	2019.11.25	ENG
3	Design Update	2019.11.25	ENG

STATUS: **FOR APPROVAL**

SHIPBUILDING ENG.	25-11-2019	TRUKLA DUKICH
MECHANICAL ENG.	25-11-2019	TRUKLA DUKICH
INTERIOR DES.	04-11-2019	STEFANIE TRUK

HEESEN

AD-IF NO. 19550 TITLE TECHNICAL GA

DRAWN	CHK	DATE	APP. NO.	DATE	SCALE
TRUKLA DUKICH	TRUKLA DUKICH	2019-11-25	19550-01	2019-11-25	1:100

HEESEN YACHTS LTD. | HEERENVEEN 1 | 3720 XZ HAREN | THE NETHERLANDS