



CHRISTINA O  
— MY —



# ABOUT CHRISTINA O

*More than any other yacht, CHRISTINA O is a symbol of romance, and coming aboard you feel it's magic.*

*The yacht is a stage, and has a history of the most glamorous, and heroic business, political, and entertainment protagonists.*

*Aristotle Onassis understood perfectly what people need to come together, relax and be entertained. You simply need old-world charm.*

We invite you to charter to take advantage of a perfect venue for any gathering of friends and family. You can cruise in absolute comfort and offer your guests an unforgettable experience involving an iconic yacht.

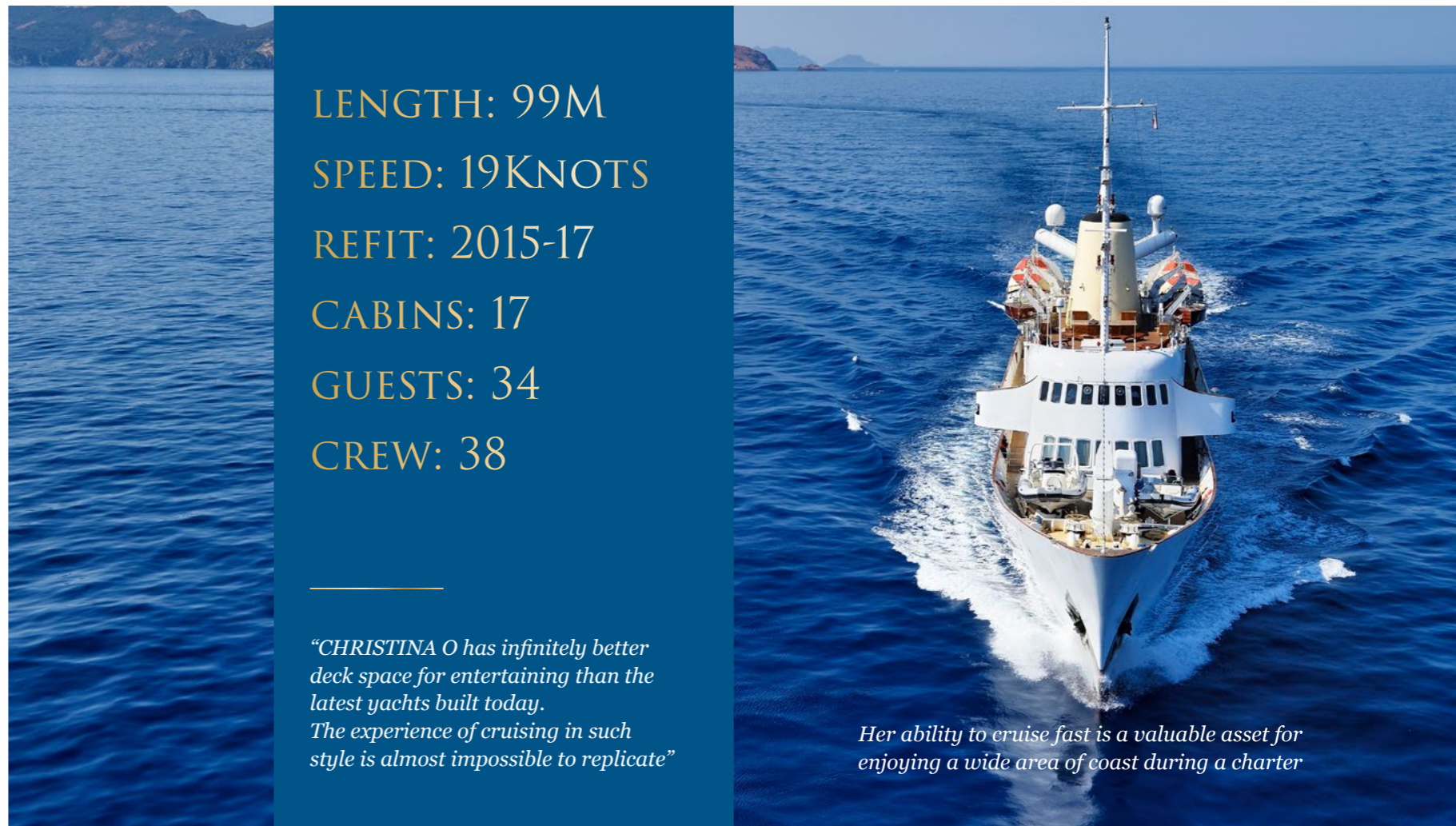
Whether you have experience of large yachts or not, you will appreciate the unique atmosphere and romantic power of this historic vessel. Onassis knew that modern yachts lack class in comparison.

LENGTH: 99M  
SPEED: 19KNOTS  
REFIT: 2015-17  
CABINS: 17  
GUESTS: 34  
CREW: 38

---

*“CHRISTINA O has infinitely better deck space for entertaining than the latest yachts built today. The experience of cruising in such style is almost impossible to replicate”*

*Her ability to cruise fast is a valuable asset for enjoying a wide area of coast during a charter*



# EXTERIOR



*Graceful and impressive  
with style, flair and panache*



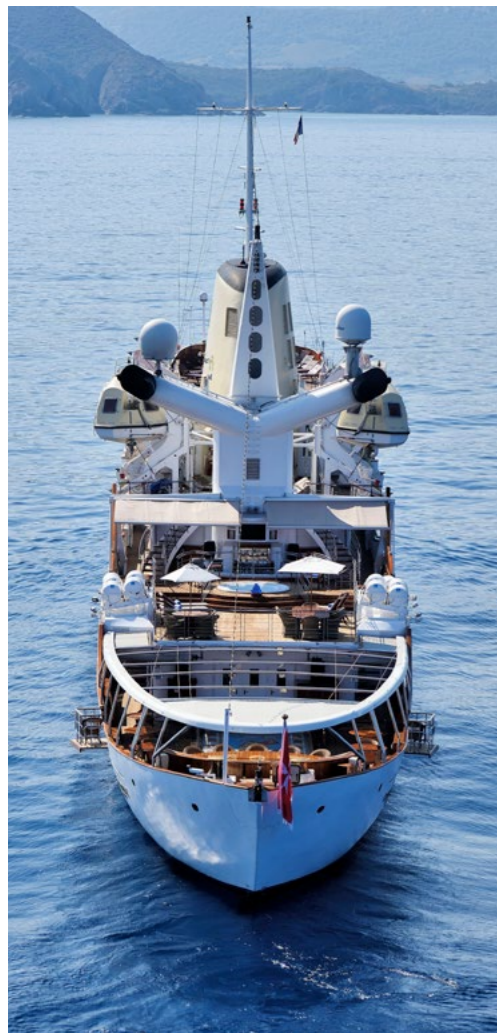
# Aft Deck

*The aft deck table seats 16 people. It is a beautiful varnished table with intricate marquetry inlays designed by Melinda Patten depicting the tales of Ulysses. The mosaic dancefloor lowers to form the swimming pool. It is a popular area for breakfasts and BBQ set-ups.*





*The original showpiece pool design, with a mosaic base that can be raised & lowered*



# Jacuzzi Deck

*There are spaces for large groups as well as cosy relaxing and dining.*

*The split-level Jacuzzi Deck overlooks the Aft Deck pool at one end, and a few steps down next to the Jacuzzi you arrive at the bar (pictured below right).*





# Hacker Craft

## The legend of CHRISTINA O

*Two beautifully restored  
Hacker Craft will transport  
guests between the yacht  
and shore in ultimate style.*



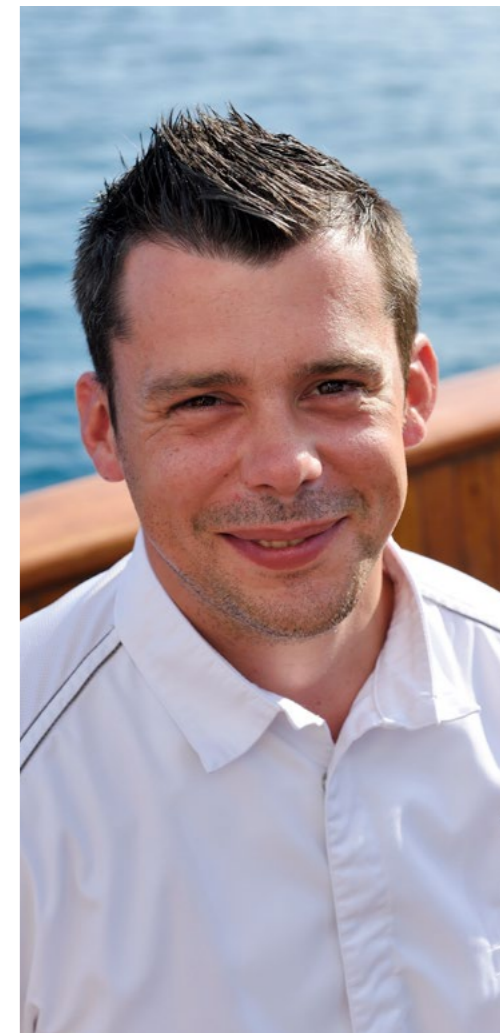


## Crew

*The crew are the most important part of any yacht. Charter guests and brokers have given high praise for this crew.*

The team of Chefs are one of the greatest assets of CHRISTINA O.

The Head Chef is French, and the Pastry Chef is Argentinian, and together with the team of Sous-Chefs they can produce cuisine of impeccable standard. Ask for more details. They can cater for large numbers as well as offer extraordinary a la carte menus.





# INTERIOR

*The Callas lounge is a room for entertaining amongst an amazing collection of memorabilia*



# Lapis Lounge

*Named after the Lapis Lazuli fireplace. Lapis is one of the most sought after stones in use since history began, and reading about it you find it said that it is "stimulating one's desire for knowledge and understanding... it is excellent for enhancing memory"*

The electric piano in the Lapis Lounge can play itself with moving keys, as well as being a perfectly tuned musical instrument.

The books are rare and interesting.





## Ari's Bar

*Ari's Bar is probably the most famous part of CHRISTINA O. The bar itself is made from the wood of an ancient Spanish Galleon; and the world map is an original Philips map.*

*There is a photo of John Wayne in the bar, and another of Elizabeth Taylor & Richard Burton.*

The bar has been the venue for some historic meetings, including the first meeting between Sir Winston Churchill and John F Kennedy.

The adjoining Lapis Lounge is the entry point to the interior of the yacht from the aft deck.





# Maria Callas

*The story of Maria Callas is an important part of music history, and people say “For modern sopranos, there is B.C. and A.C. – Before Callas and After Callas.”*

*Guests can get a unique insight into the life of this great artist, with a unique collection of letters and memorabilia.*

The library is an extension of the Callas Lounge, and is a great place for coffee or drinks.

The original Steinway grand piano in the Callas Lounge is available to use.





# The legend

*The Maria Callas Lounge celebrates the lives and achievements of several of the protagonists of the yacht's early story.*

The entire collection of Callas recordings is available in a special presentation box offered by EMI.

Visible at the entrance to the Callas Lounge are the original wedding rings from her first marriage; and a solid silver Tiffany dish presented to her by JFK.





# Dining Room

42 PEOPLE

28 MAIN TABLE SEATS

14 ADDITIONAL SEATS

Another Steinway piano is adjacent to the dining table.

An impressive original portrait of Sir Winston Churchill hangs next to the door that connects the dining room with Ari's Bar.





*Master Suite "The Onassis Suite"*



# Onassis Suite

BEDROOM

SITTING ROOM

BATHROOM

There is a Sienna Marble fireplace, with an original Renoir painting hanging above it.

The suite has excellent views and is positioned amidships for stability and quiet comfort.







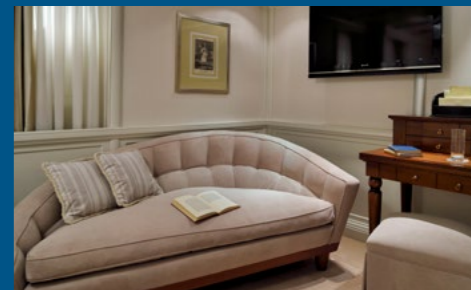
# Guest cabins

*There are 16 guest cabins in addition to the Onassis Suite.*

*All of the guest cabins except two can be either double or twin. The bathrooms are the same in all cabins, with the exception of the much larger Onassis Suite.*

Although the yacht has a total of 17 cabins, and is advertised for up to 34 guests, if there were a baby or young children sharing in their parents cabin, the yacht conforms to the classification for up to 36 guests.

Ample hanging space in the walk in closets.  
The cabins are all named after Greek islands.





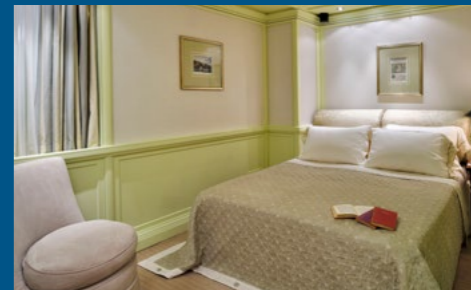
# Comfort

*The bathrooms and cosmetic products supplied are of the highest quality.*

*Beautiful linens and day covers are used, and an evening turndown service is provided by the attentive crew.*

*Air conditioning is centrally controlled.*

WiFi is available throughout the yacht.  
Lower deck cabin portholes must be closed (covered) when the yacht is cruising, due to regulations. They can be opened again when the yacht is static.





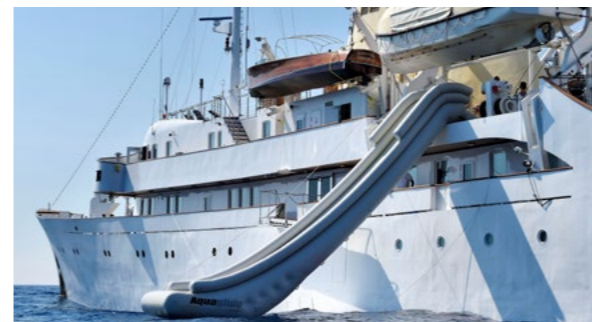
# Spa & beauty

MASSAGE  
FITNESS  
ESTHETIC

There are two full time spa treatment therapists on board the yacht as part of the crew, and they are fully available to offer massage throughout the day, with no extra charge.

The menu of spa treatments is available. Please ask for it.





# Tenders & Toys

*The yacht is extremely well equipped with tenders and toys. The Flyboard is a great new addition, and there are three waverunners and two RIBs for watersports, in addition to the two Hacker Craft tenders.*

Fun is part of the daily routine on board CHRISTINA O.

Access to the sea comes in many forms, depending on your thirst for speed and adrenaline; a workout; or to explore.

The crew can deploy the AquaGlide inflatable slide, and also inflate the OBRIEN ringo and the banana to tow behind one of the two Zodiac RIBs.

There are two SeaDoo Spark waverunners (jetskis), and a 120hp SeaDoo GTI, as well as classics like kayaks and paddleboards.

A new boarding platform was added in 2018, to facilitate stepping to and from the tenders, and for swimming.



*Magnificent timeless lines*



No modern yacht can match the experience of cruising on board CHRISTINA O. Ask your broker who has been on board for their opinion.





*Contact your preferred Broker  
Check the availability and rate*