



HANA

FOR CHARTER



HANA

State-of-the-Art

Hana offers state-of-the-art design and is in excellent condition after an exterior and interior refresh and refurbishment work completed in 2024. This CRN-built motor yacht is a fantastic example of the shipyard's innovative style and features naval architecture from the shipyard and Zuccon International who worked together on this spectacular yacht.





INTERIOR LIVING

Light & Contemporary

The original Claude Missir interior, recently redesigned by Laura Pomponni is contemporary and inviting with gentle lighting throughout to accentuate Hana's already generous volume and size. A standout feature of the décor is the touch of colour and vibrant designs. Geometric patterns and vivid tones guide you between the main and bridge deck. The two saloons are comfortable and relaxing with formal dining for ten on the main deck.





HANA MAIN SALOON



HANA DINING



HANA MAIN DECK



HANA BRIDGE SALOON



HANA BRIDGE SALOON

ACCOMMODATION

Colorful & Spacious

Hana comfortably accommodates ten guests across five cabins. The full-beam master suite is positioned on the main deck and boasts a private terrace with balcony windows and an adjoining study office. On the lower deck, there are three spacious doubles, and a twin cabin with an additional Pullman bed if needed, all with en suite shower rooms.





HANA MASTER CABIN



HANA MASTER CABIN



HANA VIP CABIN



HANA MASTER CABIN



HANA MASTER CABIN



HANA MASTER EN SUITE BATHROOM



HANA DOUBLE CABIN



HANA DOUBLE BATHROOM



HANA DOUBLE CABIN



HANA DOUBLE CABIN



HANA DOUBLE CABIN



HANA DOUBLE CABIN



HANA DOUBLE CABIN



HANA TWIN CABIN



HANA TWIN BATHROOM



HANA TWIN CABIN

EXTERIOR LIVING

Relaxing & Adventure

Up top, the vast sundeck stretches over 50% of her length and provides plenty of choice for lounging and relaxing. Here, guests can enjoy the Jacuzzi, sunpads, and a wet bar. All furnitures on this deck are modular, making Hana the perfect venue for parties and events. On the bridge deck aft, there is an al fresco dining option in a large circular table that can comfortably seat up to eight to ten guests. Hana also features a beach club at sea level, with a well-equipped gym with direct access to the swim platform via large sliding doors.





HANA MAIN DECK



HANA MAIN DECK



HANA MAIN DECK



HANA BRIDGE DECK



HANA BRIDGE DECK



HANA BRIDGE DECK



HANA PORTUGUESE DECK



HANA SUNDECK



HANA SUNDECK



HANA SUNDECK



HANA SUNDECK



HANA SUNDECK

TENDERS & TOYS

What's On Board

Tenders:

- 5.4m (18ft) Castoldi tender with 125hp engine, splash guards, bimini top, teak decking, and stereo system
- 3.5m tender with 25hp outboard engine

Toys

- NEW toys being added for the 2024 summer season TBC
- 1300cc Yamaha XP (2023)
- Kawasaki Jetski (stand-up model)
- E-Foil Fliteboard Sport Cruiser
- Seabob F5SR
- Seabob F5S
- 2 x Stand-Up paddle-boards
- Water skis (adult & childrens)
- Kneeboard
- Wakeboard
- Variety of Inflatable and tow-able toys
- Masks and snorkelling equipment





hana



HANA

SPECIFICATION

BUILD

CRN

YEAR

2008 (2024)

LENGTH

42.60m (139' 9")

BEAM

8.70m (28' 7")

DRAFT

2.40m (7' 10")

GUESTS

11

CABINS

5

CREW

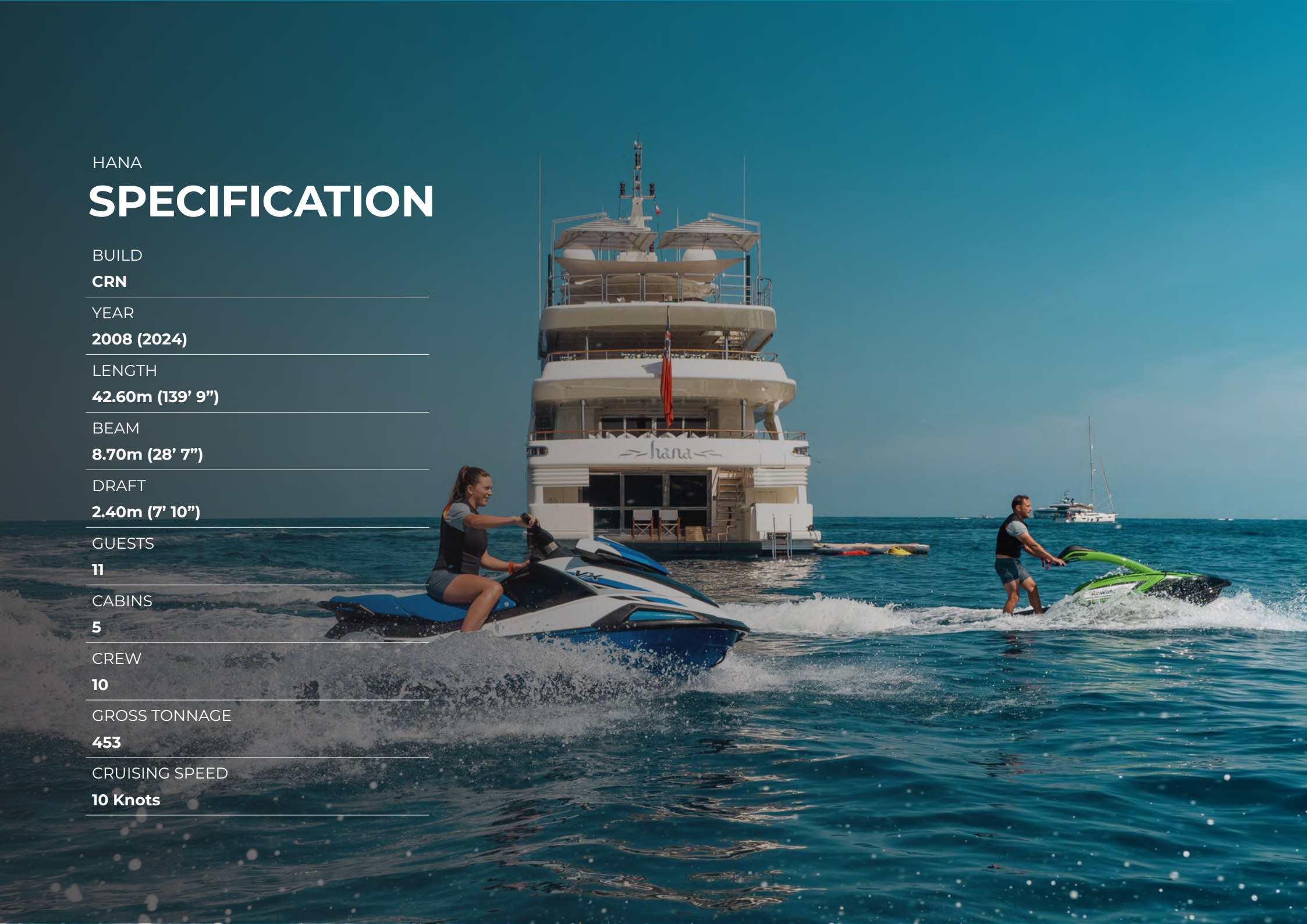
10

GROSS TONNAGE

453

CRUISING SPEED

10 Knots

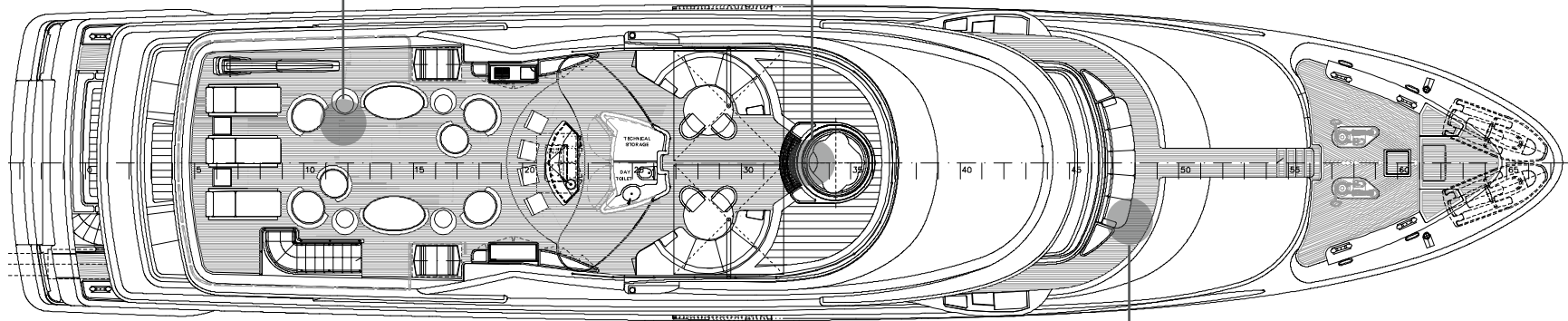
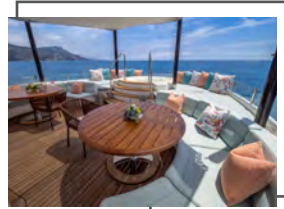


SUNDECK

SITTING & LOUNGING AREA



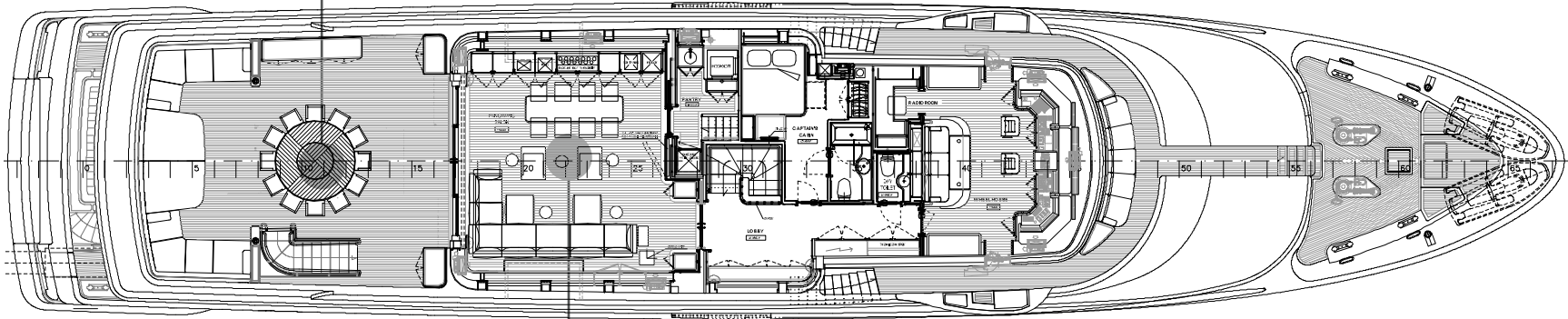
JACUZZI



PORTUGUESE DECK

BRIDGE DECK

SITTING AND DINING AREA



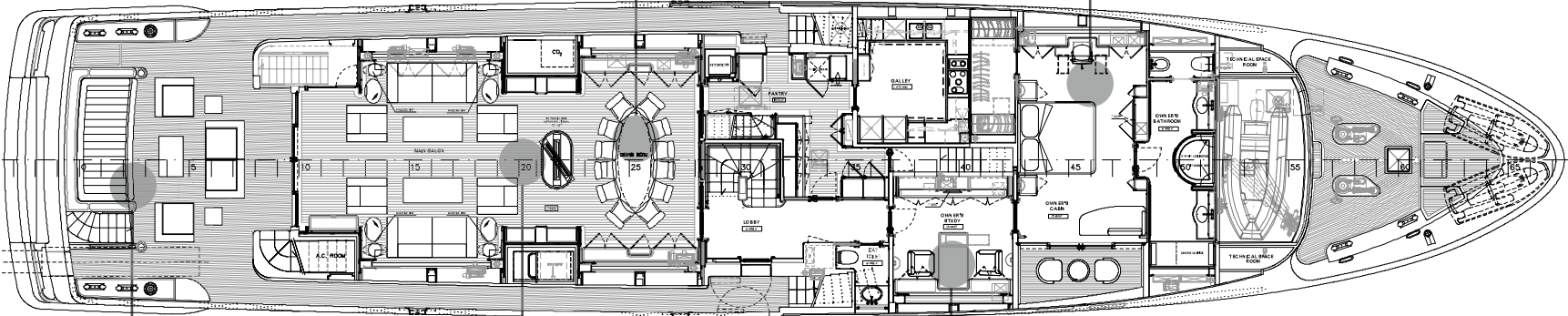
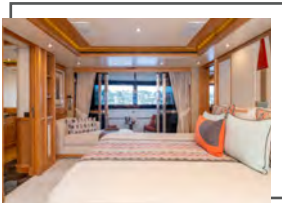
DECK SALOON & AMERICAN BAR

MAIN DECK

MAIN DECK DINING AREA



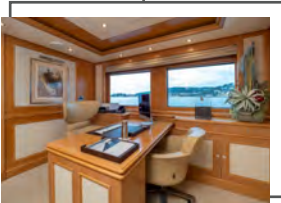
MASTER CABIN



MAIN DECK AFT SITTING AREA



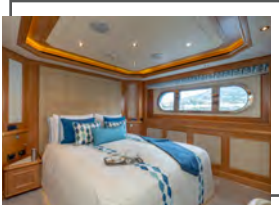
MAIN DECK SALOON



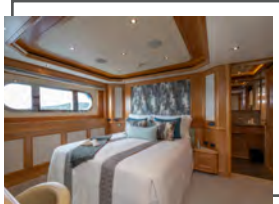
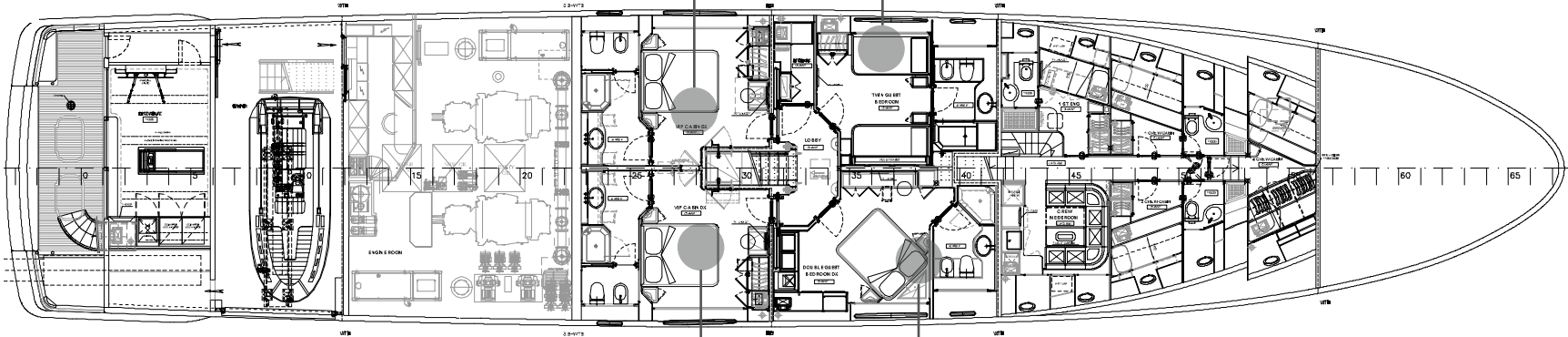
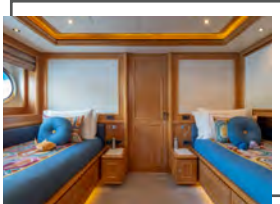
OFFICE

LOWER DECK

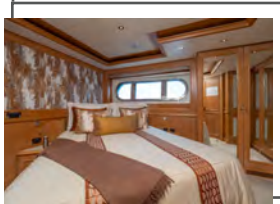
DOUBLE CABIN



TWIN CABIN



DOUBLE CABIN



DOUBLE CABIN







HANA
FOR CHARTER