

# CALYPSO

YOUR ADVENTURE

*In the San Blas Islands*

*Calypso*







The 61.5m (201.9ft) Calypso is the perfect, private platform from which to explore the world.

With a range of over 5500 nautical miles she is a go-anywhere yacht built by Amels to the very highest of standards. The perfect yacht for those with an explorer's spirit and sense of fun, Calypso offers the adventure of a lifetime.

# ARRIVAL



CALYPSO ARRIVING AT ONE OF THE 365 ISLANDS  
IN THE SAN BLAS ARCHIPELAGO



BREAKFAST IS SERVED  
ON THE UPPER DECK





Calypso presents endless opportunities to explore, experience and interact.

Personal itineraries can be created to make sure you get the most out of your charter, whichever corner of the world that may be in.

# EXPLORE





THE INDIGENOUS KUNA INDIANS  
INHABIT ONLY 50 OF THEIR 365 ISLANDS



YOUR ADVENTURE



THE KUNA TRADE COCONUTS,  
BANANAS AND AVOCADOS AS WELL  
AS FISH AND LOBSTER







The sun deck is the perfect chill-out and recharge zone. With Jacuzzi, sunpads and coffee table that can be converted into a dining table, sit back, relax and enjoy uninterrupted views.

# UNWIND



THE SUN DECK CAN BE SHADED WITH  
A FULL AWNING, AS YOU WISH



THE JACUZZI WITH THE SUN AWNING OVER,  
LOOKING THROUGH THE GYM



YOUR ADVENTURE



FAMILY FUN IN THE JACUZZI





THE SUN DECK



INFORMAL DINING ON THE SUN DECK  
WITH PANORAMIC VIEWS



RELAX AND UNWIND IN COMFORT AND SHELTER



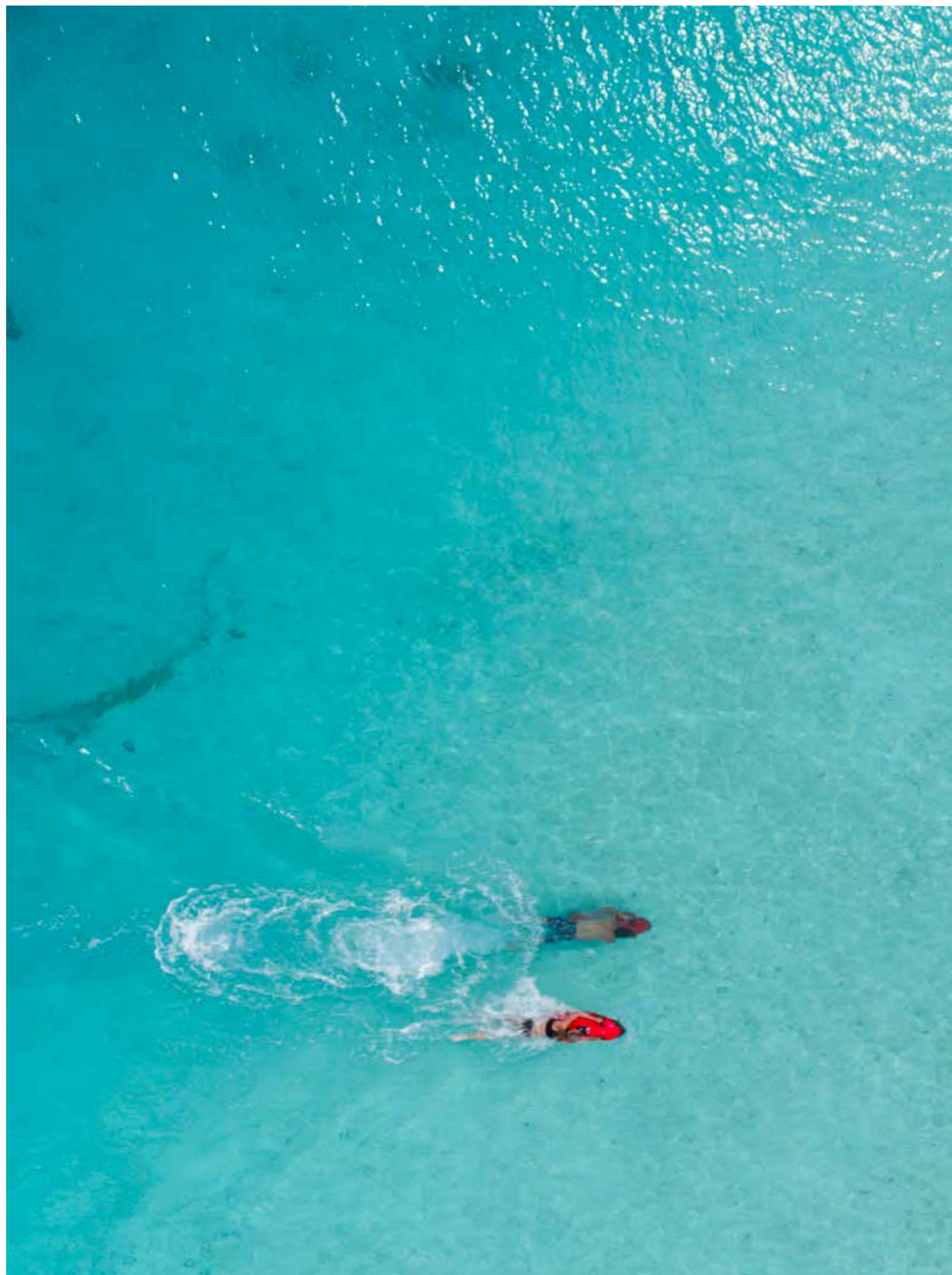
SUN LOUNGERS ON THE SUN DECK. BY NIGHT IT  
CAN TRANSFORM INTO A GREAT PARTY DECK,  
OR A CINEMA UNDER THE STARS

THE FULLY EQUIPPED GYM ON THE SUN DECK



YOGA CLASSES ON THE SUN DECK





The ocean playground offers endless hours of entertainment, especially in far flung destinations with reefs teeming with wildlife and crystalline waters with perfect visibility.

Calypso has her own dive master and watersports instructors who can help you experience a vast array of toys and equipment to suit all ages and energy levels.

PLAY



A SAILING LESSON ON THE PICOS.  
CALYPSO WITH HER WATERSLIDE  
AND TRAMPOLINE DEPLOYED



A TRIP TO THE BEACH  
WITH THE SEABOBS





YOUR ADVENTURE



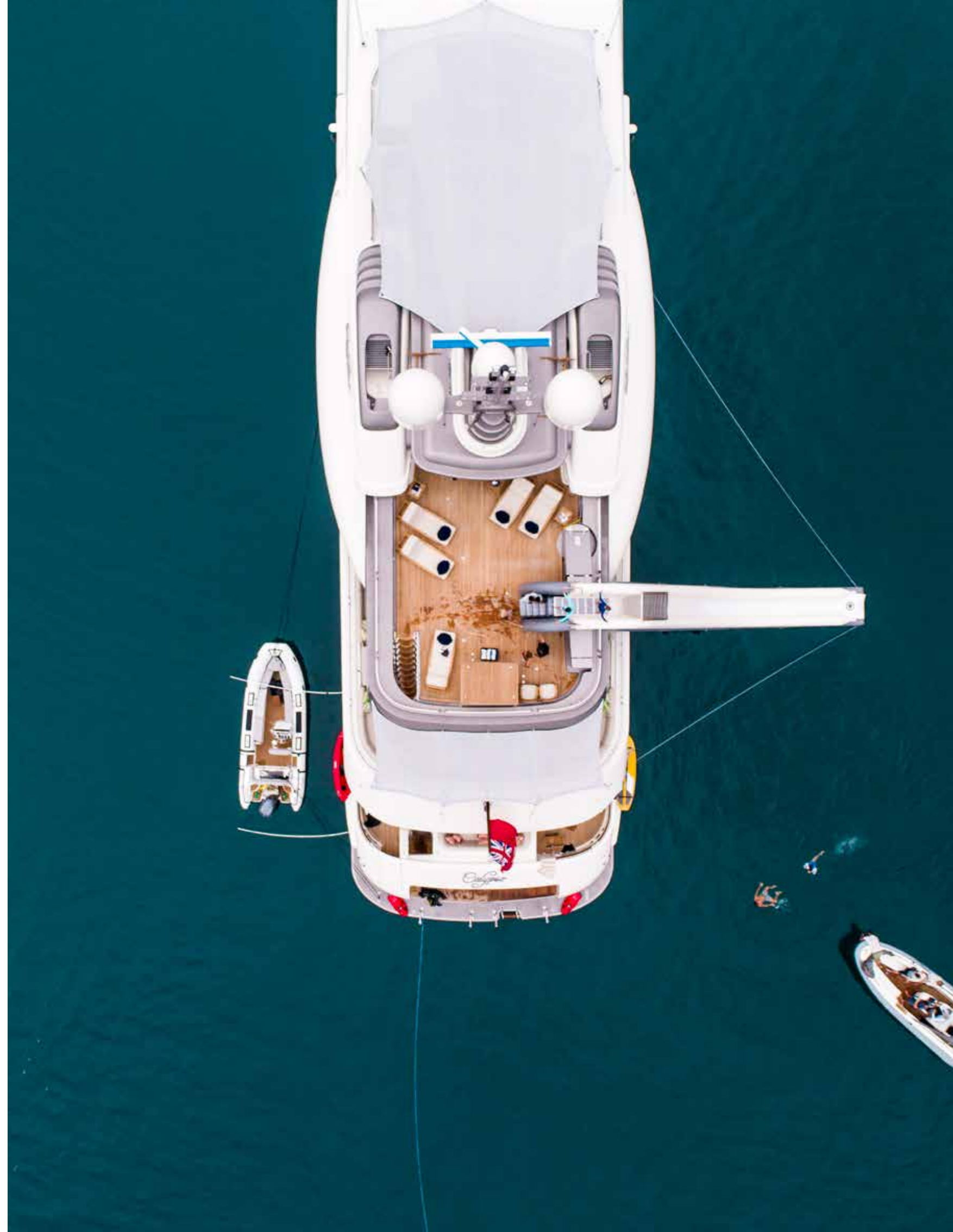




CALYPSO OFFERS DIVING WITH HER OWN  
DIVE MASTER, COMPRESSOR AND EQUIPMENT



CALYPSO IS YOUR OWN FIVE-STAR  
PRIVATE BEACH CLUB





YOUR ADVENTURE







YOUR ADVENTURE



THE LAMPUGA ELECTRIC JET SURF WON'T  
DISTURB THE PEACE AND TRANQUILLITY



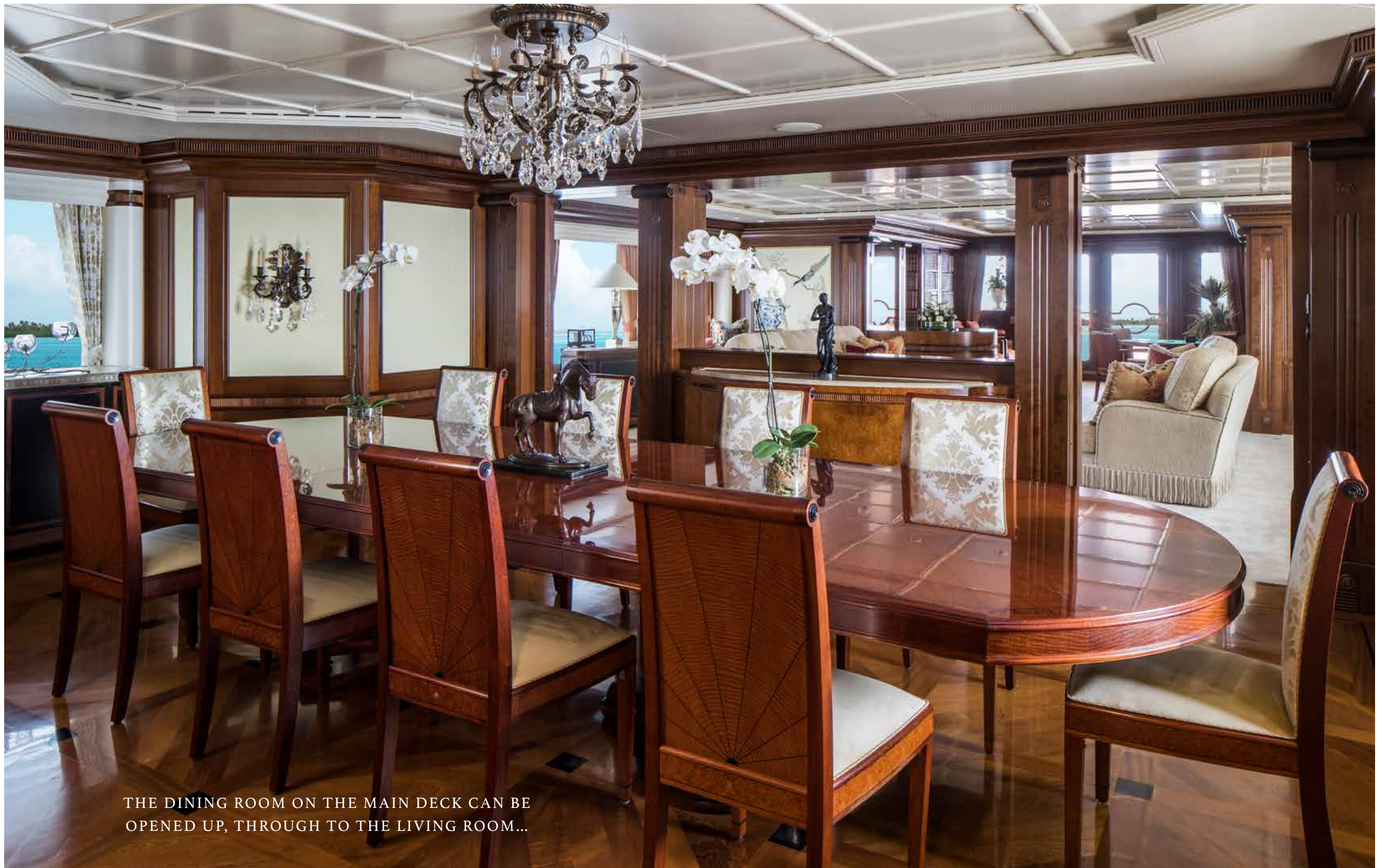
The sumptuous accommodation is relaxed and comfortable, designed with easy indoor/outdoor living in mind.

The flexible living spaces are flooded with natural daylight and the thoughtful interior layout provides sociable seating and quiet corners, furnished with fine fabrics and deep, silk carpets.

# LIVING



AFTERNOON TEA IN THE LIVING ROOM



THE DINING ROOM ON THE MAIN DECK CAN BE  
OPENED UP, THROUGH TO THE LIVING ROOM...





... OR CLOSED OFF FOR FINE DINING



THE SKY LOUNGE ON THE UPPER DECK



COCKTAILS AND CANAPÉS ON THE MAIN DECK





UNDER-THE-STARs  
CINEMA EXPERIENCE  
ON THE SUN DECK





Calypso accommodates 12 guests in sumptuous style. The double height, full beam master stateroom on the owner's deck has a spectacular observatory lounge with study and bar.

There is a VIP suite on the upper deck and four guest suites with pullmans on the lower deck. One of the guest suites to starboard can convert into a large treatment room.

# RETREAT

AN OVAL SKYLIGHT AND TWO LEVELS OF WINDOWS BRING THE OUTSIDE IN. OCCUPYING THE FRONT OF CALYPSO'S MAIN DECK, THE SPECTACULAR MASTER STATEROOM ENJOYS 13 FEET (FOUR METERS) OF HEADROOM





STAIRS LEAD UP TO THE  
OBSERVATORY LOUNGE  
AND STUDY



THE STUDY IN THE MASTER STATEROOM







HIS BATHROOM



HER BATHROOM



THE FOYER ON THE MAIN DECK



HALLWAY ON THE LOWER DECK



THE VIP SUITE ON THE UPPER DECK



YOUR ADVENTURE



PERSEPHONE GUEST SUITE ON THE LOWER DECK



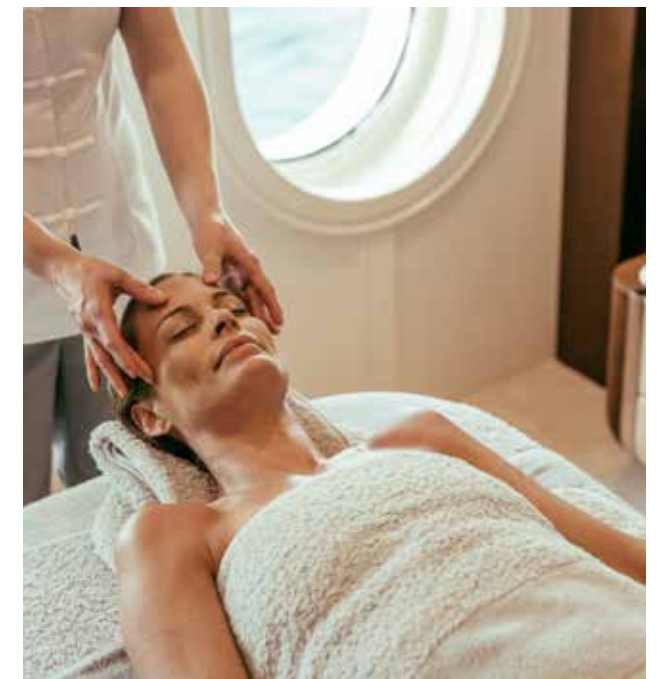
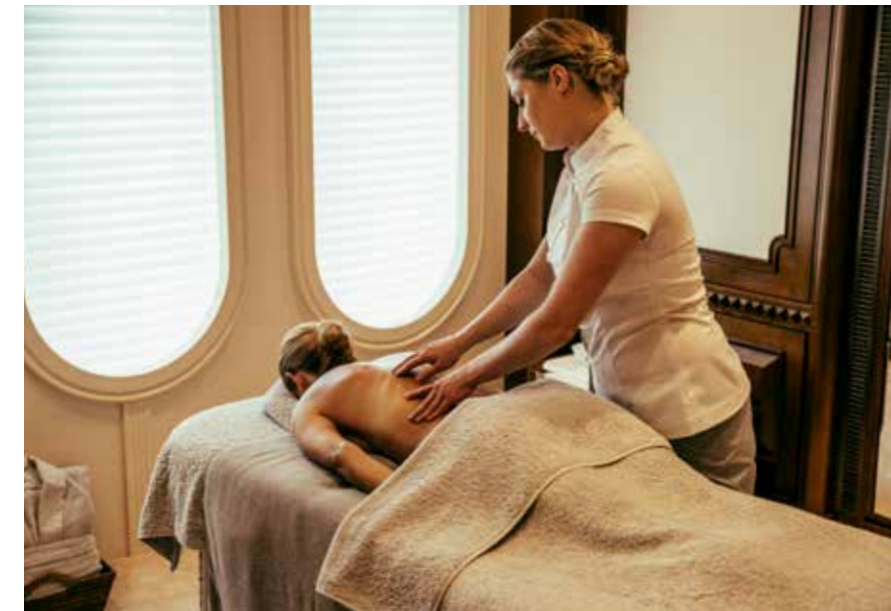
TRITON GUEST SUITE ON THE LOWER DECK



HELIOS GUEST SUITE CAN BE TRANSFORMED INTO A TREATMENT ROOM



YOUR ADVENTURE





EOS GUEST SUITE WITH PULLMAN



EOS GUEST SUITE DETAILS



Calypso's first rate crew are experienced at getting the party started. However you choose to celebrate life they will apply their creativity, attention to detail and outstanding service to make sure you have a truly memorable experience with your family and friends.

From beach barbecues and treasure hunts on deserted islands to fashionable cocktail parties in busy ports, they know what it takes to make your guests feel extra special.

# PARTY



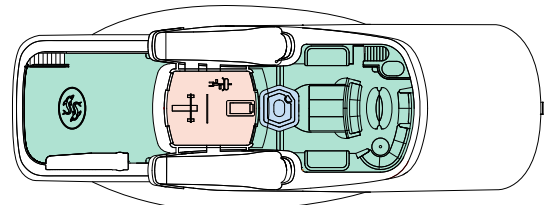




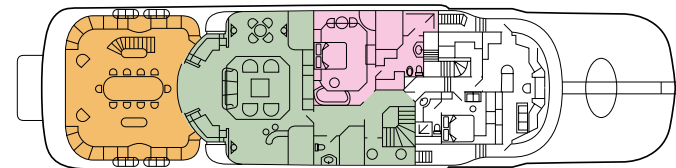


## DECK PLANS

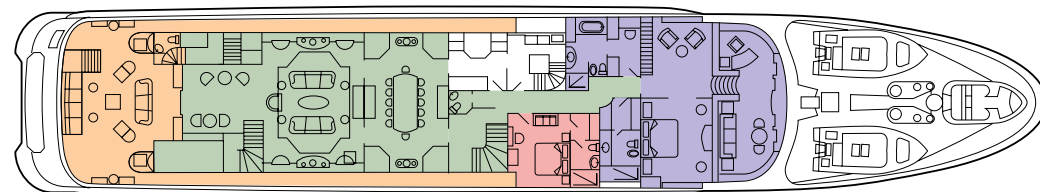
### SUN DECK



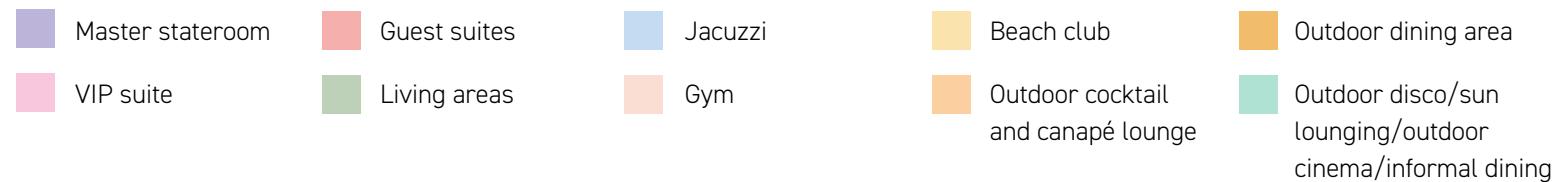
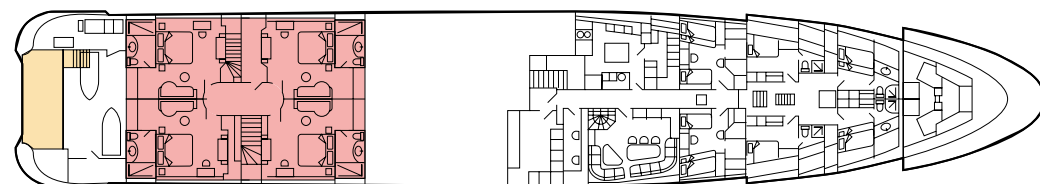
### UPPER DECK



### MAIN DECK



### LOWER DECK



## SPECIFICATIONS

### ACCOMMODATION

Calypso has a total of seven guest cabins. Please note that in accordance with MCA regulations, a maximum of 12 guests can sleep on this yacht.

#### Upper deck:

VIP suite with extra large king bed.

#### Main deck:

Master stateroom with king bed:

This is one of the largest master suites on any 60-70 meter yacht. The bedroom area benefits from 13 feet (four meters) headroom and a skylight. The front of the master stateroom features a raised observation lounge and study with coffee station and bar area, enjoying panoramic views. There are also 'his and hers' bathrooms.

Guest stateroom with queen bed:

This room has two doors and can be attached to—or separated from—the master stateroom. It can also be transformed into a massage room.

#### Lower deck:

Four guest suites, each with queen bed and single fold-down adult pullman bed.

### CREW

+/- 16 including Captain

### DIMENSIONS

Length overall: 61.5m (201.7ft)

Beam: 10.6m (34.8ft)

Maximum draft: 3.5m (11.5ft)

### BUILDER

Amels, Netherlands

### DESIGNERS

Naval architect: Robin Van Son

Interior designer: Aileen Rodriguez, Amels

### BUILD

Launched: 2003

Refit: 2016 / 2017

### GENERAL

Fully Load Displacement: 1,027.98 MT

Gross Tonnage: 1,149

Net Tonnage: 344

Flag: Cayman

Port of Registry: Bloody Bay, Cayman Islands

Classifications: Lloyd's

Hull: Steel

Superstructure: Aluminum

### ENGINE

Cruising speed: 13 knots at 1,400 RPM

Range: 5,000 nm at 12.5 knots

Main engine: 2 x 2,600 hp Caterpillar Diesel

### COMMUNICATIONS

Satellite broadband

Four satellite voice lines

WiFi throughout the yacht

Iridium Satcom

Internal telephone system

### AUDIO VISUAL

Satellite TV

Kaleidescape video and music storage system

PS3, Xbox & Wii

Apple TV & HD TV's in guest cabins

Apple TV in all guest's areas

HD cinema projector and 3 x 2m (9.8 x 6.6ft) screen plus xl Blu-ray player

Disco equipment

### TENDERS & TOYS

7.5m (24.6ft) custom-built Dariel sports tender

7.5m (24.6ft) custom-built Dariel Limo tender

3.9m (12.8ft) rescue tender

Various double and slalom water-skis

Various wakeboards

x4 Montague mountain bikes

x3 Windsurfers

x2 Pico laser sports

x2 Solid stand up paddle boards

x4 Inflatable stand up paddle boards

x1 Float trampoline

x1 Slide from sun deck with launch pad

x1 Four person inflatable towable

x2 Two person inflatable towable

x2 Seabobs

x1 Lampuga electric jet surf

x2 One person kayaks

x2 Two person inflatable kayaks

Assorted snorkelling gear

x6 Floating noodles

Assorted fishing equipment

x1 Gas BBQ

x2 Full sets of kite surfing harness and assorted kites

Beach tables, chairs & awnings, various beach toys and games for adults and children

All particulars are believed to be correct at the time of going to print but cannot be guaranteed.

Brochure design, photography and production: Wilkins & Rock UK.

*Calypso*