



# BLACK LION

100' 7" (30.65m) | Perini Navi | 2012



# BLACK LION

## BASIC SPECIFICATIONS

---

### BUILDER

Perini Navi

### BEAM (ft/m)

23' 8" (7.2m)

### CRUISING/MAX SPEED

10 / 13 Knots

### CREW

4

### RANGE

### LENGTH (ft/m)

100' 7" (30.65m)

### DRAFT (ft/m)

13' 2" (4m)

### FUEL CONSUMPTION

20 L /H at 1800 rpm , 23 L/H at 2000 rpm

### ACCOMMODATION

10 guests in 4 cabins

### INTERIOR DESIGNER

Nauta

### BUILT/REFIT

2012 / 2016

### GROSS TONNAGE

83 GT

### ENGINES

1 x 305hp Cummins QSB 5.9

### ARRANGEMENTS

1 Double, 3 Twin

# BLACK LION

## KEY FEATURES

---

- › HIGH-PERFORMANCE YACHT OFFERING COMFORTABLE AND FAST SAILING
- › DOUBLE LEVEL SALON THAT COMFORTABLY ACCOMMODATES 10 GUESTS
- › FOLDABLE TRANSOM THAT OPENS INTO A BEACH CLUB WITH A SWIM LADDER
- › HIGH-QUALITY MAINTENANCE INSIDE & OUT

# BLACK LION

## WATER TOYS

---

- › BSC 430, YAMAHA 40 HP FOUR STROKE
- › KNEEBOARD
- › SNORKELLING GEAR
- › 2 WATER SKIS (1 SET FOR ADULTS & 1 FOR KIDS)
- › 2-SEATER INFLATABLE KAYAK
- › WAKEBOARD
- › INFLATABLES















BLACK LION









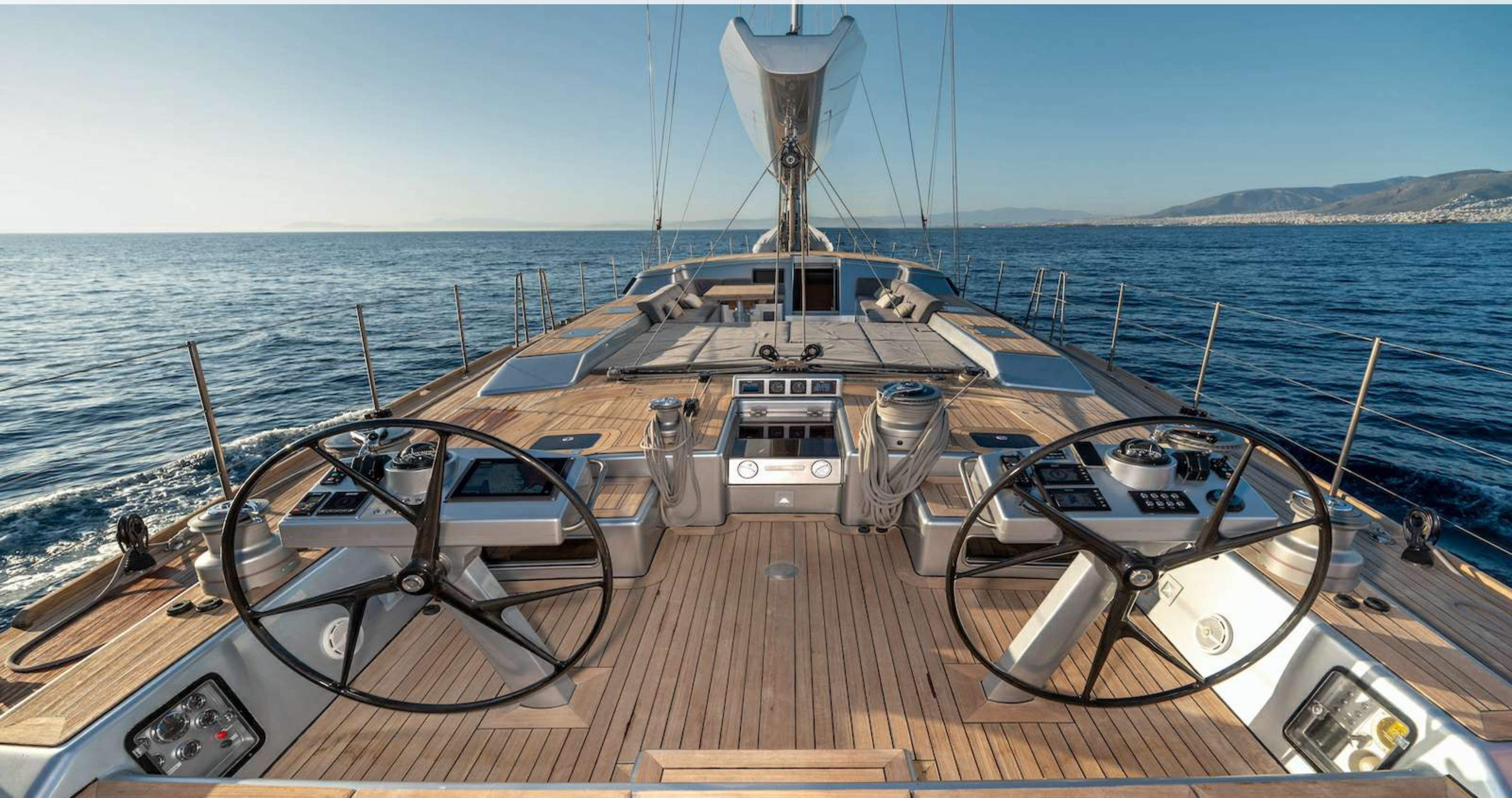




BLACK LION







































































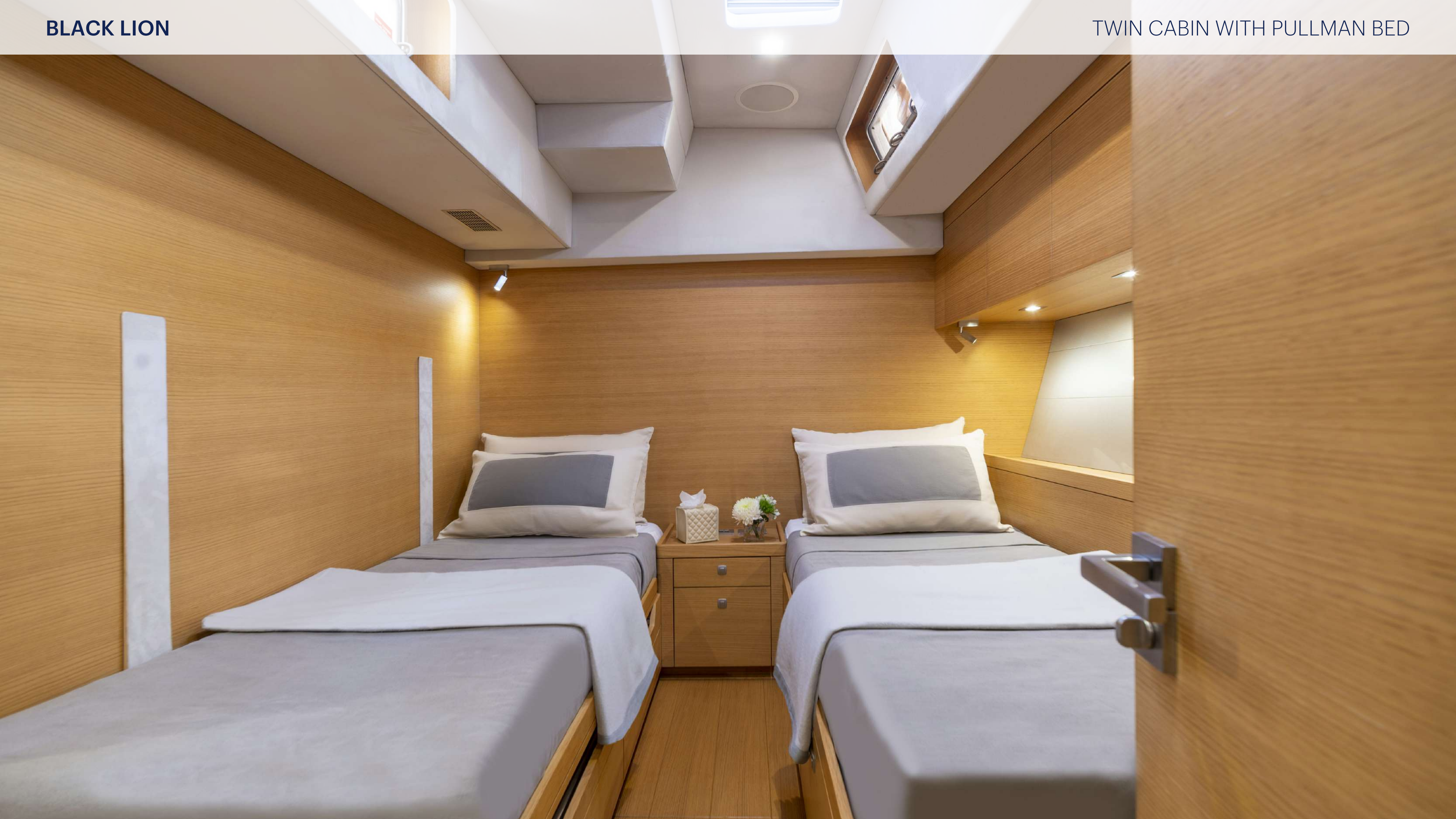




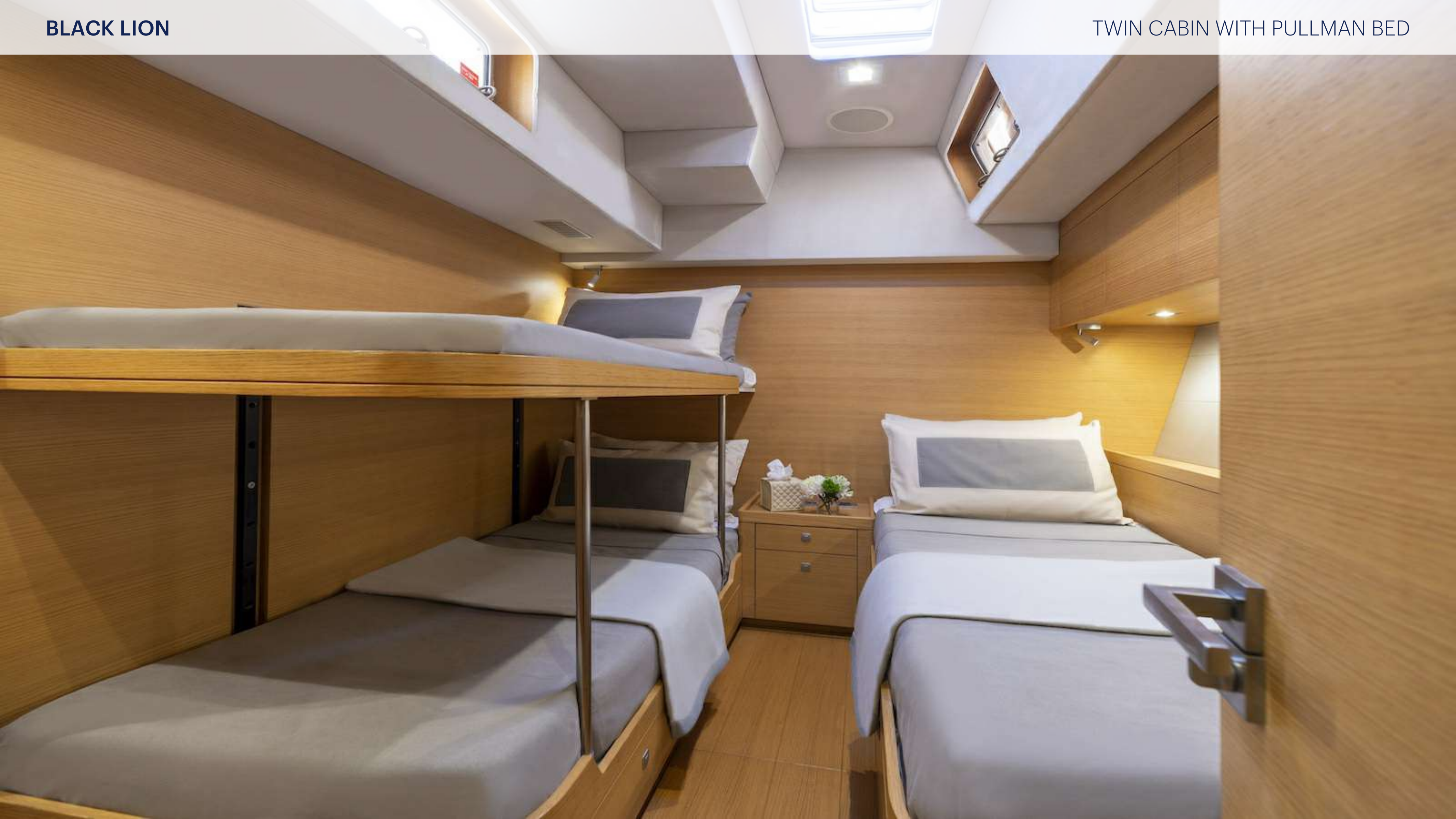






























BLACK LION

STERN





BLACK LION

AERIAL VIEW









