

B E R C O V O Y A G E R

1



B E R C O V O Y A G E R

F O R C H A R T E R





BERCO VOYAGER

The sought-after Sunseeker's iconic 131 series, BERCO VOYAGER is a luxurious 40.05m motor yacht. Handfinished with extraordinary attention to detail, she was delivered to her owner in 2018.

OVERVIEW

BERCO VOYAGER was hand-finished with extraordinary attention to detail before she was delivered to her owner in 2018. She combines a spacious layout with state-of-the-art amenities, has a top speed of 26 knots and cruises comfortably at 14 knots.

GUEST CAPACITY

With 5 stylish cabins, BERCO VOYAGER can welcome up to 10 guests onboard overnight. She also has accommodation for her 8-person crew who will be on hand to ensure the charter exceeds all your expectations. Located on the main deck, the full-beam master suite is a stunning contemporary space.



SPECIFICATIONS

40.05M | SUNSEEKER | 2018

 LENGTH 40.05m BEAM 8.09m NO. OF GUESTS 10 MAX SPEED 25 kts GUEST CABINS 5 RANGE 1,500nm

INTERIOR

BERCO VOYAGER's vast salon is a magnificent formal lounge and dining area. A comfortable seating area offers an ocean backdrop while the beautifully-decorated dining area can seat up to 10 guests. Her upper deck sky lounge features a lounge area with a wide-screen TV plus a bar for evening cocktails.

EXTERIOR

Built to RINA classification rules, her expansive teak decks offer guests a choice of locations for relaxing outdoors in the sunshine. The main deck lounge and dining area for ten guests is a great spot for a leisurely lunch. A large swim platform offers guests easy access to the water while the bow has oversized sunpads. The ultimate chill-out zone, BERCO VOYAGER's sundeck features an outdoor bar, dining area and Jacuzzi.









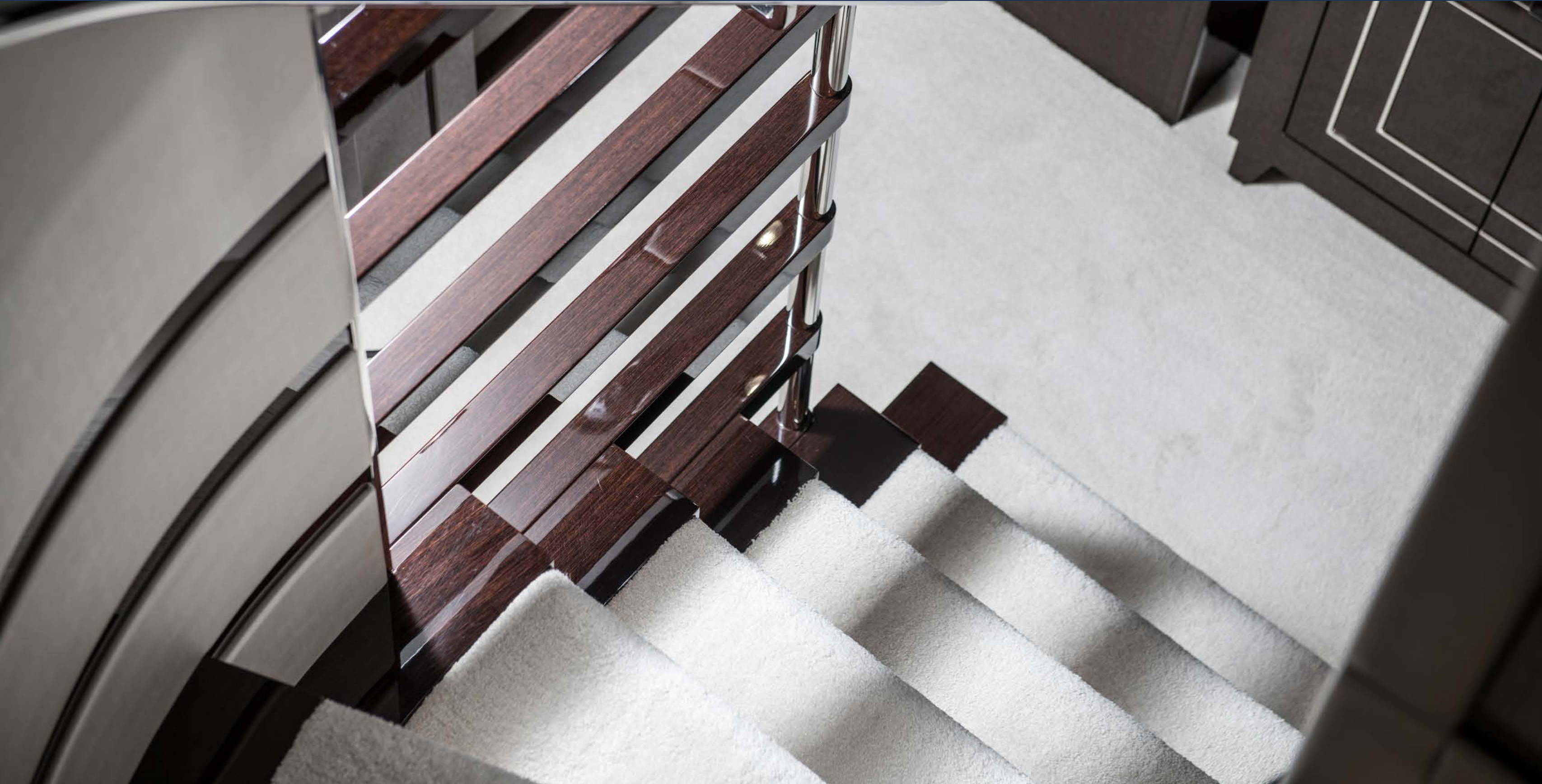


























































TOYS & TENDERS

TOYS, EQUIPMENT & ACCESSORIES

- 1 x 6m 565 Williams diesel jet tender
- 1 x 3.5 metre rib tender
- 2 x Sea-Doo RXP X RS300 (2018 model)
- 4 x F5 S Seabobs
- 2 x Rigid Paddleboards
- 2 x Inflatable Paddleboards
- 1 x Inflatable 2 man Kayak
- 2 x Electrical Go Cycles
- 1 x Wake board
- 1 x Pair Water skis / Mono Ski
- 2 x Inflatable 1 person donut style tow toy
- 1 x Inflatable 2 person tow toy
- 1 x inflatable 3 person tow toy
- 2 x Fishing rods
- Adult and enfant snorkelling masks, fins, swimming goggles
- Adult and enfant buoyancy aids



SPECIFICATIONS

DECK EQUIPMENT

- Sun Deck: Forward deck jacuzzi (sun pads surround the jacuzzi easy access walk around), seated bar, 1 BBQ and individual sun loungers
- Foredeck: Sunpads as well as a comfortable sitting area
- Hydraulic swimming platform that lowers into the water.

COMMUNICATIONS EQUIPMENT

- Yealink phones throughout the interior of the yacht.

AUDIO-VISUAL EQUIPMENT

- Each Guest Cabin: 1 x 40inch Samsung HD LED with Harmon Kardon 580 5.1-3D Blue-ray surround sound B&W speakers and sub-woofer.
- Sonos system integrated throughout the yacht including all decks.
- Apple TV throughout the yacht

AUDIO-VISUAL EQUIPMENT (CTD.)

- Sky lounge with bar and large TV 75inch Samsung HD LED with Harmon Kardon 580 5.1-3D Blue Ray surround B&W speakers and sub-woofers.
- Sky lounge deck: Large round dining table for ten guests, a retractable awning and additional relaxed sitting area.
- 1x 8ft retractable Projector screen
- 1x Sony 4k throw projector VPL vz1000ES model
- 1x 4k Blue-ray DVD player
- 1x Arcam processor
- Main Saloon: 1x 55inch Samsung HD LED with Harmon Kardon 580 5.1-3D Blue-ray surround sound system.B&W speakers and sub-woofer.
- Master Cabin: 1x 55inch Samsung HD LED with Harmon Kardon 580 5.1-3D Blue-ray surround sound

GYM EQUIPMENT

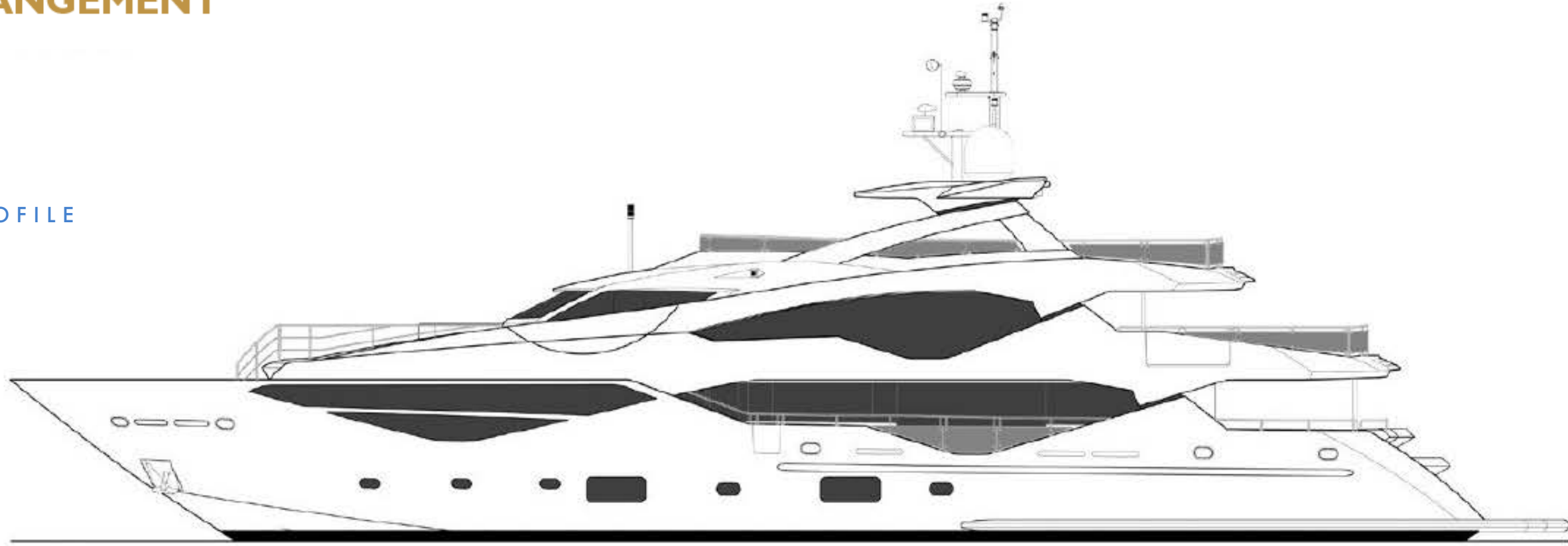
- 4 x Yoga mats
- 1 Yoga ball
- 1 x Gym bench and light weights

MAIN MACHINERY

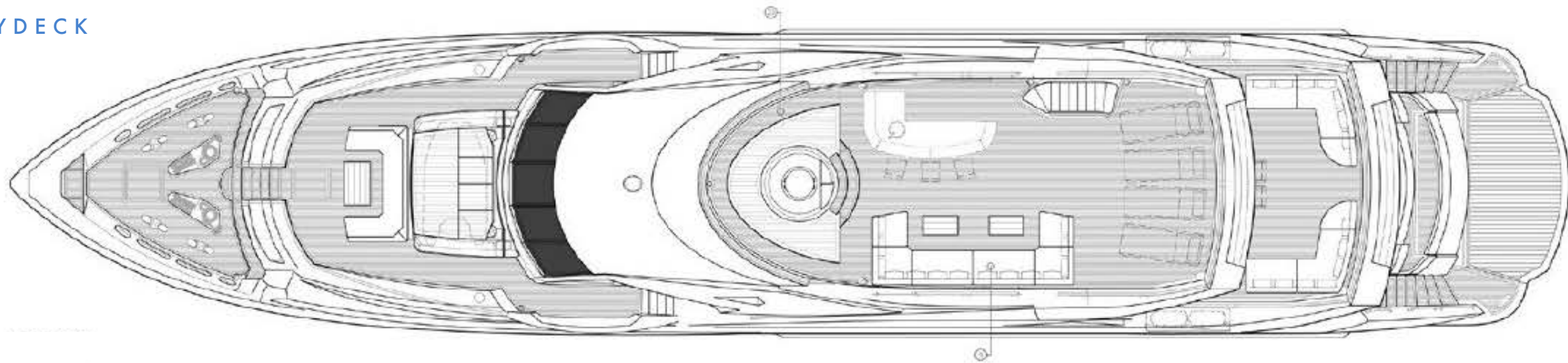
- A maximum range of 1,500 nautical miles
- 25 knots = 1200 l/p/hr
- 16 knots = 650 l/p/hr
- 10 knots = 140 l/p/hr
- Fuel consumption: 14 knots @ 400 l/p/hr Litres/Hr
- Gross Tons: 341
- Cruising speed: 14 knots

**BERCO VOYAGER
GENERAL ARRANGEMENT**

PROFILE



SKYDECK

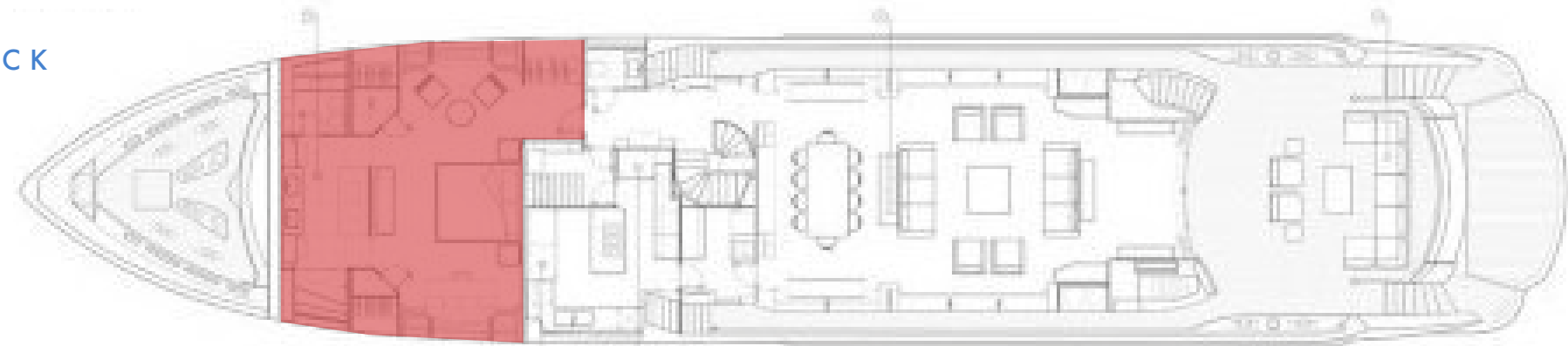


UPPER DECK



MAIN DECK

- Guest Cabins
- Master Cabin



LOWER DECK



DISCLAIMER

While every effort has been made to ensure that the information contained within this presentation is as up-to-date and accurate as possible at the time of going to press, this cannot be guaranteed. All rights reserved. No part of this publication may be reproduced or used in any form without prior written permission.