

E-BROCHURE

Ahpo







AHPO is a bespoke yacht from Lürssen that comes with every possible amenity for guests looking for a charter like never before.

She can accommodate 16 guests across eight cabins including a jaw-dropping Master duplex en suite with direct access to a vast sky deck gym.







FORNELL

THE IMPASSIBLE
COLLECTION OF
CARS



FORMULA 11







The formal dining table seats up to 22 guests and has fold down balconies on each side. The alfresco table can also convert into two tables for 6 guests, as well as into one big table for up to 22. The board room table can seat up to 14.













The rest of the accommodation includes seven double cabins. Two VIP cabins can be found on the owner's deck, while four double cabins are situated on the main deck and one on the lower deck.





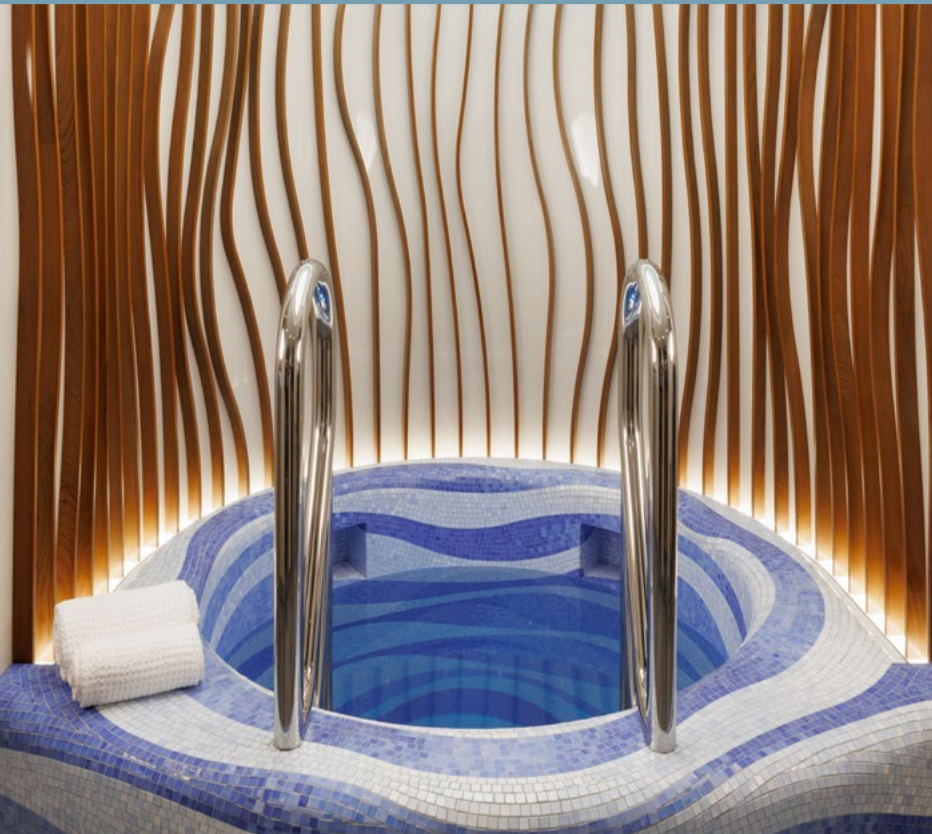








The lower deck spa is a standout feature with a plunge pool, a Himalayan salt sauna, a Hammam and massage room, decorated with beautiful mosaics and ivory onyx, and is a beautiful, blissful setting where guests can let their worries wash away.

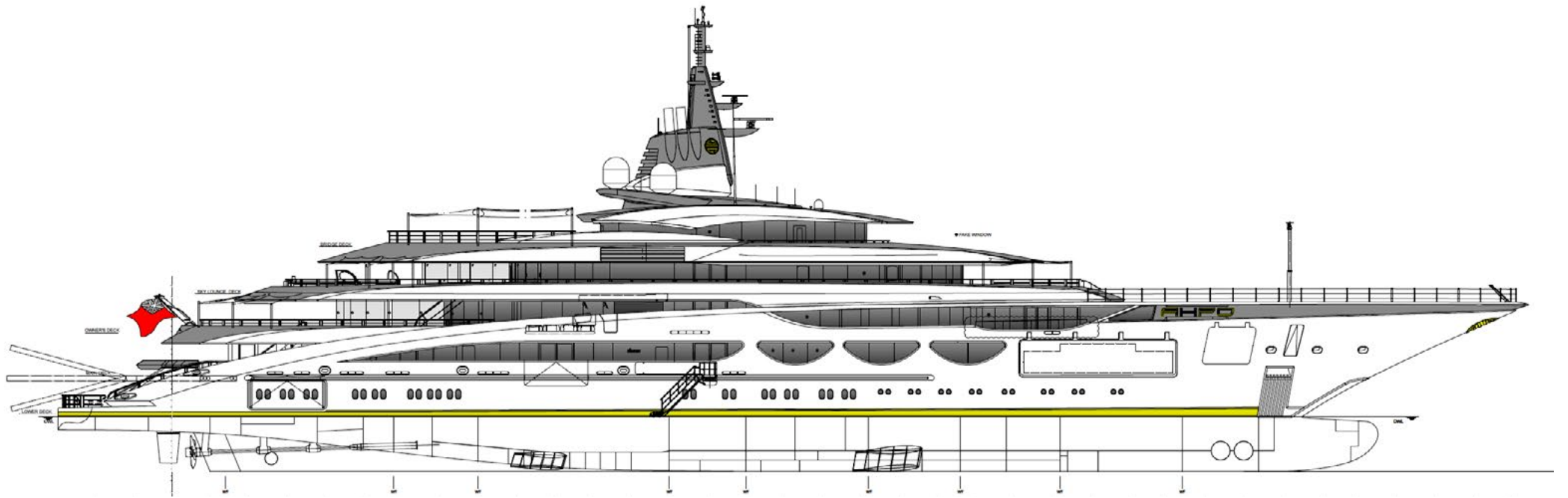


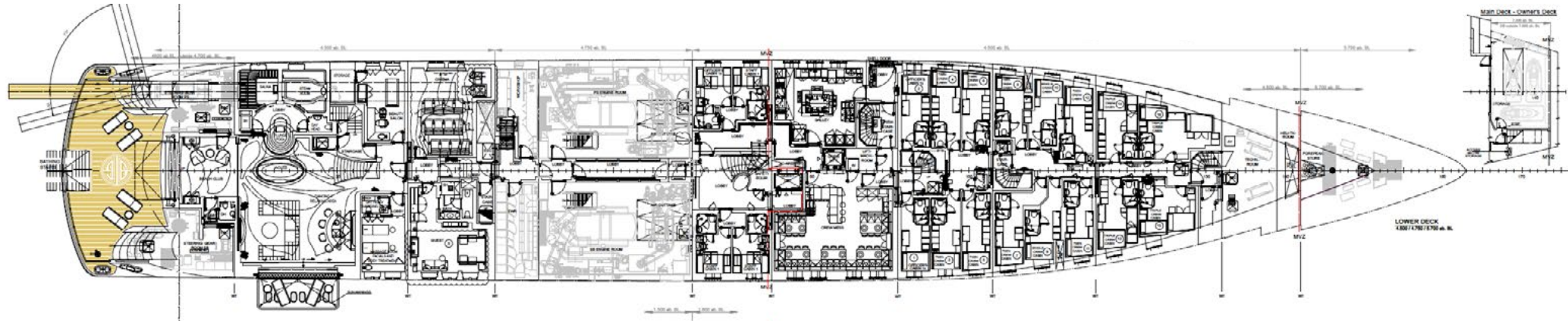
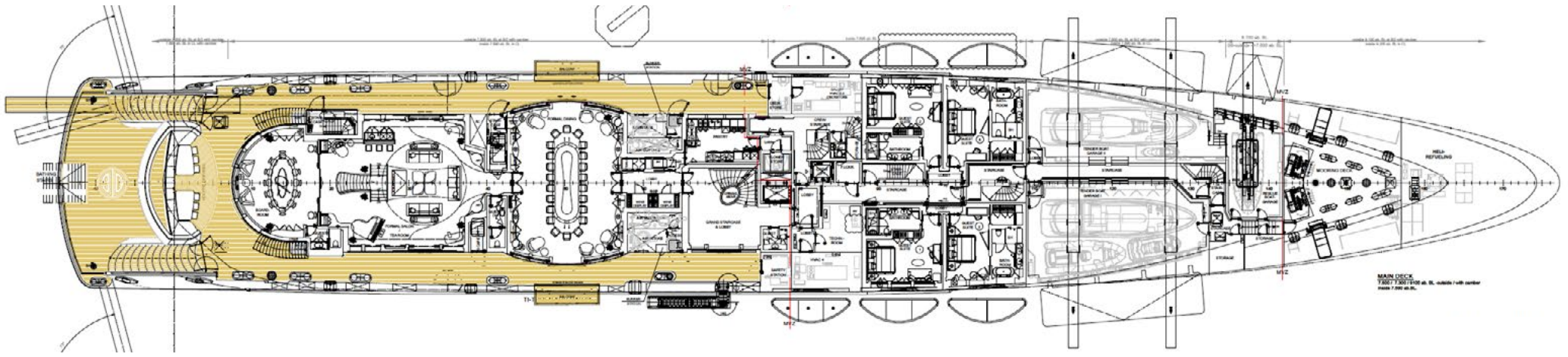
Perfect for family charters or wellness charters, AHPO yacht comes with a wealth of outstanding features, from her infinity pool on the sky deck and oversized beach club to her IMAX cinema.













SPECIFICATIONS

MAIN CHARACTERISTICS

Builder: Lurssen
 Length: 115.10 m (377' 7")
 Beam: 18.21 m (59' 9")
 Draft: 4.30 m (14' 1")
 Crew : 36
 Year built: 2021
 Accommodation : 16 guests
 Cabin configuration: 8 double
 Interior Designer: Nuvolari & Lenard
 Cruising speed : 14 knots
 Stabilizers at anchor
 Stabilizers underway
 Approved RYA centre

TENDERS

1 x 12.00m I.C. Yachts Limousine Tender, 16 passengers
 1 x 12.00m I.C. Yacht Open Sportboat Tender, 16 passengers
 2 x 6.20m Yachtwerft Meyer Rescue Boat, 6 passengers
 1 x 4.11m ICLOYSEA –Custom Carbon Craft-130, 7 passengers

TOYS

4 x Jet Ski - SeeDoo GTX-230
 2 x SEABOB F5 SR
 2 x Electric Surfboard - Awake Board - RÄVIK S
 2 x Electric Foilboard - LIFT eFoil 5.6 cruiser
 2 x RONIX WAKEBOARDS - Boot Boards Size 144 & 138
 1 x JOBE VANITY WAKEBOARD SIZE 131
 2 x Airhead - Combo Water Skis
 1 x O'Brien - Enforcer Kneeboard
 1 x Subwing - White Flame Underwater Towing Wing
 5 x Red Ride Paddle Board - 10'6"
 2 x Advanced Elements Advanced Frame Expedition Elite
 Inflatable Kayak Blue
 2 x Deschutes 130 Inflatable Kayak Orange
 1 x Big Mable Towable
 1 x Great Big Mable Towable
 1 x Airhead - Jumbo Dog Towable
 1 x Demon
 2 Towables

BEACH SET-UP

2 x Custom Carbon Beach Table for up to 6 Guests –Multiplex
 10 x Summit Folding Director's Chair -SD346
 6 x Summit Folding Adjustable Recliner -SD343
 6 x Summit Folding Footrest/Table With Cushion And Tray -SD344
 2 x Beach Parasols -Tuuci Ocean Master M1 Crescent
 4 x Easy Up Platinum 3x3 m Gazebos
 2 x Soundboks Gen.3 Wireless Bluetooth Speakers
 2 x Weber -Summit Kamado E6 Charcoal Grill / BBQ
 Selection of Games & Toys: Beach Volleyball, Cornhole, Cricket, Paddle Tennis, Football, American Football, Disc Golf

GYM EQUIPMENT

2 X Peloton bikes
 Full set of dumbbell weights from 2kgs-24kgs
 Kettlebells 6/8/10/12kg
 Various blocks and straps for yoga

Technogym:

Manual treadmill
 2 x Normal motorized treadmills
 2 x Elliptical machines
 Barbell machine
 2 x Chest press machine
 Shoulder press machine
 Leg extension machine
 Leg press machine
 Leg curl machine

KEY FEATURES

Outstanding spa
 Infinity pool
 Duplex Master suite
 Accommodation for 16
 Full-sized gym
 Two Limo tenders

Advertising of the above vessel in either printed publications on the internet or in any other medium is not permitted without prior permission from the Owner via the Central Agent.

All particulars are given in good faith and are believed to be correct but cannot be guaranteed.