



AGRAM

144' 11" (44.17m) | Heesen | 2008

AGRAM

BASIC SPECIFICATIONS

BUILDER

Heesen

BEAM (ft/m)

29' 7" (9m)

CRUISING/MAX SPEED

14.5 / 24 Knots

CREW

9

RANGE

3200 nm

LENGTH (ft/m)

144' 11" (44.17m)

DRAFT (ft/m)

8' 3" (2.5m)

FUEL CONSUMPTION

550 Litres/Hr

ACCOMMODATION

12 guests in 6 cabins

INTERIOR DESIGNER

Omega Architects & Heesen

BUILT/REFIT

2008 / 2016

GROSS TONNAGE

458 GT

ENGINES

2 x MTU 16V 4000 M90

ARRANGEMENTS

4 Double, 2 Convertible

AGRAM

KEY FEATURES

- › **STYLISH AND MODERN INTERIOR**
- › **AMPLE SPACE FOR SUNBATHING**
- › **EXPERIENCED AND LONG TERM CREW**
- › **UPPER SALON CAN BE CONVERTED AS A VIP STATEROOM**
- › **SUPERSIZE JACUZZI ON SUNDECK**
- › **VERY SPACIOUS SUNDECK**
- › **A WIDE SELECTION OF WATER TOYS**

AGRAM

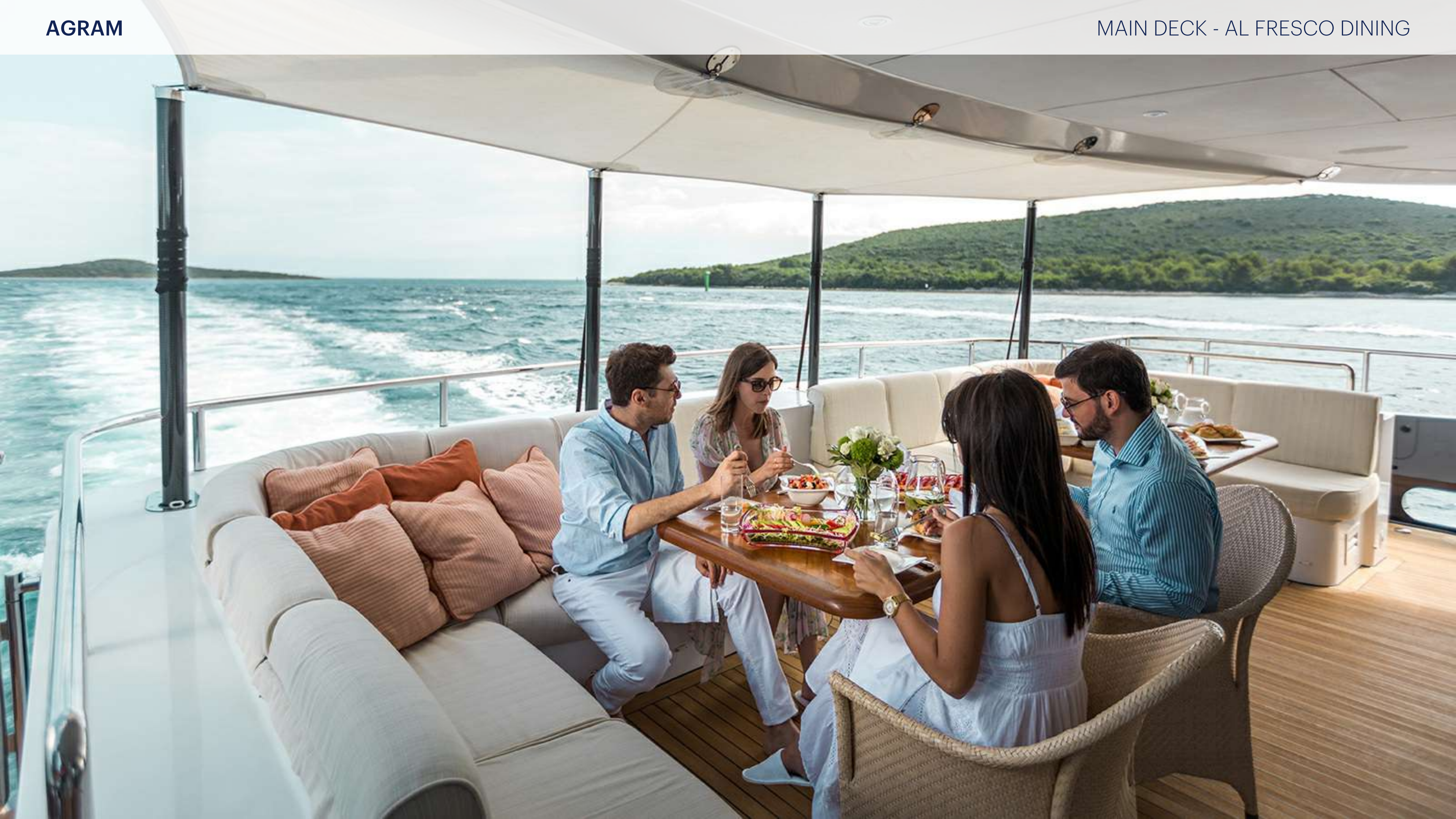
WATER TOYS

- › 1 X JET TENDER CIRUS 6.50M WITH 260 BHP
- › 1 X SEABOB F5S
- › 2 X KAYAK
- › 1 X DOUGHNUT
- › DIVE GEAR (RDV DIVING ONLY)
- › 1 X JET SKI YAMAHA SVHO WITH 260 BHP
- › 1 X STAND UP PADDLE BOARD
- › 1 X WAKEBOARD
- › 2 X WATER SKI
- › 1 X JET SKI YAMAHA FX SHO WITH 160 BHP
- › 1 X SEA DOO RS3 UNDERWATER SCOOTER
- › 1 X BANANA
- › SNORKELING AND FREEDIVING GEAR









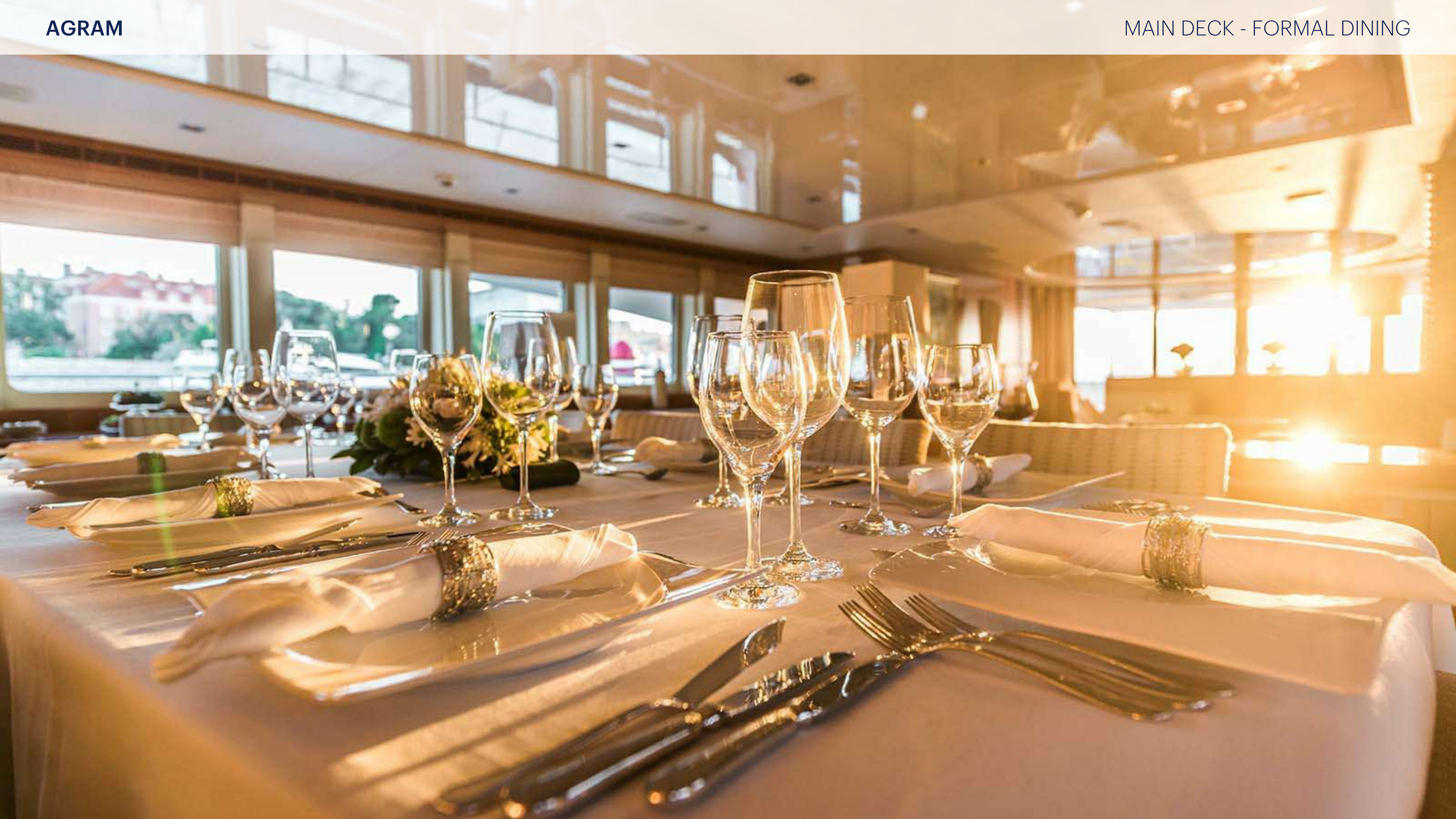


























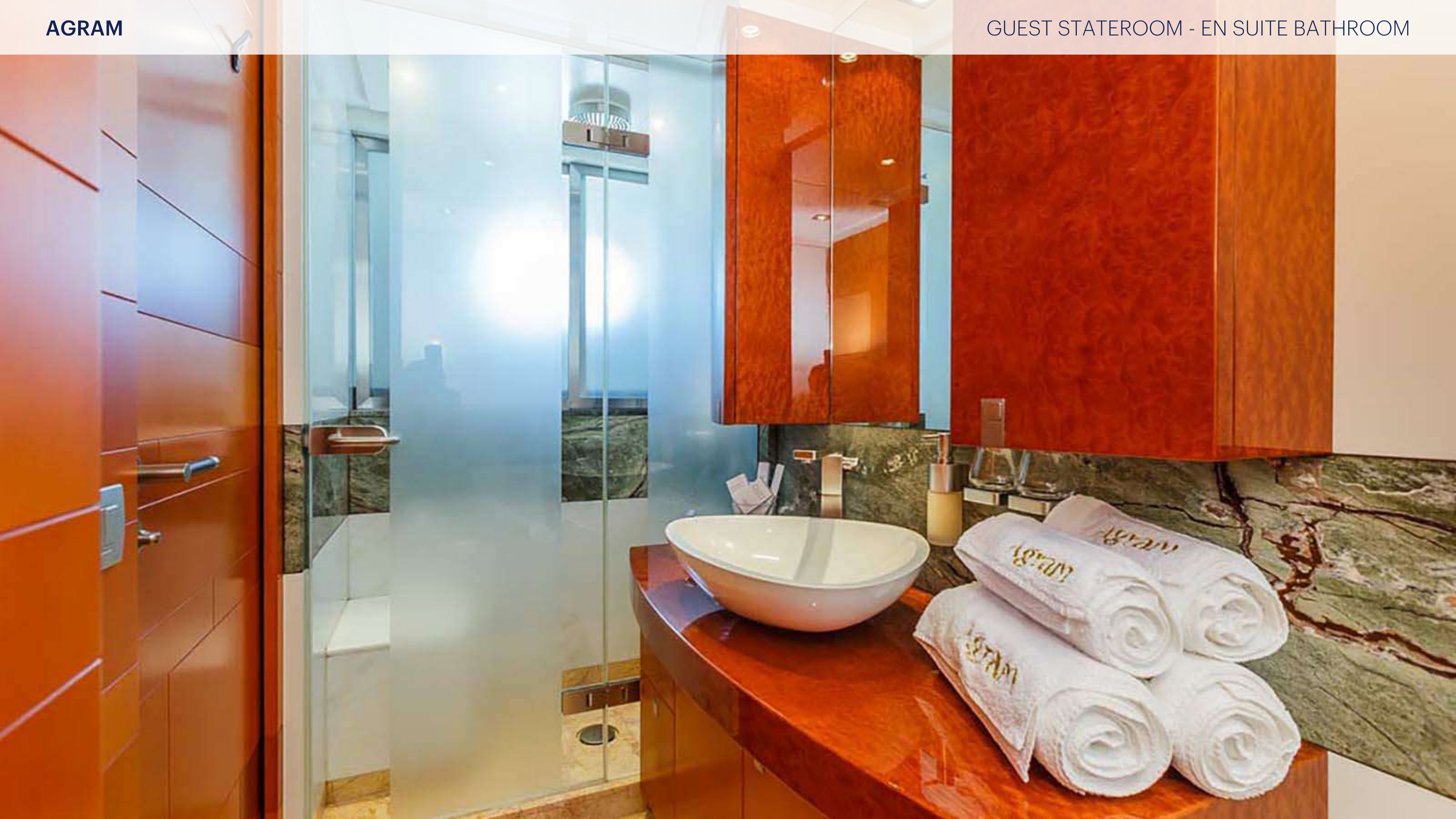






























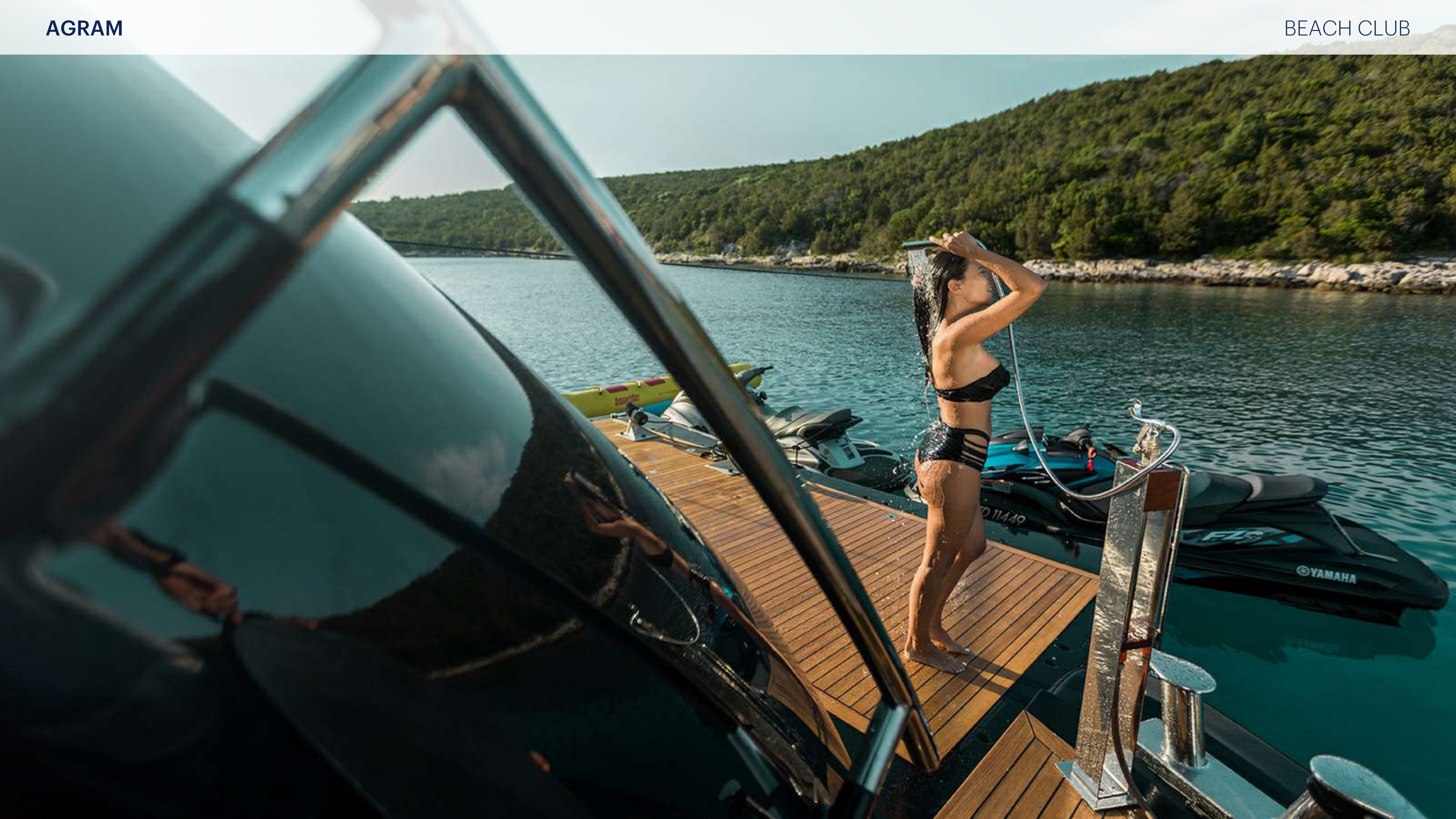


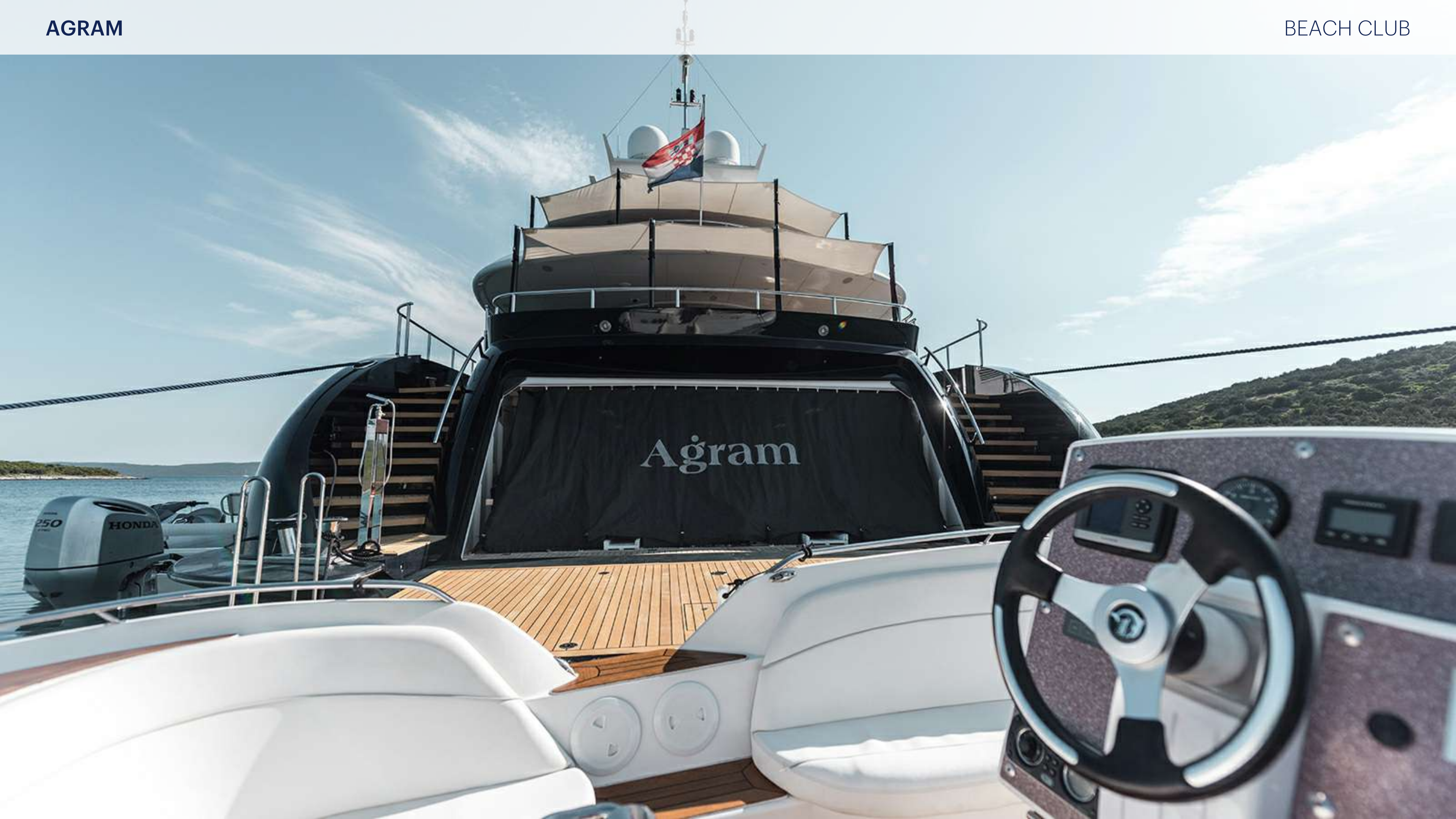














AGRAM

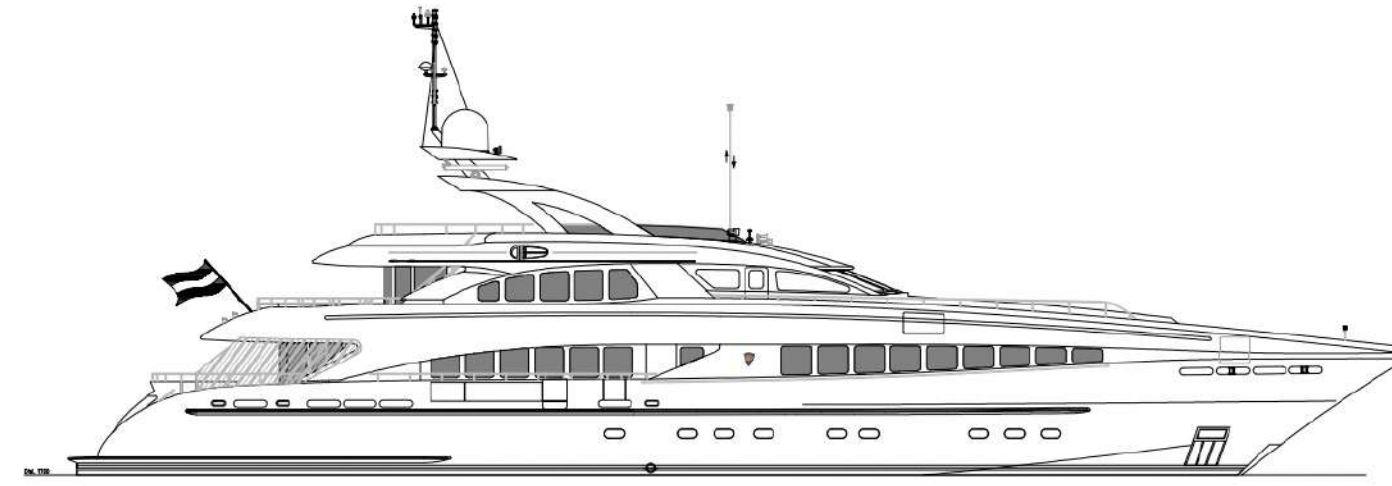
AERIAL



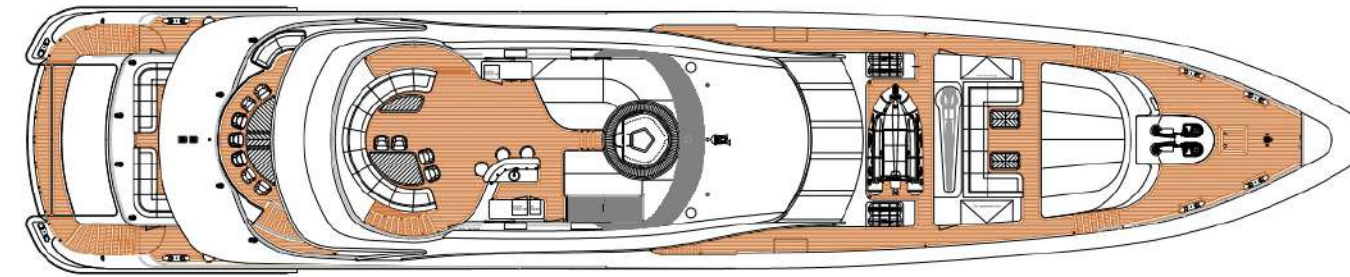
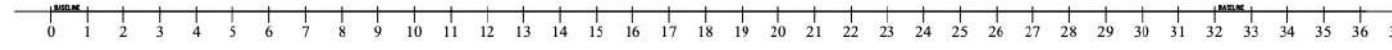




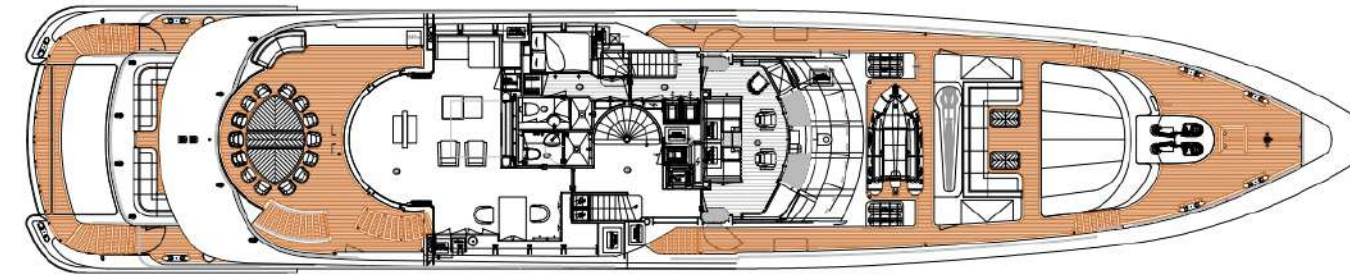
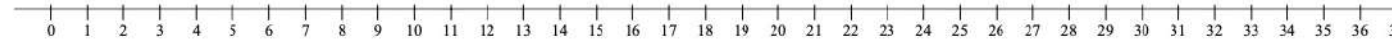




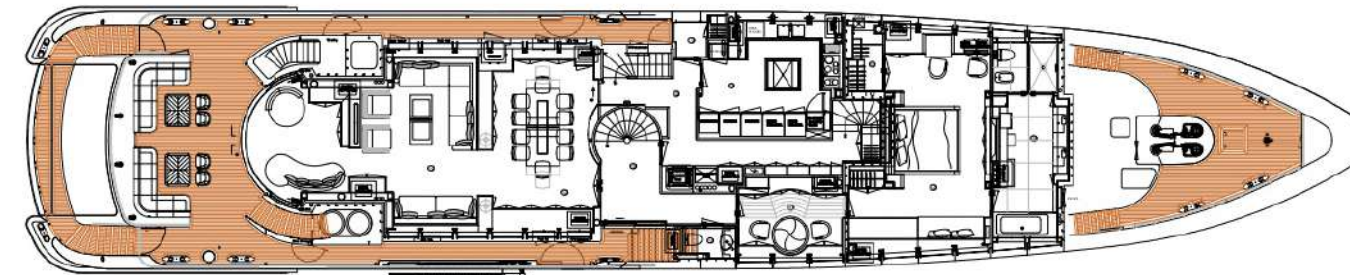
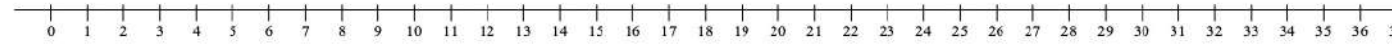
PROFILE



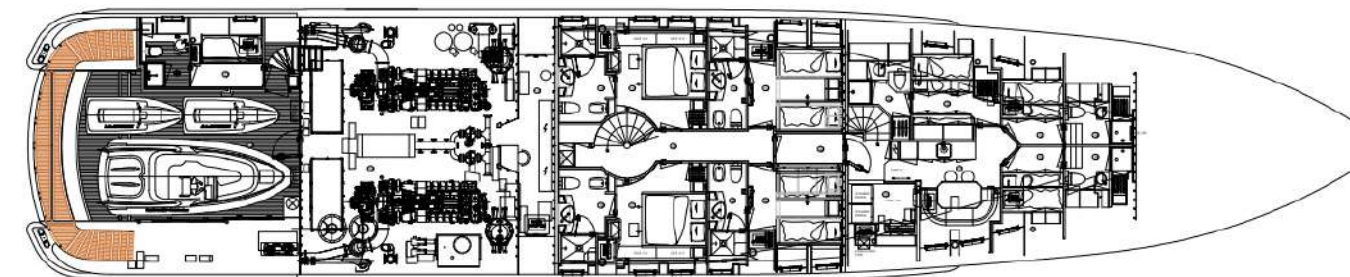
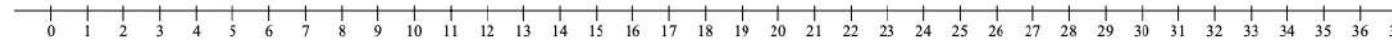
SUNDECK



WHEELHOUSE
DECK



MAINDECK



LOWERDECK

