

A+

34m (111.7ft) | BENETTI OASIS | 2024





The Creek

A+



SUN DECK



SUN DECK



SUN DECK



SUN DECK



SUN DECK



SUN DECK



SUN DECK



BRIDGE DECK



BRIDGE DECK



SKY LOUNGE



SKY LOUNGE



SKY LOUNGE



MAIN DECK AFT (EXAMPLE)



MAIN DECK AFT (EXAMPLE)




MAIN DECK AFT (EXAMPLE)



MAIN DECK AFT (EXAMPLE)



MAIN SALON

A modern interior bar area featuring a light wood bar counter with a vertical ribbed texture. Behind the counter is a wall of light wood with a grid of shelves. The shelves hold various items: a bottle with a red cap, a white thermos, a dark bottle, and several glasses. The background wall has a light, textured pattern. The floor is light wood, and the ceiling has recessed lighting.

MAIN SALON



MAIN SALON & DINING



MAIN DINING

The image shows a minimalist interior space, likely a main deck foyer. The walls and ceiling are finished with light-colored wood paneling. On the left, a staircase with grey carpeting leads upwards. In the center, a curved wooden table with a light-colored top and a dark border stands on a light wood floor. The background features a wall with three doors, each with a small handle. The ceiling is equipped with several recessed spotlights, providing warm illumination. The overall design is clean and modern, with a focus on natural wood textures and simple geometric forms.

MAIN DECK FOYER



MAIN DECK FULL BEAM MASTER



MAIN DECK FULL BEAM MASTER




MASTER EN SUITE



MASTER EN SUITE



MASTER EN SUITE




LOWER DECK LOBBY



VIP GUEST CABIN - QUEEN



VIP GUEST CABIN - QUEEN



VIP GUEST CABIN - EN SUITE



GUEST CABIN - STARBOARD - QUEEN



GUEST CABIN - PORTSIDE - TWIN & 2 PULLMANS



GUEST CABIN - PORTSIDE - TWIN & 2 PULLMANS



11.43m SKIPPER-BSK 38NC WITH TWIN 500HP



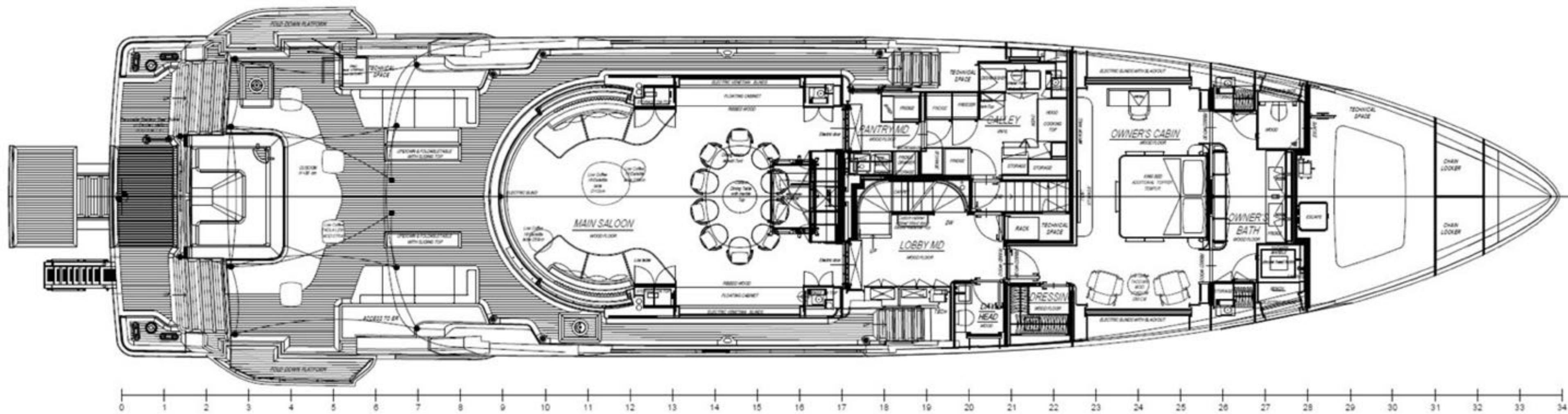
11.43m SKIPPER-BSK 38NC WITH TWIN 500HP



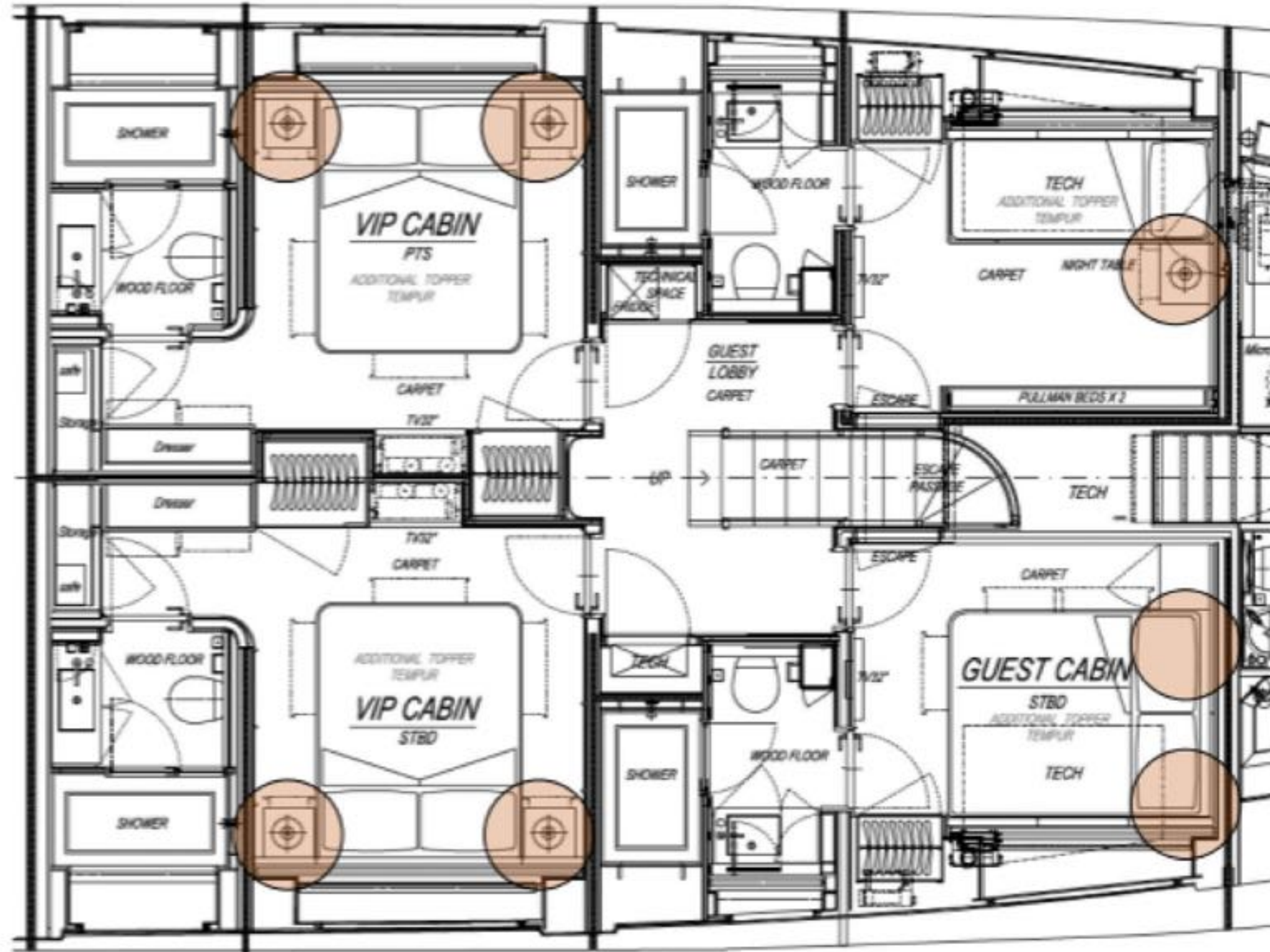
11.43m SKIPPER-BSK 38NC WITH TWIN 500HP



11.43m SKIPPER-BSK 38NC WITH TWIN 500HP



MAIN DECK LAYOUT



LOWER DECK CABIN LAYOUT

SPECIFICATIONS

DIMENSIONS

Length: 34m (111'7")

Beam: 7.9m (25' 11")

Draft: 2m (6'7")

GENERAL & TECHNICAL

Year: 2024

Builder: Benetti Oasis

Hull Construction: Composite

Hull Configuration: Displacement

Gross Tons: 265

Cruising speed: 10 knots

Max Speed: 16 knots

CERTIFICATIONS

Flag: Cayman Islands

Port of Registry: The Creek

ACCOMMODATION

Total Crew: 7

Total Guests: 11

Total Cabins: 5 (4 Double, 1 Twin)

Bed Configuration: 1 King, 3 Queen,
1 Twin, 2 Pullmans

TENDERS

11.53m Skipper-BSK 38NC with twin 500hp

5.03m Williams Dieseljet 505

SPECIAL FEATURES

- Exclusive sea terrace - the fold-out wings expand the sunbathing area over the water to offer impressive 270-degree views
- With only five steps separating guests from the water, access to the sea is further facilitated through a mobile Sea Lift, which can also be used as a diving springboard and as a jet ski hauling system
- Luxurious infinity pool integrated into the center of the main deck
- Open-plan design avoiding divisions between the interior and the exterior in favor of a seamless connection between the environments
- Large dining area on Sun Deck with a voluminous pantry sheltered by a carbon fiber hardtop
- Gym equipment to include spin bike, treadmill, and free weights
- Main deck full-beam master stateroom with king bed
- 2 VIP guest staterooms with queen beds on the lower deck
- 1 guest stateroom with queen bed and 1 guest stateroom with twin bed and 2 pullmans on the lower deck