

A+

34m (111.7ft) | BENETTI OASIS | 2024





MAIN DECK AFT



MAIN DECK AFT



MAIN DECK AFT



MAIN SALON



MAIN SALON



MAIN SALON



MAIN SALON



MAIN SALON





MAIN DINING



MAIN DINING



GALLEY

MAIN DECK FOYER





MAIN DECK FULL BEAM MASTER



MAIN DECK FULL BEAM MASTER



MAIN DECK FULL BEAM MASTER



MASTER ENSUITE



MASTER ENSUITE



LOWER DECK LOBBY



VIP GUEST CABIN - QUEEN



VIP GUEST CABIN - QUEEN



VIP GUEST CABIN - ENSUITE



GUEST CABIN - PORTSIDE - TWIN & 2 PULLMANS



BRIDGE DECK



BRIDGE DECK



SKY LOUNGE



SKY LOUNGE



SKY LOUNGE



BOW LOUNGE



BOW LOUNGE



BOW LOUNGE



SUN DECK



SUN DECK



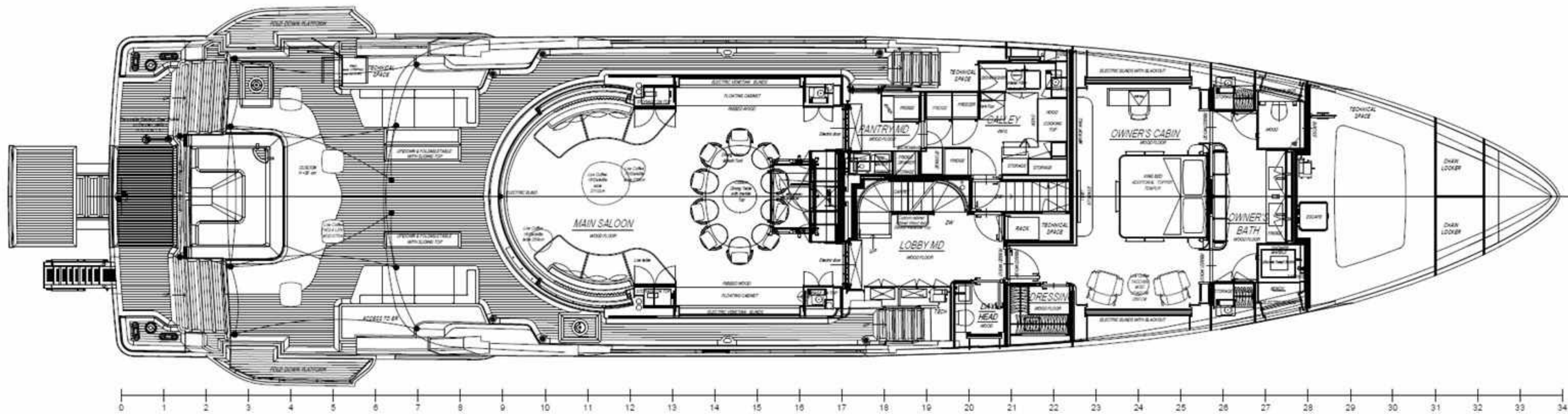
SUN DECK



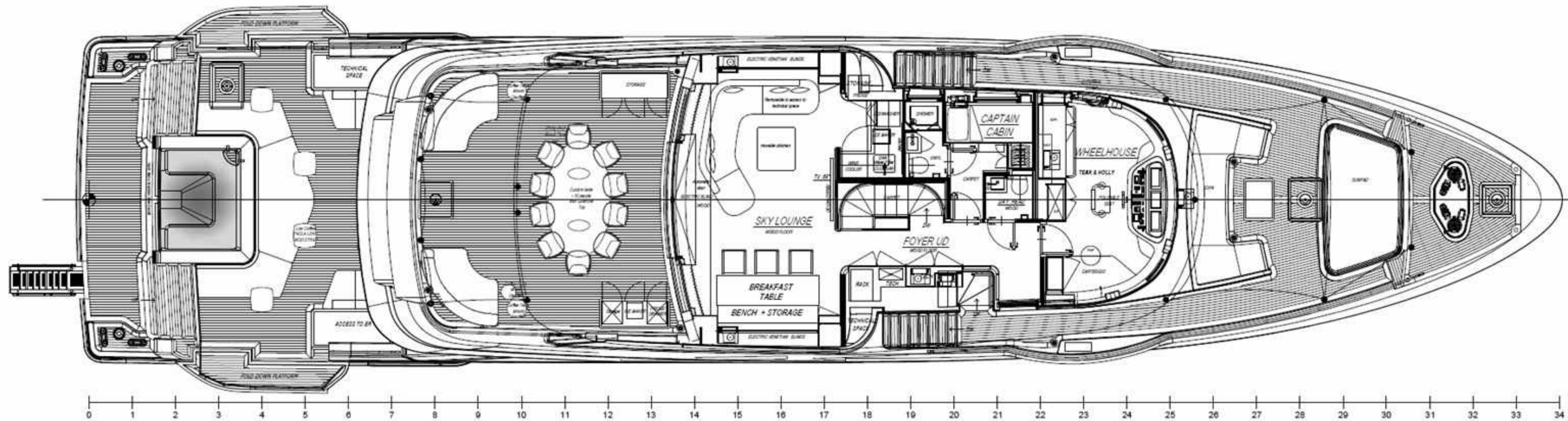
SUN DECK



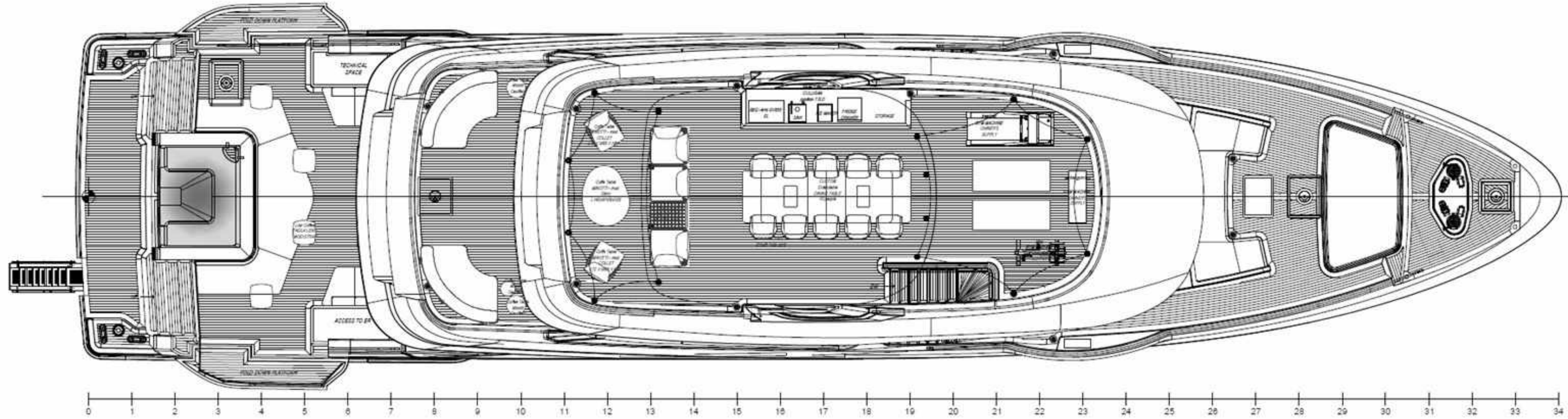
TENDER



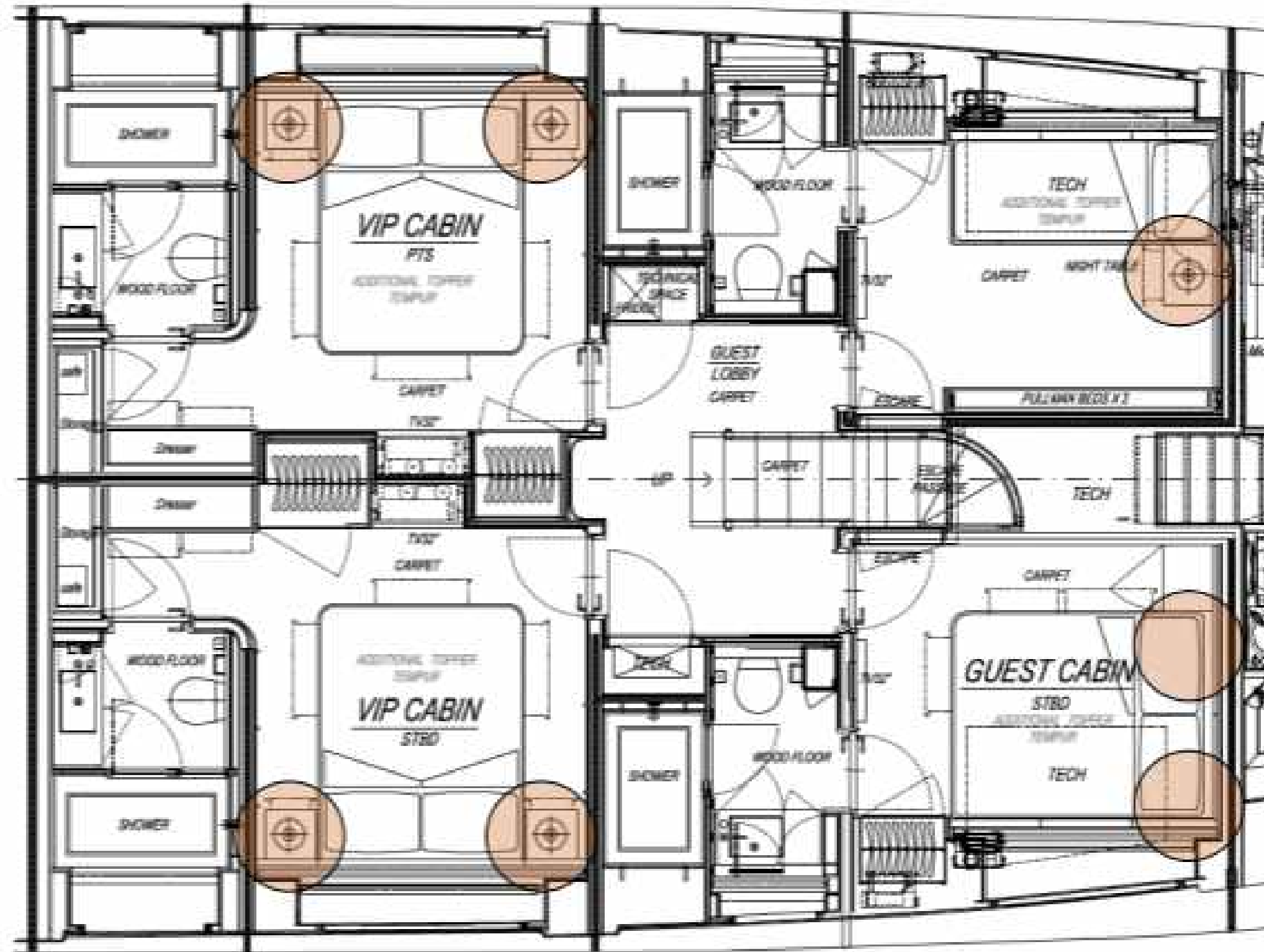
GENERAL ARRANGEMENT - MAIN DECK



GENERAL ARRANGEMENT - BRIDGE DECK



GENERAL ARRANGEMENT - SUN DECK



GENERAL ARRANGEMENT - CABIN CONFIGURATION

SPECIFICATIONS

DIMENSIONS

Length: 34m (111'7")

Beam: 7.9m (25' 11")

Draft: 2m (6'7")

GENERAL & TECHNICAL

Year: 2024

Builder: Benetti Oasis

Hull Construction: Composite

Hull Configuration: Displacement

Gross Tons: 265

Cruising speed: 10 knots

Max Speed: 16 knots

CERTIFICATIONS

Flag: Cayman Islands

Port of Registry: The Creek

ACCOMMODATION

Total Crew: 7

Total Guests: 11

Total Cabins: 5 (4 Double, 1 Twin)

Bed Configuration: 1 King, 3 Queen,
1 Twin, 2 Pullmans

TENDERS

11.53m Skipper-BSK38NC with twin 50hp engines

5.03m Williams Dieseljet 505

2 x seabobs

Wakeboard

2 x Inflatable stand up paddle board

Inflatable kayak

Inflatable donut

Floating dock

2 x plush bikes

Snorkelling equipment

1 x "pool"

SPECIAL FEATURES

- Exclusive sea terrace - the fold-out wings expand the sunbathing area over the water to offer impressive 270-degree views
- With only five steps separating guests from the water, access to the sea is further facilitated through a mobile Sea Lift, which can also be used as a diving springboard and as a jet ski hauling system
- Luxurious infinity pool integrated into the center of the main deck
- Open-plan design avoiding divisions between the interior and the exterior in favor of a seamless connection between the environments
- Large dining area on Sun Deck with a voluminous pantry sheltered by a carbon fiber hardtop
- Gym equipment to include spin bike, treadmill, and free weights
- Main deck full-beam master stateroom with king bed
- 2 VIP guest staterooms with queen beds on the lower deck
- 1 guest stateroom with queen bed and 1 guest stateroom with twin bed and 2 pullmans on the lower deck

