



FOR CHARTER
I NOVA

50M (163') | COSMO EXPLORER | 2013



OVERVIEW

BUILDER	COSMO EXPLORER
BUILT	2013
LOA	49.75M / 163'3"
DRAFT	3.50M / 11'6"
BEAM	9.50M / 31'2"
STATEROOMS	6
GUESTS	12
STATEROOM CONFIGURATION	4 DOUBLE, 2 TWIN
CREW	12
SPEED	12.5 KNOTS / 15 MAX

CRUISING AREA SUMMER	EASTERN MEDITERRANEAN
CRUISING AREA WINTER	PLEASE INQUIRE



KEY FEATURES

- A commanding 50m explorer yacht with an exceptional 748 GT, offering volume more commonly found on much larger yachts
- True full-displacement, ocean-going build, designed for long-range cruising and global exploration
- Exterior and interior design by Cristiano Gatto, with a strong, instantly recognizable design pedigree
- First time on the charter market, led by a seasoned and charter-savvy Captain
- A striking elongated upper deck and dedicated tender deck, purpose-designed to carry multiple tenders and a full collection of water toys
- A rare wellness offering for an explorer yacht, including a jacuzzi, fully equipped gym, and sauna
- Generous accommodation for 12 guests in six beautifully appointed suites, ensuring space, comfort, and privacy
- A remarkable split-level Owner's apartment with private salon and study—creating a true “yacht-within-a-yacht” experience
- Built with outstanding materials and craftsmanship throughout, combining modern design with warmth, depth, and exceptional build quality









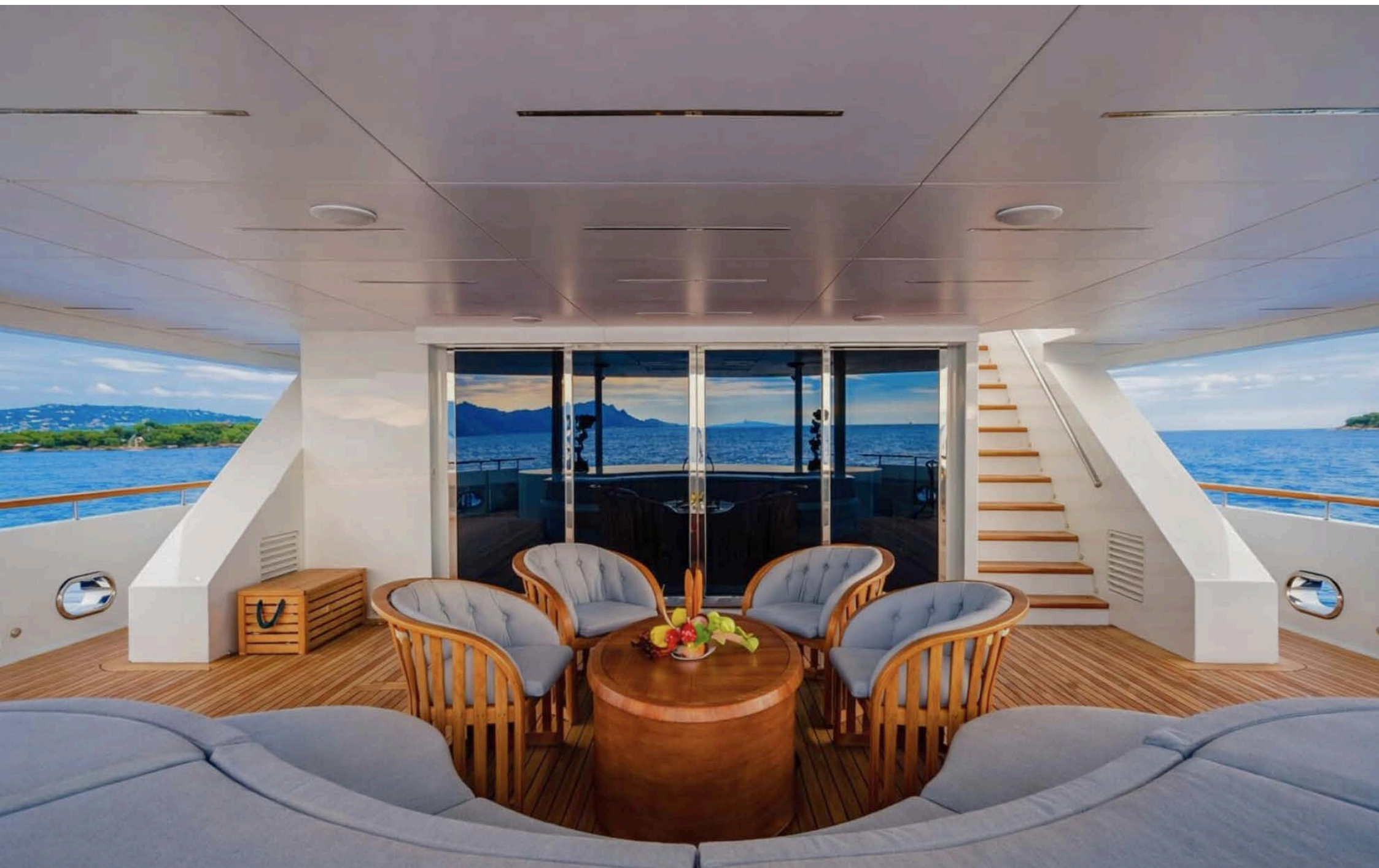


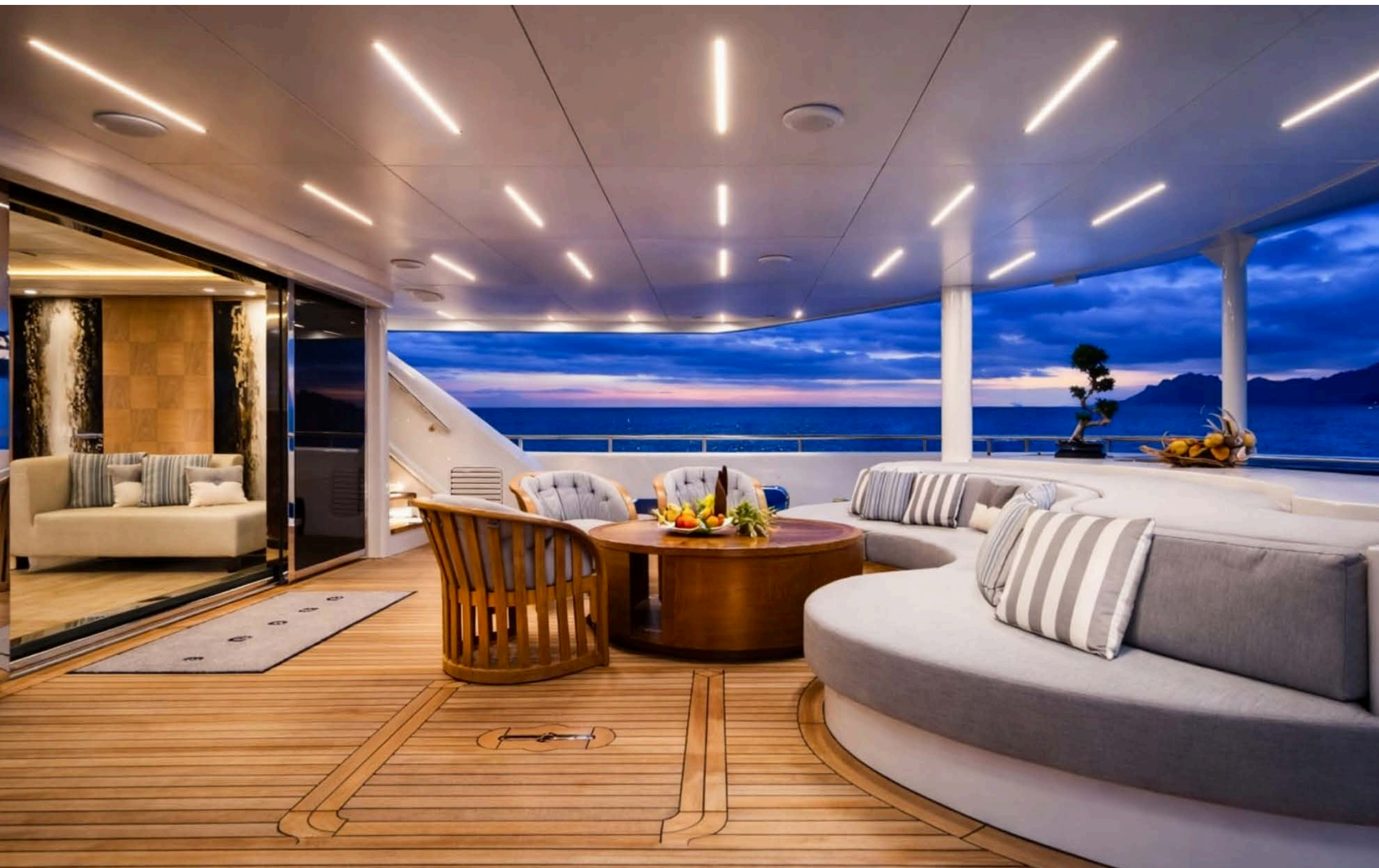








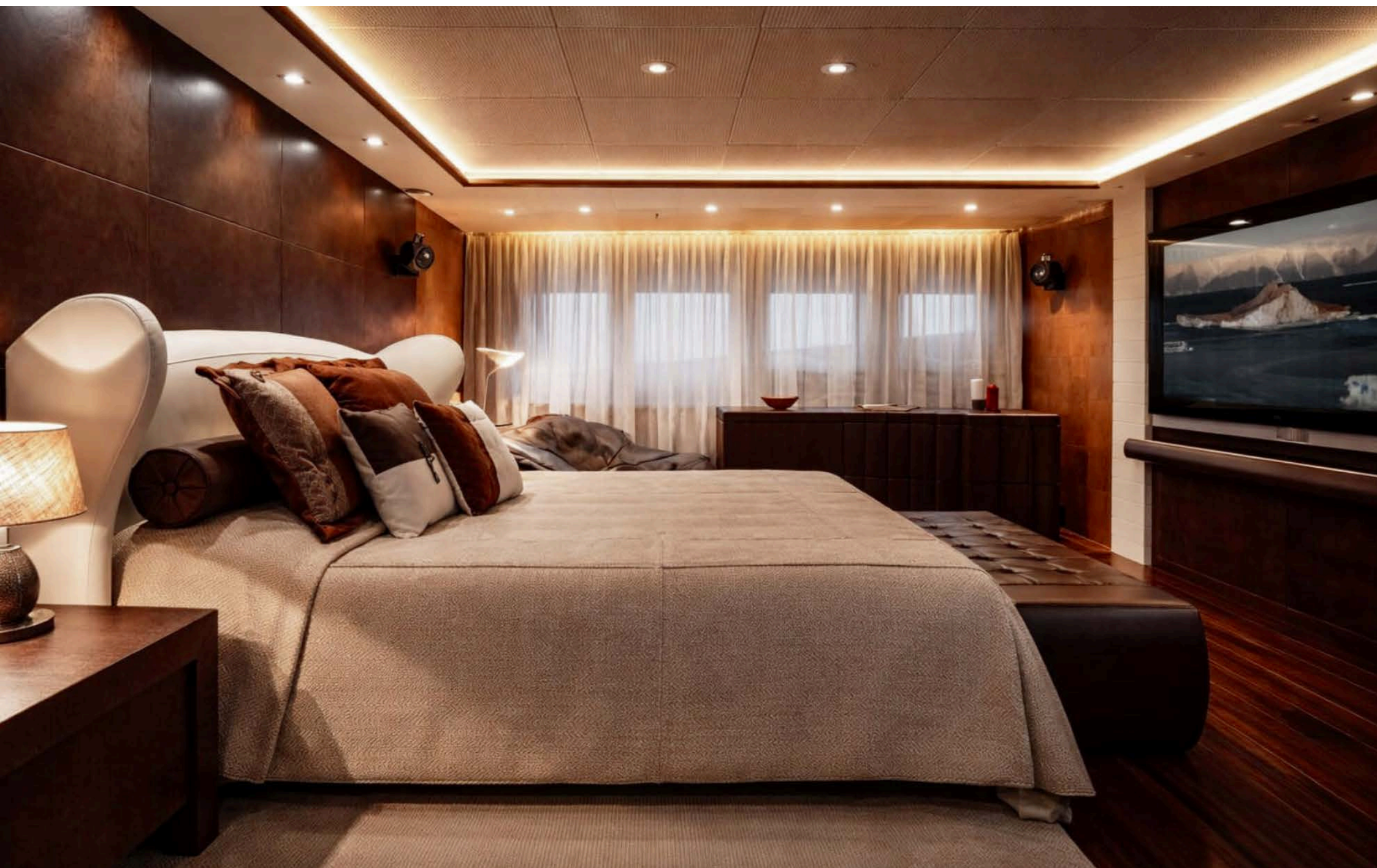






















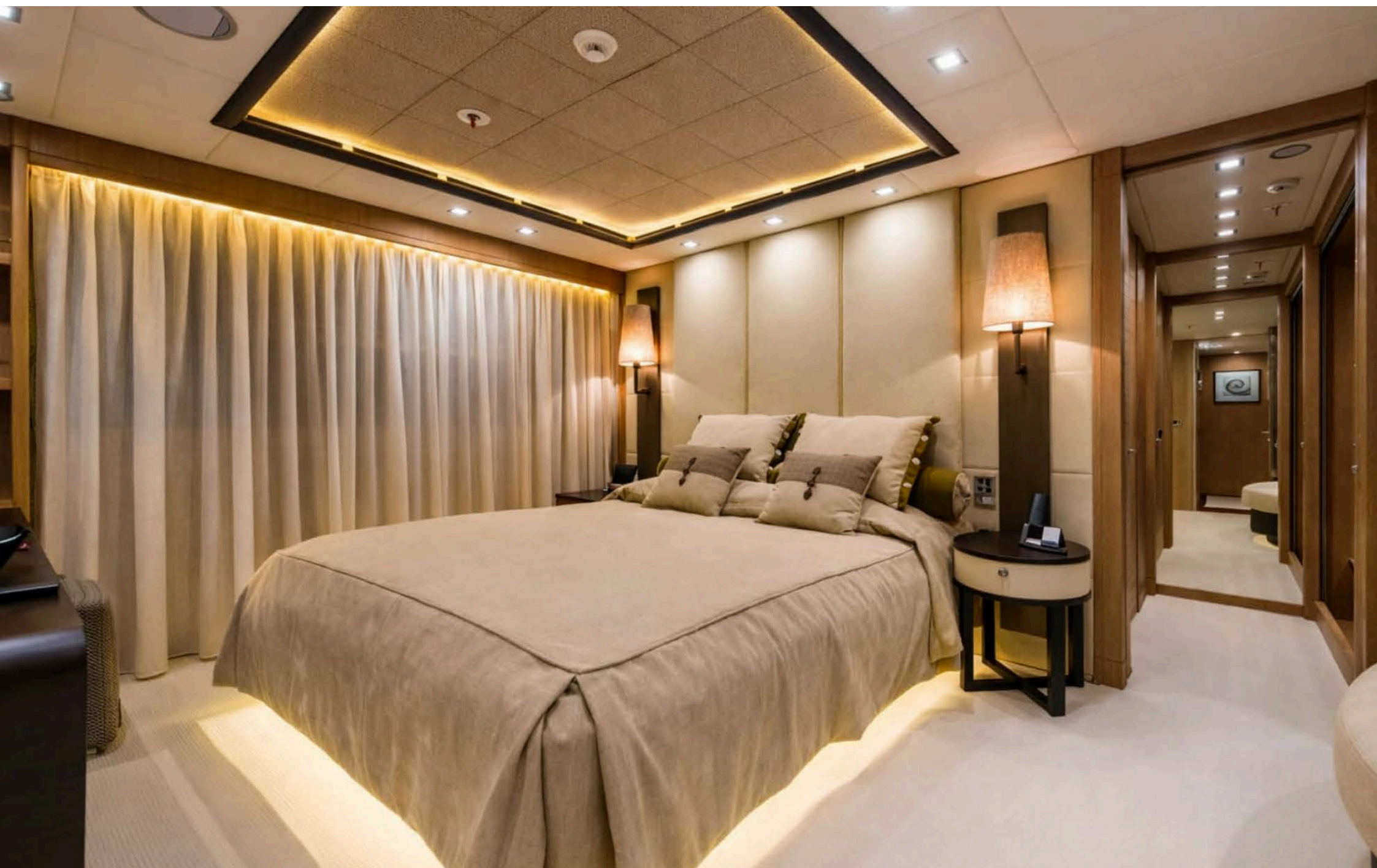


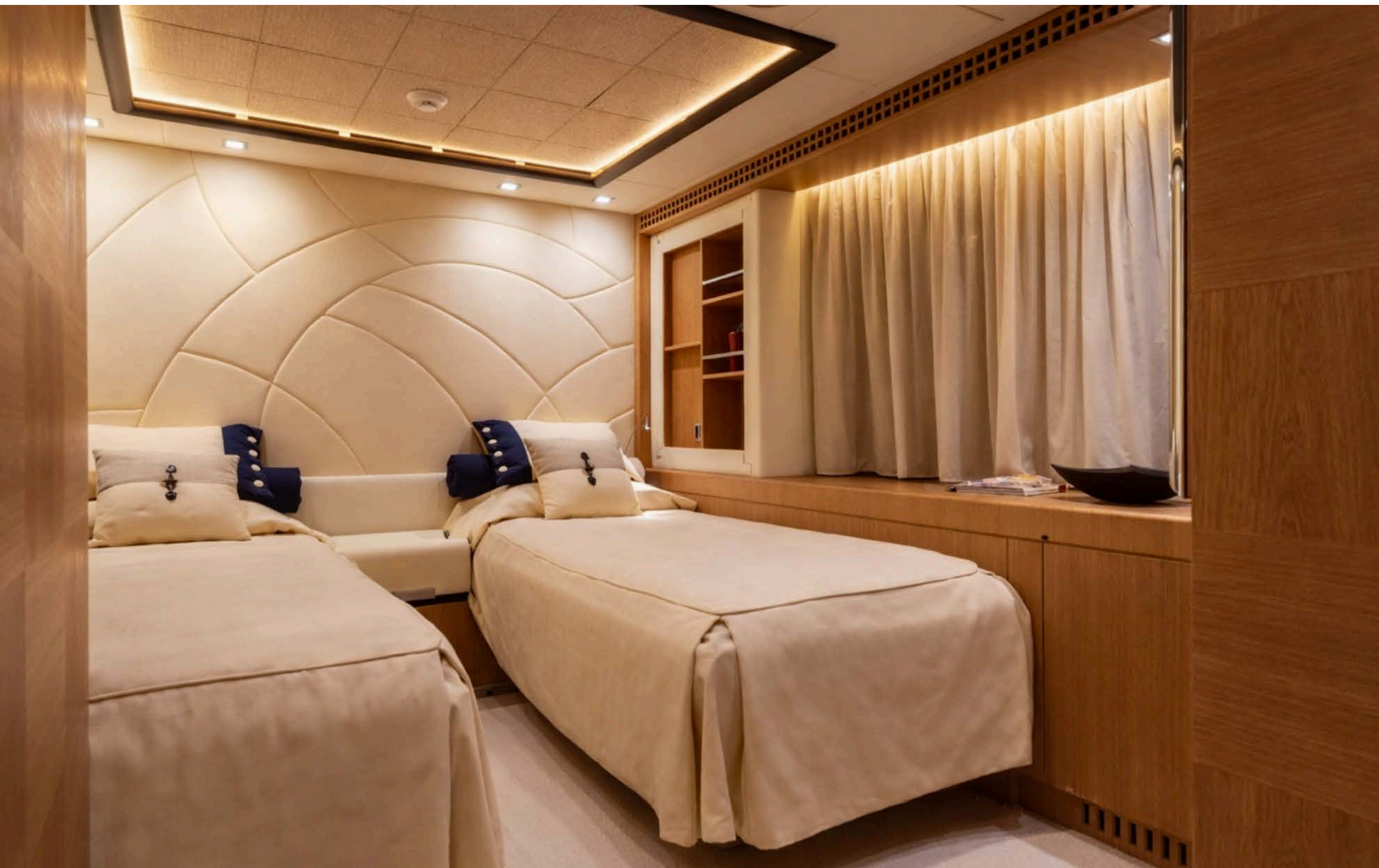




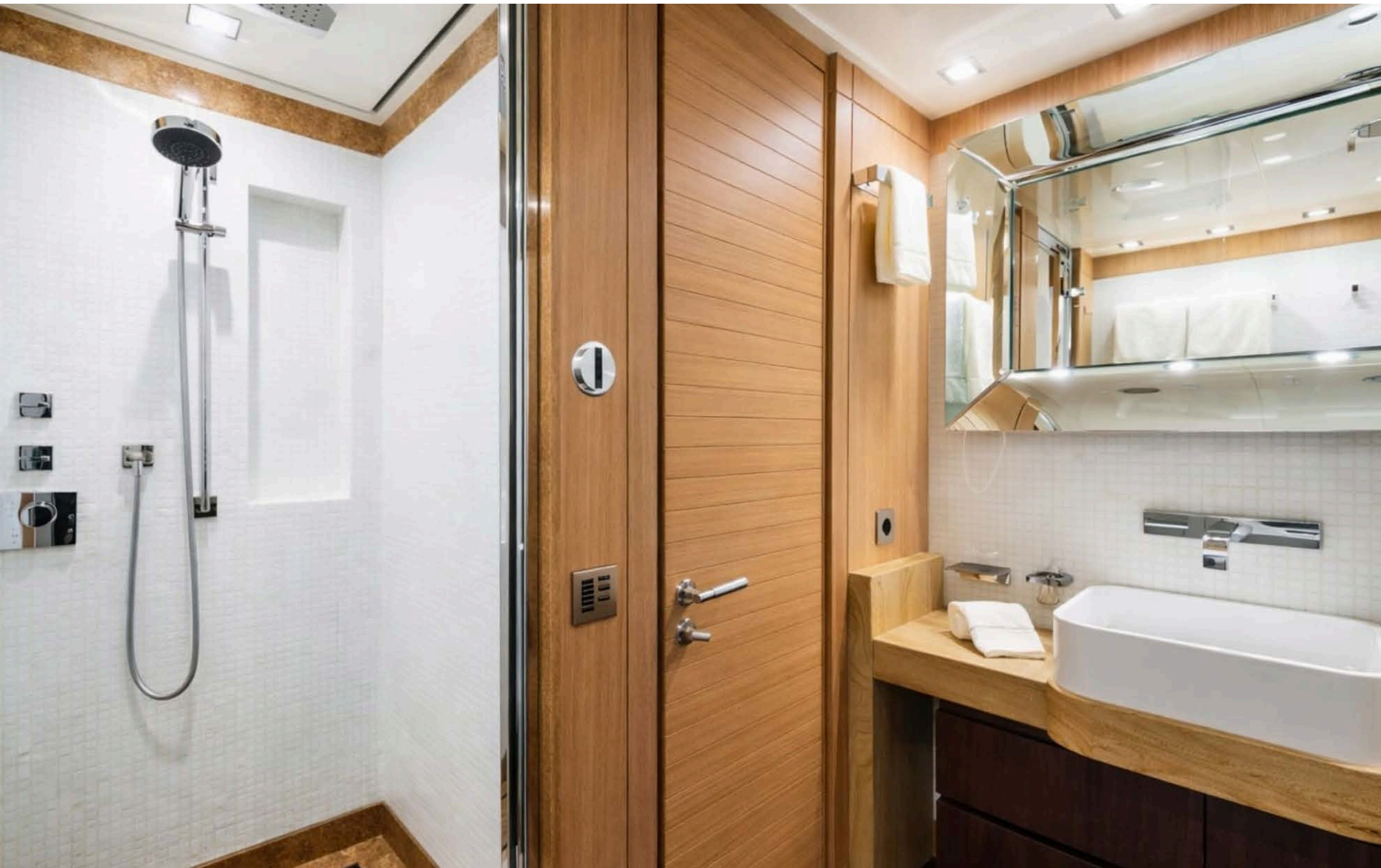


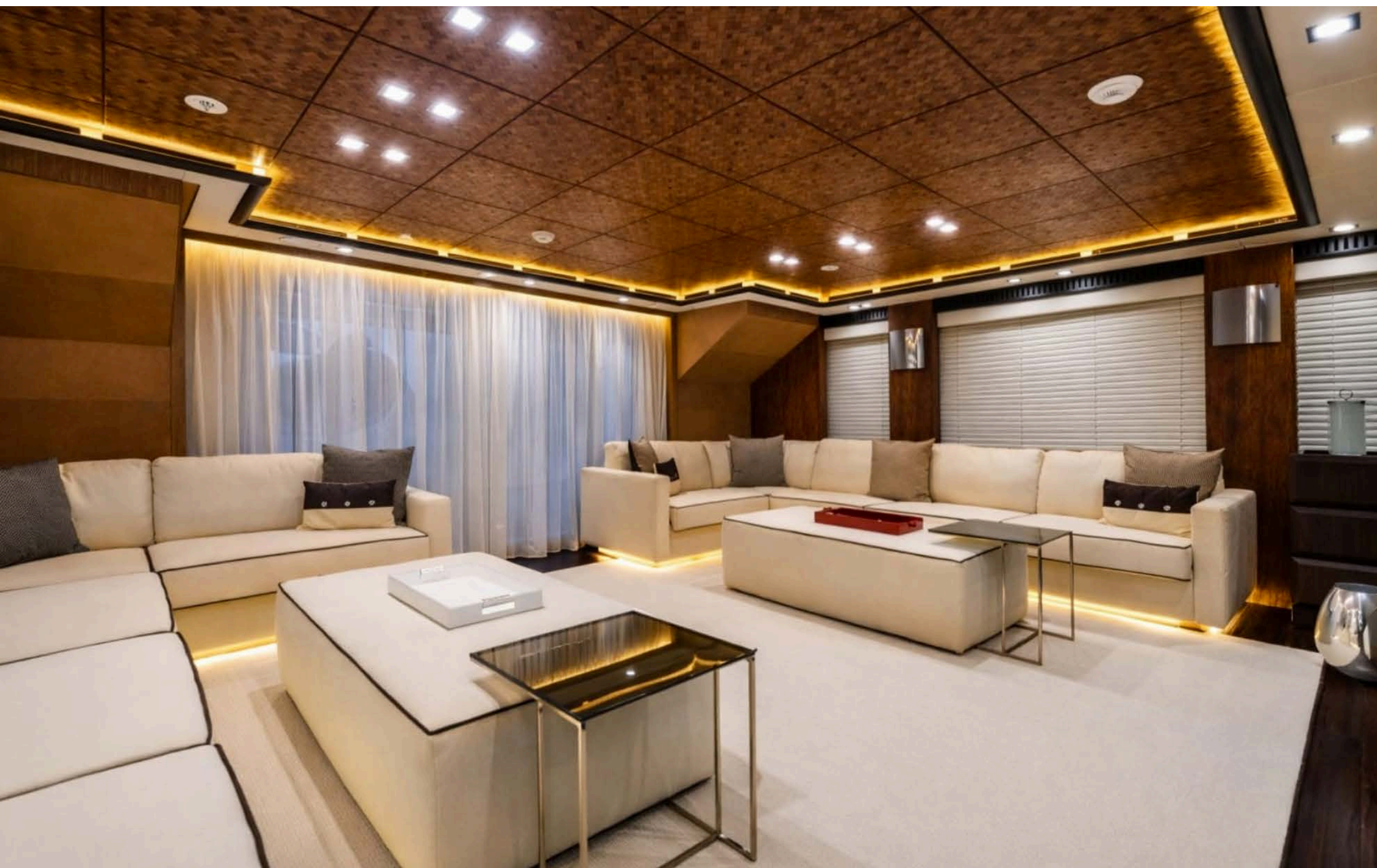


















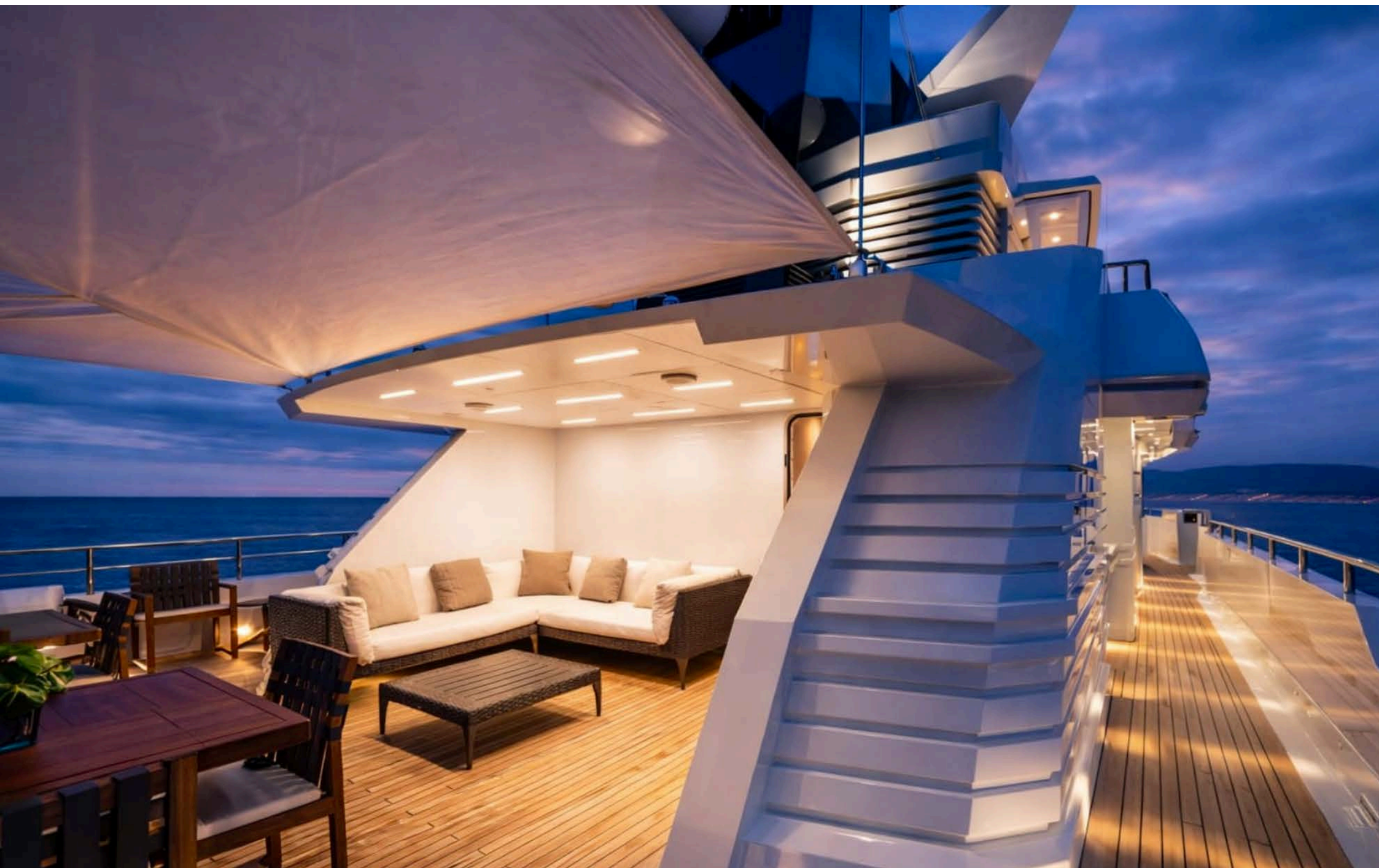






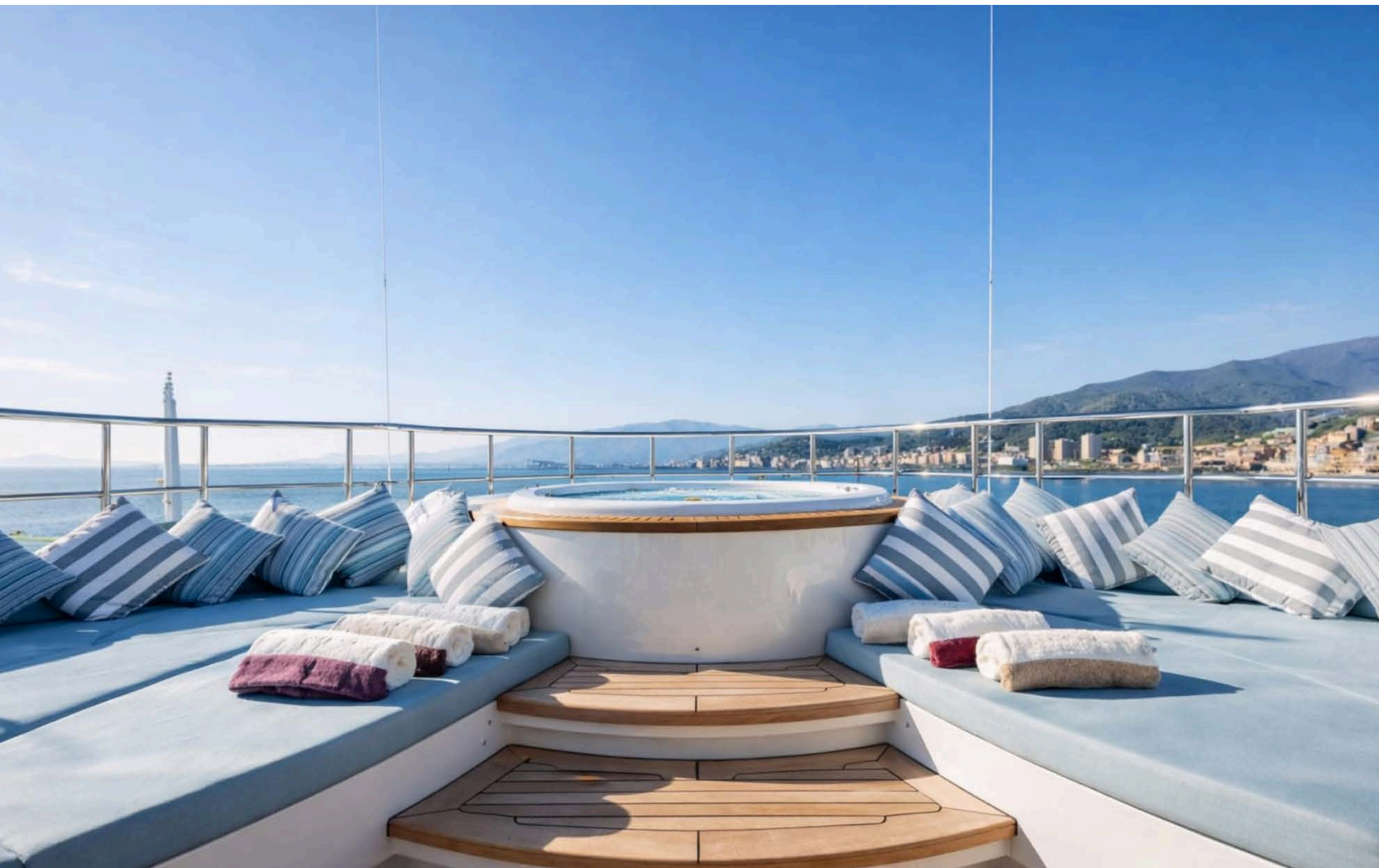




















TENDERS & TOYS

BUZZI 34 FT WITH 2 OUTBOARD 350 MERCURY

SCORPION 850 WITH INBOARD MERCURY

RESCUE BOAT 4M 25 HP OUTBOARD ENGINE

2 X JET SKI SEA DOO

1 X RXT X 325

2 X SEABOBS

2 X INFLATABLE SUP

2 X INFLATABLE KAYAK

1 X E FOIL

SNORKELING EQUIPMENT

FISHING EQUIPMENT

2 X MOUNTAIN E BIKES

INFLATABLE TOWABLE TOYS

SKIS

WAKEBOARD

KNEEBOARD



